

SESN2 Antibody (monoclonal) (M03)

Mouse monoclonal antibody raised against a full length recombinant SESN2.

Catalog # AT3830a

Product Information

Application	WB, IHC, IF, IP, E
Primary Accession	P58004
Other Accession	BC013304
Reactivity	Human
Host	mouse
Clonality	monoclonal
Isotype	IgG2a Kappa
Clone Names	3B8
Calculated MW	54494

Additional Information

Gene ID	83667
Other Names	Sestrin-2, Hi95, SESN2, SEST2
Target/Specificity	SESN2 (AAH13304.1, 1 a.a. ~ 480 a.a) full-length recombinant protein with GST tag. MW of the GST tag alone is 26 KDa.
Dilution	WB~~1:500~1000 IHC~~1:100~500 IF~~1:50~200 IP~~N/A E~~N/A
Format	Clear, colorless solution in phosphate buffered saline, pH 7.2 .
Storage	Store at -20°C or lower. Aliquot to avoid repeated freezing and thawing.
Precautions	SESN2 Antibody (monoclonal) (M03) is for research use only and not for use in diagnostic or therapeutic procedures.

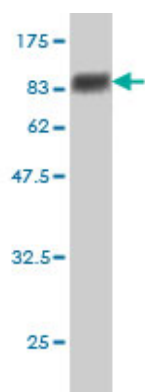
Background

This gene encodes a member of the sestrin family of PA26-related proteins. The encoded protein may function in the regulation of cell growth and survival. This protein may be involved in cellular response to different stress conditions.

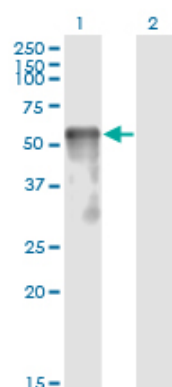
References

- 1.The Inhibition of Autophagy Sensitises Colon Cancer Cells with Wild-Type p53 but Not Mutant p53 to Topotecan Treatment.Li DD, Sun T, Wu XQ, Chen SP, Deng R, Jiang S, Feng GK, Pan JX, Zhang XS, Zeng YX, Zhu XF.PLoS One. 2012;7(9):e45058. Epub 2012 Sep 14.
- 2.Association of platelet-derived growth factor receptor accumulation with increased oxidative stress and cellular injury in sestrin 2 silenced human glioblastoma

Images

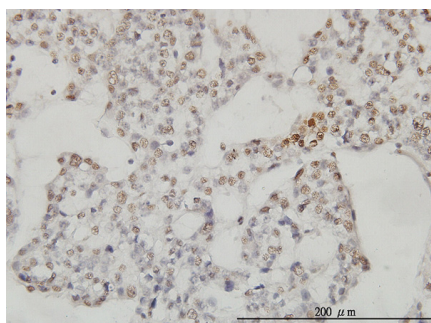


Antibody Reactive Against Recombinant Protein. Western Blot detection against Immunogen (78.54 KDa) .

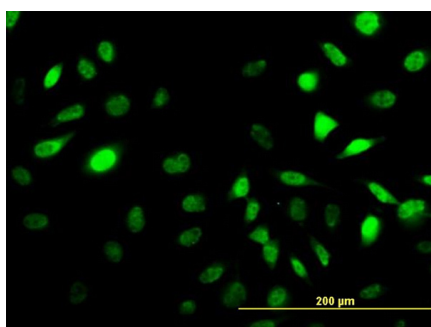


Western Blot analysis of SESN2 expression in transfected 293T cell line by SESN2 monoclonal antibody (M03), clone 3B8.

Lane 1: SESN2 transfected lysate(54.5 KDa).
Lane 2: Non-transfected lysate.

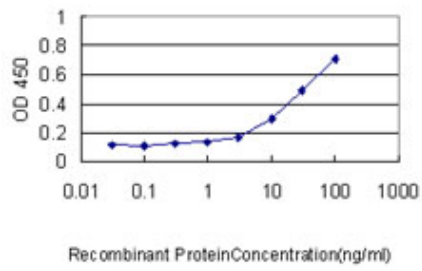
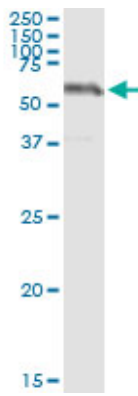


Immunoperoxidase of monoclonal antibody to SESN2 on formalin-fixed paraffin-embedded human ovary, clear cell carcinoma. [antibody concentration 3 ug/ml]



Immunofluorescence of monoclonal antibody to SESN2 on HeLa cell. [antibody concentration 10 ug/ml]

Immunoprecipitation of SESN2 transfected lysate using anti-SESN2 monoclonal antibody and Protein A Magnetic Bead ([U0007](#)), and immunoblotted with SESN2 MaxPab rabbit polyclonal antibody.



Detection limit for recombinant GST tagged SESN2 is approximately 0.3ng/ml as a capture antibody.

Please note: All products are 'FOR RESEARCH USE ONLY. NOT FOR USE IN DIAGNOSTIC OR THERAPEUTIC PROCEDURES'.