

SET Antibody (monoclonal) (M01)

Mouse monoclonal antibody raised against a full length recombinant SET.

Catalog # AT3831a

Product Information

Application	WB, IF, E
Primary Accession	Q01105
Other Accession	BC032749
Reactivity	Human
Host	mouse
Clonality	monoclonal
Isotype	IgG1 Kappa
Clone Names	M1-F5
Calculated MW	33489

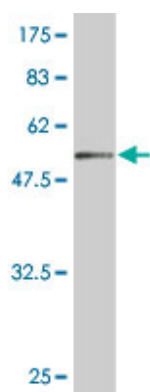
Additional Information

Gene ID	6418
Other Names	Protein SET, HLA-DR-associated protein II, Inhibitor of granzyme A-activated DNase, IGAAD, PHAPII, Phosphatase 2A inhibitor I2PP2A, I-2PP2A, Template-activating factor I, TAF-I, SET
Target/Specificity	SET (AAH32749.1, 1 a.a. ~ 277 a.a) full-length recombinant protein with GST tag. MW of the GST tag alone is 26 KDa.
Dilution	WB~~1:500~1000 IF~~1:50~200 E~~N/A
Format	Clear, colorless solution in phosphate buffered saline, pH 7.2 .
Storage	Store at -20°C or lower. Aliquot to avoid repeated freezing and thawing.
Precautions	SET Antibody (monoclonal) (M01) is for research use only and not for use in diagnostic or therapeutic procedures.

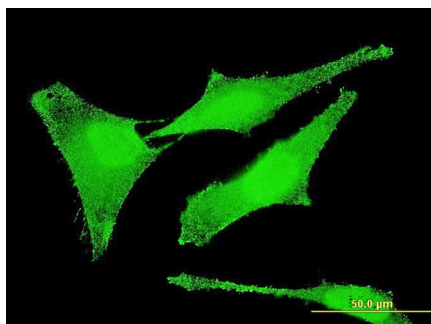
References

Maternal genes and facial clefts in offspring: a comprehensive search for genetic associations in two population-based cleft studies from Scandinavia. Jugessur A, et al. PLoS One, 2010 Jul 9. PMID 20634891. Decreased expression of microRNA-199b increases protein levels of SET (protein phosphatase 2A inhibitor) in human choriocarcinoma. Chao A, et al. Cancer Lett, 2010 May 1. PMID 19900756. Defining the human deubiquitinating enzyme interaction landscape. Sowa ME, et al. Cell, 2009 Jul 23. PMID 19615732. FE65 binds Teashirt, inhibiting expression of the primate-specific caspase-4. Kajiwar Y, et al. PLoS One, 2009. PMID 19343227. Jak2 inhibition deactivates Lyn kinase through the SET-PP2A-SHP1 pathway, causing apoptosis in drug-resistant cells from chronic myelogenous leukemia patients. Samanta AK, et al.

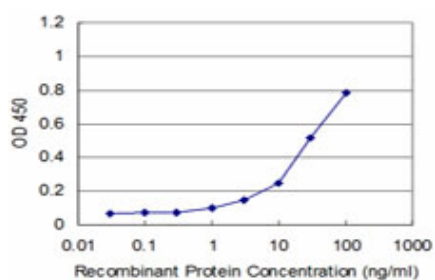
Images



Antibody Reactive Against Recombinant Protein. Western Blot detection against Immunogen (56.21 KDa) .



Immunofluorescence of monoclonal antibody to SET on HeLa cell . [antibody concentration 10 ug/ml]



Detection limit for recombinant GST tagged SET is approximately 3ng/ml as a capture antibody.

Please note: All products are 'FOR RESEARCH USE ONLY. NOT FOR USE IN DIAGNOSTIC OR THERAPEUTIC PROCEDURES'.