

SFN Antibody (monoclonal) (M01)

Mouse monoclonal antibody raised against a full length recombinant SFN.

Catalog # AT3840a

Product Information

Application	WB, IHC, IP
Primary Accession	P31947
Other Accession	BC000329
Reactivity	Human
Host	Mouse
Clonality	monoclonal
Isotype	IgG1 kappa
Clone Names	3C3
Calculated MW	27774

Additional Information

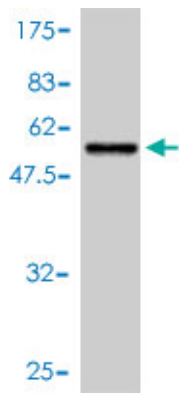
Gene ID	2810
Other Names	14-3-3 protein sigma, Epithelial cell marker protein 1, Stratifin, SFN, HME1
Target/Specificity	SFN (AAH00329.1, 1 a.a. ~ 248 a.a) full-length recombinant protein with GST tag. MW of the GST tag alone is 26 KDa.
Dilution	WB~~1:500~1000 IHC~~1:100~500 IP~~N/A
Format	Clear, colorless solution in phosphate buffered saline, pH 7.2 .
Storage	Store at -20°C or lower. Aliquot to avoid repeated freezing and thawing.
Precautions	SFN Antibody (monoclonal) (M01) is for research use only and not for use in diagnostic or therapeutic procedures.

References

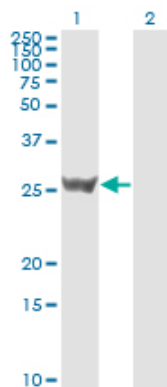
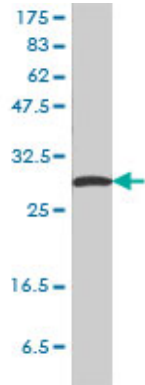
1.An inverse switch in DNA base excision and strand break repair contributes to melphalan resistance in multiple myeloma cells.Sousa MM, Zub KA, Aas PA, Hanssen-Bauer A, Demirovic A, Sarno A, Tian E, Liabakk NB, Slupphaug G. PLoS One. 2013;8(2):e55493. doi: 10.1371/journal.pone.0055493. Epub 2013 Feb 6.

Images

Antibody Reactive Against Recombinant Protein.Western Blot detection against Immunogen (53.02 KDa) .

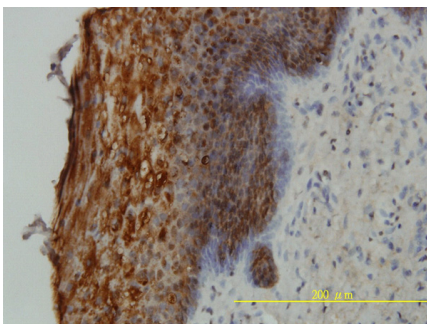


SFN monoclonal antibody (M01), clone 3C3 Western Blot analysis of SFN expression in HeLa ((Cat # AT3840a)

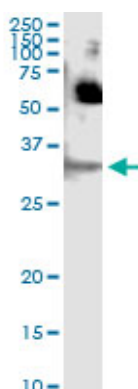


Western Blot analysis of SFN expression in transfected 293T cell line by SFN monoclonal antibody (M01), clone 3C3.

Lane 1: SFN transfected lysate(27.8 KDa).
Lane 2: Non-transfected lysate.



Immunoperoxidase of monoclonal antibody to SFN on formalin-fixed paraffin-embedded human uterine cervix tissue. [antibody concentration 5 ug/ml]



Immunoprecipitation of SFN transfected lysate using anti-SFN monoclonal antibody and Protein A Magnetic Bead ([U0007](#)), and immunoblotted with SFN MaxPab rabbit polyclonal antibody.

Please note: All products are 'FOR RESEARCH USE ONLY. NOT FOR USE IN DIAGNOSTIC OR THERAPEUTIC PROCEDURES'.