

SFPQ Antibody (monoclonal) (M01)

Mouse monoclonal antibody raised against a partial recombinant SFPQ.

Catalog # AT3842a

Product Information

| | |
|--------------------------|---------------------------|
| Application | WB, IF, E |
| Primary Accession | P23246 |
| Other Accession | NM_005066 |
| Reactivity | Human |
| Host | mouse |
| Clonality | monoclonal |
| Isotype | IgG2a Kappa |
| Clone Names | 3B10 |
| Calculated MW | 76149 |

Additional Information

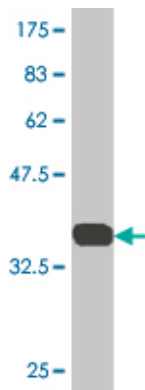
| | |
|---------------------------|---|
| Gene ID | 6421 |
| Other Names | Splicing factor, proline- and glutamine-rich, 100 kDa DNA-pairing protein, hPOMp100, DNA-binding p52/p100 complex, 100 kDa subunit, Polypyrimidine tract-binding protein-associated-splicing factor, PSF, PTB-associated-splicing factor, SFPQ, PSF |
| Target/Specificity | SFPQ (NP_005057, 269 a.a. ~ 361 a.a) partial recombinant protein with GST tag. MW of the GST tag alone is 26 KDa. |
| Dilution | WB~~1:500~1000 IF~~1:50~200 E~~N/A |
| Format | Clear, colorless solution in phosphate buffered saline, pH 7.2 . |
| Storage | Store at -20°C or lower. Aliquot to avoid repeated freezing and thawing. |
| Precautions | SFPQ Antibody (monoclonal) (M01) is for research use only and not for use in diagnostic or therapeutic procedures. |

References

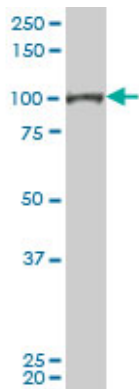
hnRNP M interacts with PSF and p54(nrb) and co-localizes within defined nuclear structures. Marko M, et al. Exp Cell Res, 2010 Feb 1. PMID 19874820. Identification and characterisation of a novel GHR defect disrupting the polypyrimidine tract and resulting in GH insensitivity. David A, et al. Eur J Endocrinol, 2010 Jan. PMID 19812236. Melanotic Xp11 translocation renal cancer: a case with PSF-TFE3 gene fusion and up-regulation of melanogenetic transcripts. Chang IW, et al. Am J Surg Pathol, 2009 Dec. PMID 19809274. Human PSF binds to RAD51 and modulates its homologous-pairing and strand-exchange activities. Morozumi Y, et al. Nucleic Acids Res, 2009 Jul. PMID 19447914. Interplay between polypyrimidine tract

binding protein-associated splicing factor and human myometrial progesterone receptors. Tyson-Capper AJ, et al. J Mol Endocrinol, 2009 Jul. PMID 19339282.

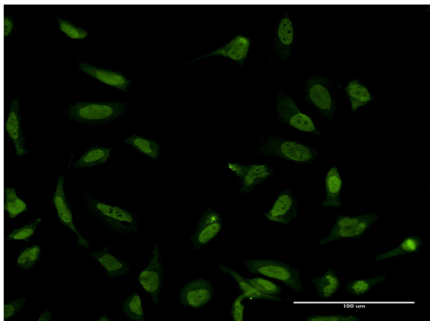
Images



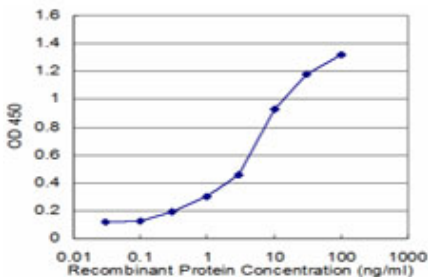
Antibody Reactive Against Recombinant Protein.Western Blot detection against Immunogen (35.97 KDa) .



SFPQ monoclonal antibody (M01), clone 3B10. Western Blot analysis of SFPQ expression in Hela S3 NE ((Cat # AT3842a)



Immunofluorescence of monoclonal antibody to SFPQ on HeLa cell . [antibody concentration 10 ug/ml]



Detection limit for recombinant GST tagged SFPQ is approximately 0.3ng/ml as a capture antibody.

Please note: All products are 'FOR RESEARCH USE ONLY. NOT FOR USE IN DIAGNOSTIC OR THERAPEUTIC PROCEDURES'.