

SFXN3 Antibody (monoclonal) (M01)

Mouse monoclonal antibody raised against a partial recombinant SFXN3.

Catalog # AT3850a

Product Information

Application	WB, E
Primary Accession	Q9BWM7
Other Accession	BC000124
Reactivity	Human
Host	mouse
Clonality	monoclonal
Isotype	IgG2b Kappa
Clone Names	4A3
Calculated MW	35503

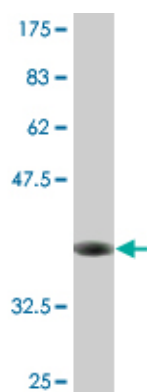
Additional Information

Gene ID	81855
Other Names	Sideroflexin-3, SFXN3
Target/Specificity	SFXN3 (AAH00124.2, 1 a.a. ~ 100 a.a) partial recombinant protein with GST tag. MW of the GST tag alone is 26 KDa.
Dilution	WB~~1:500~1000 E~~N/A
Format	Clear, colorless solution in phosphate buffered saline, pH 7.2 .
Storage	Store at -20°C or lower. Aliquot to avoid repeated freezing and thawing.
Precautions	SFXN3 Antibody (monoclonal) (M01) is for research use only and not for use in diagnostic or therapeutic procedures.

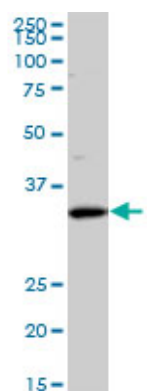
References

Toward a confocal subcellular atlas of the human proteome. Barbe L, et al. Mol Cell Proteomics, 2008 Mar. PMID 18029348. Signal sequence and keyword trap in silico for selection of full-length human cDNAs encoding secretion or membrane proteins from oligo-capped cDNA libraries. Otsuki T, et al. DNA Res, 2005. PMID 16303743. Complete sequencing and characterization of 21,243 full-length human cDNAs. Ota T, et al. Nat Genet, 2004 Jan. PMID 14702039. Generation and initial analysis of more than 15,000 full-length human and mouse cDNA sequences. Strausberg RL, et al. Proc Natl Acad Sci U S A, 2002 Dec 24. PMID 12477932.

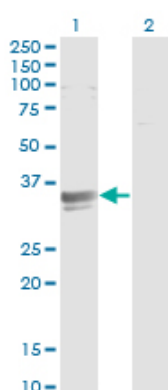
Images



Antibody Reactive Against Recombinant Protein. Western Blot detection against Immunogen (36.63 KDa) .



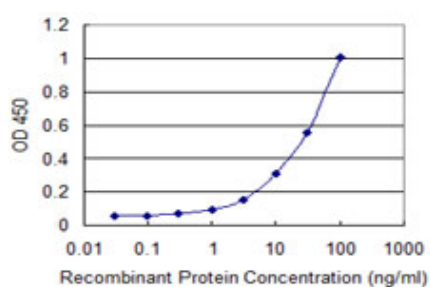
SFXN3 monoclonal antibody (M01), clone 4A3. Western Blot analysis of SFXN3 expression in HeLa S3 NE (Cat # AT3850a)



Western Blot analysis of SFXN3 expression in transfected 293T cell line by SFXN3 monoclonal antibody (M01), clone 4A3.

Lane 1: SFXN3 transfected lysate (Predicted MW: 35.5 KDa).

Lane 2: Non-transfected lysate.



Detection limit for recombinant GST tagged SFXN3 is 1 ng/ml as a capture antibody.

Please note: All products are 'FOR RESEARCH USE ONLY. NOT FOR USE IN DIAGNOSTIC OR THERAPEUTIC PROCEDURES'.