

SGK2 Antibody (monoclonal) (M08)

Mouse monoclonal antibody raised against a partial recombinant SGK2.

Catalog # AT3857a

Product Information

Application	WB, IF, E
Primary Accession	Q9HBY8
Other Accession	BC065511
Reactivity	Human
Host	mouse
Clonality	monoclonal
Isotype	IgG1 Kappa
Clone Names	7C7
Calculated MW	41175

Additional Information

Gene ID	10110
Other Names	Serine/threonine-protein kinase Sgk2, Serum/glucocorticoid-regulated kinase 2, SGK2
Target/Specificity	SGK2 (AAH65511, 293 a.a. ~ 367 a.a) partial recombinant protein with GST tag. MW of the GST tag alone is 26 KDa.
Dilution	WB~~1:500~1000 IF~~1:50~200 E~~N/A
Format	Clear, colorless solution in phosphate buffered saline, pH 7.2 .
Storage	Store at -20°C or lower. Aliquot to avoid repeated freezing and thawing.
Precautions	SGK2 Antibody (monoclonal) (M08) is for research use only and not for use in diagnostic or therapeutic procedures.

Background

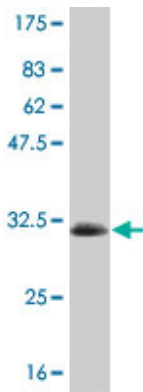
This gene encodes a serine/threonine protein kinase. Although this gene product is similar to serum- and glucocorticoid-induced protein kinase (SGK), this gene is not induced by serum or glucocorticoids. This gene is induced in response to signals that activate phosphatidylinositol 3-kinase, which is also true for SGK. Two alternate transcripts encoding two different isoforms have been described.

References

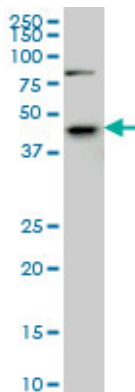
Sgk kinases and their role in epithelial transport. Loffing J, et al. Annu Rev Physiol, 2006. PMID 16460280. Transcriptional maps of 10 human chromosomes at 5-nucleotide resolution. Cheng J, et al.

Science, 2005 May 20. PMID 15790807.Regulation of cardiac shal-related potassium channel Kv 4.3 by serum- and glucocorticoid-inducible kinase isoforms in Xenopus oocytes. Baltaev R, et al. Pflugers Arch, 2005 Apr. PMID 15578212.The status, quality, and expansion of the NIH full-length cDNA project: the Mammalian Gene Collection (MGC). Gerhard DS, et al. Genome Res, 2004 Oct. PMID 15489334.Regulation of KCNE1-dependent K(+) current by the serum and glucocorticoid-inducible kinase (SGK) isoforms. Embark HM, et al. Pflugers Arch, 2003 Feb. PMID 12634932.

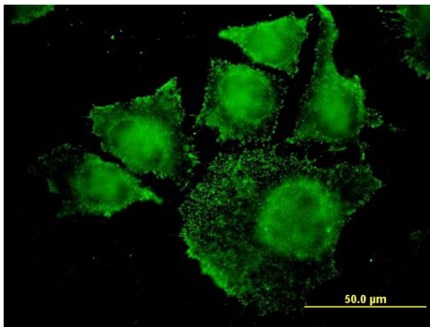
Images



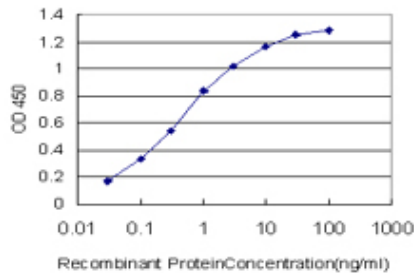
Antibody Reactive Against Recombinant Protein.Western Blot detection against Immunogen (33.88 KDa) .



SGK2 monoclonal antibody (M08), clone 7C7 Western Blot analysis of SGK2 expression in IMR-32 ((Cat # AT3857a)



Immunofluorescence of monoclonal antibody to SGK2 on HeLa cell. [antibody concentration 10 ug/ml]



Detection limit for recombinant GST tagged SGK2 is approximately 0.03ng/ml as a capture antibody.

Please note: All products are 'FOR RESEARCH USE ONLY. NOT FOR USE IN DIAGNOSTIC OR THERAPEUTIC PROCEDURES'.