

SH2D1A Antibody (monoclonal) (M01)

Mouse monoclonal antibody raised against a full length recombinant SH2D1A.

Catalog # AT3862a

Product Information

Application	WB
Primary Accession	O60880
Other Accession	BC020732
Reactivity	Human
Host	mouse
Clonality	monoclonal
Isotype	IgG2a Kappa
Clone Names	1C9
Calculated MW	14187

Additional Information

Gene ID	4068
Other Names	SH2 domain-containing protein 1A, Duncan disease SH2-protein, Signaling lymphocytic activation molecule-associated protein, SLAM-associated protein, T-cell signal transduction molecule SAP, SH2D1A, DSHP, SAP
Target/Specificity	SH2D1A (AAH20732, 1 a.a. ~ 128 a.a) full-length recombinant protein with GST tag. MW of the GST tag alone is 26 KDa.
Dilution	WB~~1:500~1000
Format	Clear, colorless solution in phosphate buffered saline, pH 7.2 .
Storage	Store at -20°C or lower. Aliquot to avoid repeated freezing and thawing.
Precautions	SH2D1A Antibody (monoclonal) (M01) is for research use only and not for use in diagnostic or therapeutic procedures.

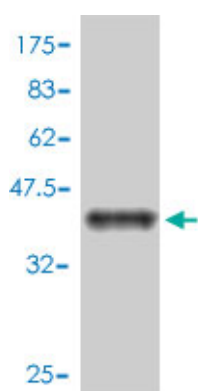
Background

This gene encodes a protein that plays a major role in the bidirectional stimulation of T and B cells. This protein contains an SH2 domain and a short tail. It associates with the signaling lymphocyte-activation molecule, thereby acting as an inhibitor of this transmembrane protein by blocking the recruitment of the SH2-domain-containing signal-transduction molecule SHP-2 to its docking site. This protein can also bind to other related surface molecules that are expressed on activated T, B and NK cells, thereby modifying signal transduction pathways in these cells. Mutations in this gene cause lymphoproliferative syndrome X-linked type 1 or Duncan disease, a rare immunodeficiency characterized by extreme susceptibility to infection with Epstein-Barr virus, with symptoms including severe mononucleosis and malignant lymphoma. Multiple transcript variants encoding different isoforms have been found for this gene.

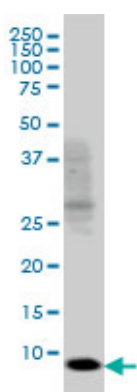
References

1. Diagnosing XLP1 in patients with hemophagocytic lymphohistiocytosis. Meazza R, Tuberosa C, Cetica V, Falco M, Parolini S, Grieve S, Griffiths GM, Sieni E, Marcenaro S, Micalizzi C, Montin D, Fagioli F, Moretta A, Mingari MC, Moretta L, Notarangelo LD, Bottino C, Arico M, Pende DJ. *Allergy Clin Immunol*. 2014 Jun 27. pii: S0091-6749(14)00771-4. doi: 10.1016/j.jaci.2014.04.043.
2. Signaling lymphocytic activation molecule (SLAM)/SLAM-associated protein pathway regulates human B-cell tolerance. Menard L, Cantaert T, Chamberlain N, Tangye SG, Riminton S, Church JA, Klion A, Cunningham-Rundles C, Nichols KE, Meffre EJ. *Allergy Clin Immunol*. 2013 Dec 24. pii: S0091-6749(13)01718-1. doi: 10.1016/j.jaci.2013.10.051.
3. Expansion of somatically reverted memory CD8+ T cells in patients with X-linked lymphoproliferative disease caused by selective pressure from Epstein-Barr virus. Palendira U, Low C, Bell AI, Ma CS, Abbott RJ, Phan TG, Riminton DS, Choo S, Smart JM, Lougaris V, Giliani S, Buckley RH, Grimbacher B, Alvaro F, Klion AD, Nichols KE, Adelstein S, Rickinson AB, Tangye SG. *J Exp Med*. 2012 Apr 9. [Epub ahead of print]
4. Molecular Pathogenesis of EBV Susceptibility in XLP as Revealed by Analysis of Female Carriers with Heterozygous Expression of SAP. Palendira U, Low C, Chan A, Hislop AD, Ho E, Phan TG, Deenick E, Cook MC, Riminton DS, Choo S, Loh R, Alvaro F, Booth C, Gaspar HB, Moretta A, Khanna R, Rickinson AB, Tangye SG. *PLoS Biol*. 2011 Nov;9(11):e1001187. Epub 2011 Nov 15.
5. Early commitment of naive human CD4(+) T cells to the T follicular helper (T(FH)) cell lineage is induced by IL-12. Ma CS, Suryani S, Avery DT, Chan A, Nanan R, Santner-Nanan B, Deenick EK, Tangye SG. *Immunol Cell Biol*. 2009 Sep 1. [Epub ahead of print]

Images



Antibody Reactive Against Recombinant Protein. Western Blot detection against Immunogen (39.82 KDa) .

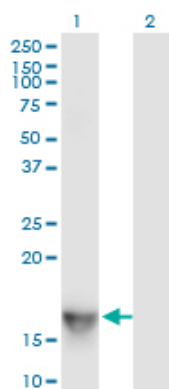


SH2D1A monoclonal antibody (M01), clone 1C9 Western Blot analysis of SH2D1A expression in Jurkat (Cat # AT3862a)

Western Blot analysis of SH2D1A expression in transfected 293T cell line by SH2D1A monoclonal antibody (M01), clone 1C9.

Lane 1: SH2D1A transfected lysate (14.2 KDa).

Lane 2: Non-transfected lysate.



Please note: All products are 'FOR RESEARCH USE ONLY. NOT FOR USE IN DIAGNOSTIC OR THERAPEUTIC PROCEDURES'.