

SH3GL2 Antibody (monoclonal) (M01)

Mouse monoclonal antibody raised against a partial recombinant SH3GL2.

Catalog # AT3873a

Product Information

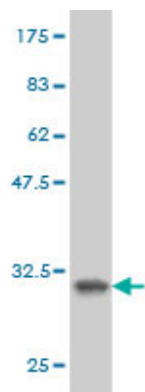
Application	WB, IHC, E
Primary Accession	Q99962
Other Accession	NM_003026
Reactivity	Human, Rat
Host	mouse
Clonality	monoclonal
Isotype	IgG2a Kappa
Clone Names	5A6
Calculated MW	39962

Additional Information

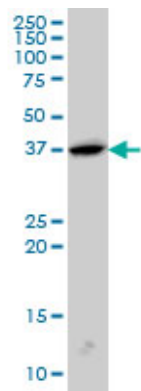
Gene ID	6456
Other Names	Endophilin-A1, EEN-B1, Endophilin-1, SH3 domain protein 2A, SH3 domain-containing GRB2-like protein 2, SH3GL2, CNSA2, SH3D2A
Target/Specificity	SH3GL2 (NP_003017, 64 a.a. ~ 124 a.a) partial recombinant protein with GST tag. MW of the GST tag alone is 26 KDa.
Dilution	WB~~1:500~1000 IHC~~1:100~500 E~~N/A
Format	Clear, colorless solution in phosphate buffered saline, pH 7.2 .
Storage	Store at -20°C or lower. Aliquot to avoid repeated freezing and thawing.
Precautions	SH3GL2 Antibody (monoclonal) (M01) is for research use only and not for use in diagnostic or therapeutic procedures.

References

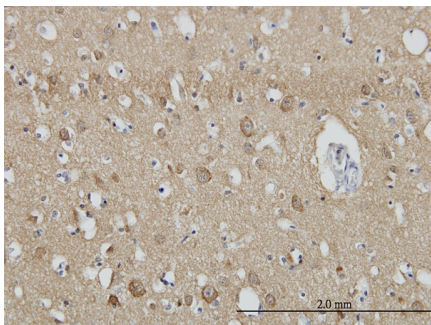
Personalized smoking cessation: interactions between nicotine dose, dependence and quit-success genotype score. Rose JE, et al. Mol Med, 2010 Jul-Aug. PMID 20379614. A genome-wide study of common SNPs and CNVs in cognitive performance in the CANTAB. Need AC, et al. Hum Mol Genet, 2009 Dec 1. PMID 19734545. Multi-ethnic genetic association study of carotid intima-media thickness using a targeted cardiovascular SNP microarray. Lanktree MB, et al. Stroke, 2009 Oct. PMID 19679847. Prefrontal cortex shotgun proteome analysis reveals altered calcium homeostasis and immune system imbalance in schizophrenia. Martins-de-Souza D, et al. Eur Arch Psychiatry Clin Neurosci, 2009 Apr. PMID 19165527. Genome-wide association analysis of susceptibility and clinical phenotype in multiple sclerosis. Baranzini SE, et al. Hum Mol Genet, 2009 Feb 15. PMID 19010793.



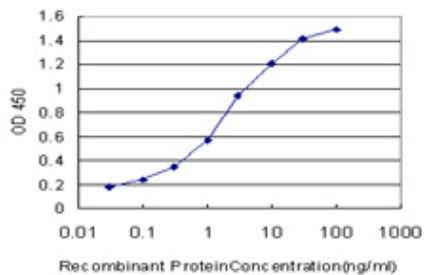
Antibody Reactive Against Recombinant Protein.Western Blot detection against Immunogen (32.45 KDa) .



SH3GL2 monoclonal antibody (M01), clone 5A6 Western Blot analysis of SH3GL2 expression in PC-12 ((Cat # AT3873a)



Immunoperoxidase of monoclonal antibody to SH3GL2 on formalin-fixed paraffin-embedded human cerebral cortex. [antibody concentration 3 ug/ml]



Detection limit for recombinant GST tagged SH3GL2 is approximately 0.1ng/ml as a capture antibody.

Please note: All products are 'FOR RESEARCH USE ONLY. NOT FOR USE IN DIAGNOSTIC OR THERAPEUTIC PROCEDURES'.