

# SH3RF2 Antibody (monoclonal) (M01)

Mouse monoclonal antibody raised against a partial recombinant SH3RF2.

Catalog # AT3878a

## Product Information

---

<b>Application</b>	WB, E
<b>Primary Accession</b>	<a href="#">Q8TEC5</a>
<b>Other Accession</b>	<a href="#">NM_152550</a>
<b>Reactivity</b>	Human
<b>Host</b>	mouse
<b>Clonality</b>	monoclonal
<b>Isotype</b>	IgG2a Kappa
<b>Clone Names</b>	4E11
<b>Calculated MW</b>	79320

## Additional Information

---

<b>Gene ID</b>	153769
<b>Other Names</b>	Putative E3 ubiquitin-protein ligase SH3RF2, 632-, Heart protein phosphatase 1-binding protein, HEPP1, Protein phosphatase 1 regulatory subunit 39, RING finger protein 158, SH3 domain-containing RING finger protein 2, SH3RF2, PPP1R39, RNF158
<b>Target/Specificity</b>	SH3RF2 (NP_660205, 640 a.a. ~ 729 a.a) partial recombinant protein with GST tag. MW of the GST tag alone is 26 KDa.
<b>Dilution</b>	WB~~1:500~1000 E~~N/A
<b>Format</b>	Clear, colorless solution in phosphate buffered saline, pH 7.2 .
<b>Storage</b>	Store at -20°C or lower. Aliquot to avoid repeated freezing and thawing.
<b>Precautions</b>	SH3RF2 Antibody (monoclonal) (M01) is for research use only and not for use in diagnostic or therapeutic procedures.

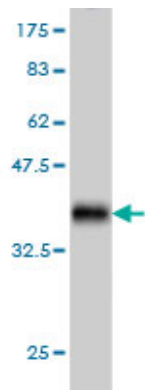
## References

---

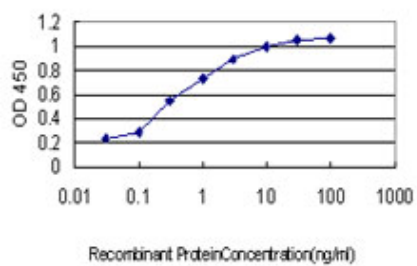
1.SH3RF2 Functions as an Oncogene by Mediating PAK4 Protein Stability.Kim TW, Kang YK, Park ZY, Kim YH, Hong SW, Su JO, Sohn HA, Yang SJ, Jang YJ, Lee DC, Kim SY, Yoo HS, Kim E, Yeom YI, Park KCCarcinogenesis. 2013 Oct 15.2.Sh3rf2/POSHER promotes cell survival by RING-mediated proteasomal degradation of the JNK scaffold POSH.Wilhelm M, Kukekov NV, Schmit TL, Biagas KV, Sproul AA, Gire S, Maes ME, Xu Z, Greene LA.J Biol Chem. 2011 Nov 28.

## Images

---



Antibody Reactive Against Recombinant Protein. Western Blot detection against Immunogen (35.64 KDa) .



Detection limit for recombinant GST tagged SH3RF2 is approximately 0.03ng/ml as a capture antibody.

Please note: All products are 'FOR RESEARCH USE ONLY. NOT FOR USE IN DIAGNOSTIC OR THERAPEUTIC PROCEDURES'.