

SHC2 Antibody (monoclonal) (M01)

Mouse monoclonal antibody raised against a partial recombinant SHC2.

Catalog # AT3881a

Product Information

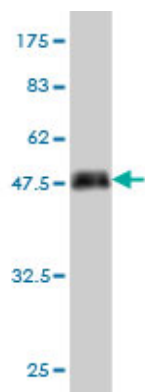
Application	WB
Primary Accession	P98077
Other Accession	XM_375550
Reactivity	Human, Mouse, Rat
Host	mouse
Clonality	monoclonal
Isotype	IgG2a Kappa
Clone Names	4A4
Calculated MW	61916

Additional Information

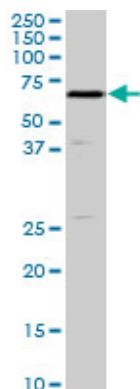
Gene ID	25759
Other Names	SHC-transforming protein 2, Protein Sck, SHC-transforming protein B, Src homology 2 domain-containing-transforming protein C2, SH2 domain protein C2, SHC2, SCK, SHCB
Target/Specificity	SHC2 (XP_375550, 718 a.a. ~ 829 a.a) partial recombinant protein with GST tag. MW of the GST tag alone is 26 KDa.
Dilution	WB~~1:500~1000
Format	Clear, colorless solution in phosphate buffered saline, pH 7.2 .
Storage	Store at -20°C or lower. Aliquot to avoid repeated freezing and thawing.
Precautions	SHC2 Antibody (monoclonal) (M01) is for research use only and not for use in diagnostic or therapeutic procedures.

Images

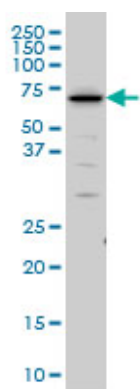
Antibody Reactive Against Recombinant Protein.Western Blot detection against Immunogen (38.06 KDa) .



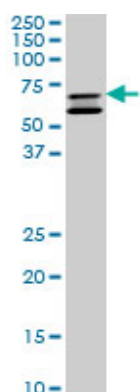
SHC2 monoclonal antibody (M01), clone 4A4. Western Blot analysis of SHC2 expression in PC-12 ((Cat # AT3881a)



SHC2 monoclonal antibody (M01), clone 4A4 Western Blot analysis of SHC2 expression in IMR-32 ((Cat # AT3881a)



SHC2 monoclonal antibody (M01), clone 4A4. Western Blot analysis of SHC2 expression in NIH/3T3 ((Cat # AT3881a)



Please note: All products are 'FOR RESEARCH USE ONLY. NOT FOR USE IN DIAGNOSTIC OR THERAPEUTIC PROCEDURES'.