

SLBP Antibody (monoclonal) (M01)

Mouse monoclonal antibody raised against a full length recombinant SLBP.

Catalog # AT3899a

Product Information

Application	WB, IF
Primary Accession	Q14493
Other Accession	BC014908
Reactivity	Human
Host	Mouse
Clonality	monoclonal
Isotype	IgG2a kappa
Clone Names	2C4-1C8
Calculated MW	31286

Additional Information

Gene ID	7884
Other Names	Histone RNA hairpin-binding protein, Histone stem-loop-binding protein, SLBP, HBP
Target/Specificity	SLBP (AAH14908, 1 a.a. ~ 270 a.a) full-length recombinant protein with GST tag. MW of the GST tag alone is 26 KDa.
Dilution	WB~~1:500~1000 IF~~1:50~200
Format	Clear, colorless solution in phosphate buffered saline, pH 7.2 .
Storage	Store at -20°C or lower. Aliquot to avoid repeated freezing and thawing.
Precautions	SLBP Antibody (monoclonal) (M01) is for research use only and not for use in diagnostic or therapeutic procedures.

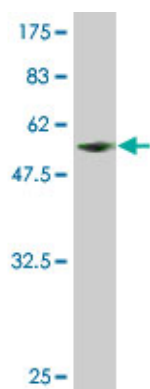
Background

This gene encodes a protein that binds to the stem-loop structure in replication-dependent histone mRNAs. Histone mRNAs do not contain introns or polyadenylation signals, and are processed by endonucleolytic cleavage. The stem-loop structure is essential for efficient processing but this structure also controls the transport, translation and stability of histone mRNAs. Expression of the protein is regulated during the cell cycle, increasing more than 10-fold during the latter part of G1.

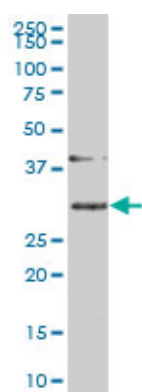
References

1. Destabilization of CDC6 upon DNA damage is dependent on neddylation but independent of Cullin E3

Images



Antibody Reactive Against Recombinant Protein. Western Blot detection against Immunogen (55.44 KDa) .



SLBP monoclonal antibody (M01), clone 2C4-1C8 Western Blot analysis of SLBP expression in HeLa S3 NE(Cat # AT3899a)



Immunofluorescence of monoclonal antibody to SLBP on HeLa cell. [antibody concentration 10 ug/ml]

Please note: All products are 'FOR RESEARCH USE ONLY. NOT FOR USE IN DIAGNOSTIC OR THERAPEUTIC PROCEDURES'.