

## SLC1A2 Antibody (monoclonal) (M07)

Mouse monoclonal antibody raised against a partial recombinant SLC1A2.

Catalog # AT3905a

### Product Information

---

<b>Application</b>	WB, E
<b>Primary Accession</b>	<a href="#">P43004</a>
<b>Other Accession</b>	<a href="#">NM_004171</a>
<b>Reactivity</b>	Human
<b>Host</b>	mouse
<b>Clonality</b>	monoclonal
<b>Isotype</b>	IgG2a Kappa
<b>Clone Names</b>	1D8
<b>Calculated MW</b>	62104

### Additional Information

---

<b>Gene ID</b>	6506
<b>Other Names</b>	Excitatory amino acid transporter 2, Glutamate/aspartate transporter II, Sodium-dependent glutamate/aspartate transporter 2, Solute carrier family 1 member 2, SLC1A2, EAAT2, GLT1
<b>Target/Specificity</b>	SLC1A2 (NP_004162, 160 a.a. ~ 239 a.a) partial recombinant protein with GST tag. MW of the GST tag alone is 26 KDa.
<b>Dilution</b>	WB~~1:500~1000 E~~N/A
<b>Format</b>	Clear, colorless solution in phosphate buffered saline, pH 7.2 .
<b>Storage</b>	Store at -20°C or lower. Aliquot to avoid repeated freezing and thawing.
<b>Precautions</b>	SLC1A2 Antibody (monoclonal) (M07) is for research use only and not for use in diagnostic or therapeutic procedures.

### Background

---

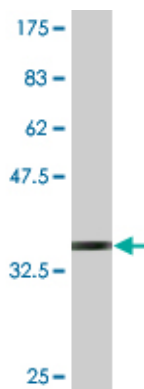
This gene encodes a member of a family of solute transporter proteins. The membrane-bound protein is the principal transporter that clears the excitatory neurotransmitter glutamate from the extracellular space at synapses in the central nervous system. Glutamate clearance is necessary for proper synaptic activation and to prevent neuronal damage from excessive activation of glutamate receptors. Mutations in and decreased expression of this protein are associated with amyotrophic lateral sclerosis. Alternatively spliced transcript variants of this gene have been described, but their full-length nature is not known.

### References

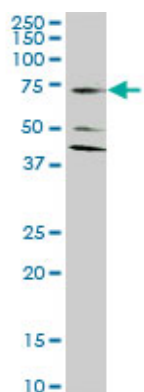
---

Analysis of 9p24 and 11p12-13 regions in autism spectrum disorders: rs1340513 in the JMJD2C gene is associated with ASDs in Finnish sample. Kantoj?rvi K, et al. Psychiatr Genet, 2010 Jun. PMID 20410850. Comprehensive copy number variant (CNV) analysis of neuronal pathways genes in psychiatric disorders identifies rare variants within patients. Saus E, et al. J Psychiatr Res, 2010 Apr 14. PMID 20398908. Personalized smoking cessation: interactions between nicotine dose, dependence and quit-success genotype score. Rose JE, et al. Mol Med, 2010 Jul-Aug. PMID 20379614. Increased expression of cholesterol 24S-hydroxylase results in disruption of glial glutamate transporter EAAT2 association with lipid rafts: a potential role in Alzheimer's disease. Tian G, et al. J Neurochem, 2010 May. PMID 20193040. Comparative structural and functional analysis of the GLT-1/EAAT-2 promoter from man and rat. Allritz C, et al. J Neurosci Res, 2010 May 1. PMID 19998491.

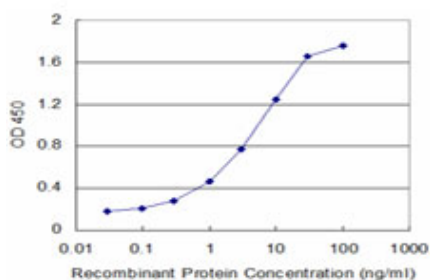
## Images



Antibody Reactive Against Recombinant Protein. Western Blot detection against Immunogen (34.54 KDa) .



SLC1A2 monoclonal antibody (M07), clone 1D8. Western Blot analysis of SLC1A2 expression in HeLa (Cat # AT3905a )



Detection limit for recombinant GST tagged SLC1A2 is approximately 0.03ng/ml as a capture antibody.

Please note: All products are 'FOR RESEARCH USE ONLY. NOT FOR USE IN DIAGNOSTIC OR THERAPEUTIC PROCEDURES'.