

SLC25A11 Antibody (monoclonal) (M01)

Mouse monoclonal antibody raised against a full length recombinant SLC25A11.

Catalog # AT3910a

Product Information

Application	WB, IHC, E
Primary Accession	Q02978
Other Accession	BC006508
Reactivity	Human
Host	mouse
Clonality	monoclonal
Isotype	IgG1 Kappa
Clone Names	3G4
Calculated MW	34062

Additional Information

Gene ID	8402
Other Names	Mitochondrial 2-oxoglutarate/malate carrier protein, OGCP, Solute carrier family 25 member 11, SLC25A11, SLC20A4
Target/Specificity	SLC25A11 (AAH06508, 1 a.a. ~ 314 a.a) full-length recombinant protein with GST tag. MW of the GST tag alone is 26 KDa.
Dilution	WB~~1:500~1000 IHC~~1:100~500 E~~N/A
Format	Clear, colorless solution in phosphate buffered saline, pH 7.2 .
Storage	Store at -20°C or lower. Aliquot to avoid repeated freezing and thawing.
Precautions	SLC25A11 Antibody (monoclonal) (M01) is for research use only and not for use in diagnostic or therapeutic procedures.

Background

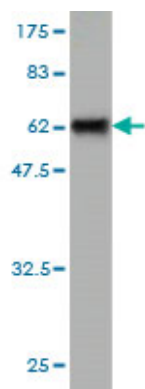
The oxoglutarate/malate carrier transports 2-oxoglutarate across the inner membranes of mitochondria in an electroneutral exchange for malate or other dicarboxylic acids (summarized by Iacobazzi et al., 1992 [PubMed 1457818]).

References

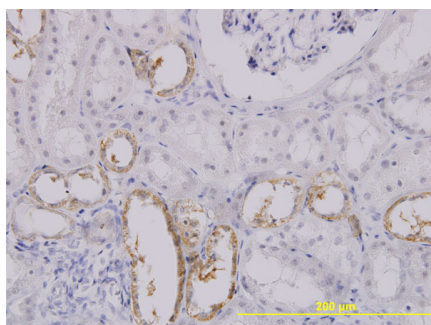
Variation at the NFATC2 Locus Increases the Risk of Thiazolinedione-Induced Edema in the Diabetes REduction Assessment with ramipril and rosiglitazone Medication (DREAM) Study. Bailey SD, et al. Diabetes Care, 2010 Jul 13. PMID 20628086. Gene-centric association signals for lipids and apolipoproteins identified

via the HumanCVD BeadChip. Talmud PJ, et al. Am J Hum Genet, 2009 Nov. PMID 19913121. Defining the human deubiquitinating enzyme interaction landscape. Sowa ME, et al. Cell, 2009 Jul 23. PMID 19615732. Porphyrin accumulation in mitochondria is mediated by 2-oxoglutarate carrier. Kabe Y, et al. J Biol Chem, 2006 Oct 20. PMID 16920706. Identification of intrahepatic cholangiocarcinoma related genes by comparison with normal liver tissues using expressed sequence tags. Wang AG, et al. Biochem Biophys Res Commun, 2006 Jul 7. PMID 16712791.

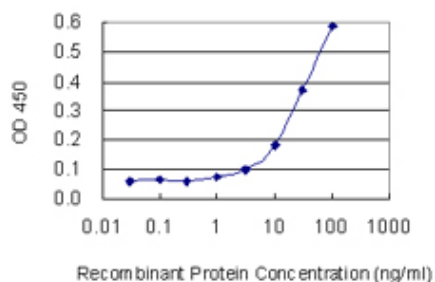
Images



Antibody Reactive Against Recombinant Protein. Western Blot detection against Immunogen (60.28 KDa) .



Immunoperoxidase of monoclonal antibody to SLC25A11 on formalin-fixed paraffin-embedded human kidney. [antibody concentration 3 ug/ml]



Detection limit for recombinant GST tagged SLC25A11 is 1 ng/ml as a capture antibody.

Please note: All products are 'FOR RESEARCH USE ONLY. NOT FOR USE IN DIAGNOSTIC OR THERAPEUTIC PROCEDURES'.