

SLC2A4RG Antibody (monoclonal) (M02)

Mouse monoclonal antibody raised against a partial recombinant SLC2A4RG.

Catalog # AT3920a

Product Information

Application	WB, IF
Primary Accession	Q9NR83
Other Accession	NM_020062
Reactivity	Human
Host	mouse
Clonality	monoclonal
Isotype	IgG2a Kappa
Clone Names	4C10
Calculated MW	41267

Additional Information

Gene ID	56731
Other Names	SLC2A4 regulator, GLUT4 enhancer factor, GEF, Huntington disease gene regulatory region-binding protein 1, HDBP-1, SLC2A4RG, HDBP1
Target/Specificity	SLC2A4RG (NP_064446, 178 a.a. ~ 269 a.a) partial recombinant protein with GST tag. MW of the GST tag alone is 26 KDa.
Dilution	WB~~1:500~1000 IF~~1:50~200
Format	Clear, colorless solution in phosphate buffered saline, pH 7.2 .
Storage	Store at -20°C or lower. Aliquot to avoid repeated freezing and thawing.
Precautions	SLC2A4RG Antibody (monoclonal) (M02) is for research use only and not for use in diagnostic or therapeutic procedures.

Background

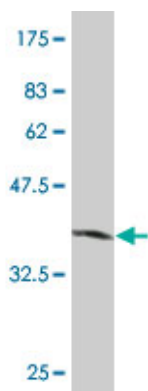
The protein encoded by this gene is a nuclear transcription factor involved in the activation of the solute carrier family 2 member 4 gene. The encoded protein interacts with another transcription factor, myocyte enhancer factor 2, to activate transcription of this gene.

References

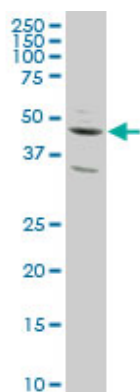
Polymorphism in postinsulin receptor signaling pathway is not associated with polycystic ovary syndrome. Jones MR, et al. Fertil Steril, 2008 Dec. PMID 18249389. Exercise increases MEF2- and GEF DNA-binding activity in human skeletal muscle. McGee SL, et al. FASEB J, 2006 Feb. PMID 16368714. The status, quality,

and expansion of the NIH full-length cDNA project: the Mammalian Gene Collection (MGC). Gerhard DS, et al. Genome Res, 2004 Oct. PMID 15489334. Regulation of the human GLUT4 gene promoter: interaction between a transcriptional activator and myocyte enhancer factor 2A. Knight JB, et al. Proc Natl Acad Sci U S A, 2003 Dec 9. PMID 14630949. Novel nuclear shuttle proteins, HDBP1 and HDBP2, bind to neuronal cell-specific cis-regulatory element in the promoter for the human Huntington's disease gene. Tanaka K, et al. J Biol Chem, 2004 Feb 20. PMID 14625278.

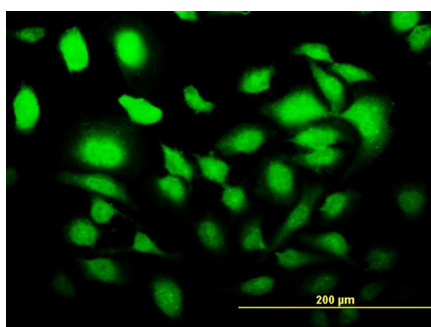
Images



Antibody Reactive Against Recombinant Protein. Western Blot detection against Immunogen (35.86 KDa) .



SLC2A4RG monoclonal antibody (M02), clone 4C10
Western Blot analysis of SLC2A4RG expression in HeLa (Cat # AT3920a)



Immunofluorescence of monoclonal antibody to SLC2A4RG on HeLa cell. [antibody concentration 10 ug/ml]

Please note: All products are 'FOR RESEARCH USE ONLY. NOT FOR USE IN DIAGNOSTIC OR THERAPEUTIC PROCEDURES'.