

SLC33A1 Antibody (monoclonal) (M07)

Mouse monoclonal antibody raised against a partial recombinant SLC33A1.

Catalog # AT3921a

Product Information

Application	WB, E
Primary Accession	O00400
Other Accession	NM_004733
Reactivity	Human, Rat
Host	mouse
Clonality	monoclonal
Isotype	IgG2a Kappa
Clone Names	3A4
Calculated MW	60909

Additional Information

Gene ID	9197
Other Names	Acetyl-coenzyme A transporter 1, AT-1, Acetyl-CoA transporter 1, Solute carrier family 33 member 1, SLC33A1, ACATN, AT1
Target/Specificity	SLC33A1 (NP_004724, 1 a.a. ~ 69 a.a) partial recombinant protein with GST tag. MW of the GST tag alone is 26 KDa.
Dilution	WB~~1:500~1000 E~~N/A
Format	Clear, colorless solution in phosphate buffered saline, pH 7.2 .
Storage	Store at -20°C or lower. Aliquot to avoid repeated freezing and thawing.
Precautions	SLC33A1 Antibody (monoclonal) (M07) is for research use only and not for use in diagnostic or therapeutic procedures.

Background

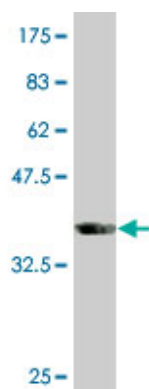
The protein encoded by this gene is required for the formation of O-acetylated (Ac) gangliosides. The encoded protein is predicted to contain 6 to 10 transmembrane domains, and a leucine zipper motif in transmembrane domain III. Defects in this gene have been reported to cause spastic paraplegia autosomal dominant type 42 (SPG42) in one Chinese family, but not in similar patients of European descent. Two transcript variants encoding the same protein have been found for this gene.

References

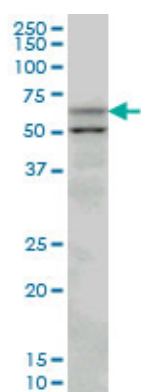
1.SLC33A1/AT-1 regulates the induction of autophagy down-stream of IRE1/XBP1.Pehar M, Jonas MC, Hare

TM, Puglielli LJ Biol Chem. 2012 Jul 11;287(28):24112-24121. AT-1 is the ER membrane acetyl-CoA transporter and is essential for cell viability. Jonas MC, Pehar M, Puglielli LJ Cell Sci. 2010 Oct 1;123(Pt 19):3378-88. Epub 2010 Sep 7.

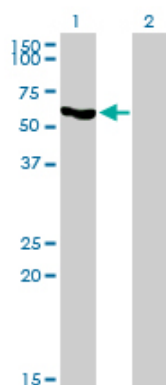
Images



Antibody Reactive Against Recombinant Protein. Western Blot detection against Immunogen (33.33 KDa) .

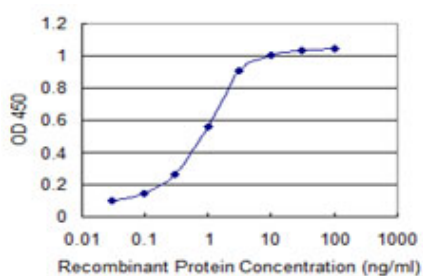


SLC33A1 monoclonal antibody (M07), clone 3A4 Western Blot analysis of SLC33A1 expression in PC-12 ((Cat # AT3921a)



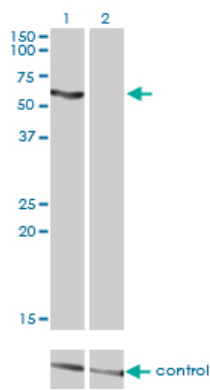
Western Blot analysis of SLC33A1 expression in transfected 293T cell line by SLC33A1 monoclonal antibody (M07), clone 3A4.

Lane 1: SLC33A1 transfected lysate(60.9 KDa).
Lane 2: Non-transfected lysate.



Detection limit for recombinant GST tagged SLC33A1 is 0.03 ng/ml as a capture antibody.

Western blot analysis of SLC33A1 over-expressed 293 cell line, cotransfected with SLC33A1 Validated Chimera RNAi ((Cat # AT3921a)



Please note: All products are 'FOR RESEARCH USE ONLY. NOT FOR USE IN DIAGNOSTIC OR THERAPEUTIC PROCEDURES'.