

SLC44A1 Antibody (monoclonal) (M02)

Mouse monoclonal antibody raised against a partial recombinant SLC44A1.

Catalog # AT3924a

Product Information

Application	WB, E
Primary Accession	Q8WWI5
Other Accession	NM_080546
Reactivity	Human
Host	mouse
Clonality	monoclonal
Isotype	IgG2a Kappa
Clone Names	1C4
Calculated MW	73302

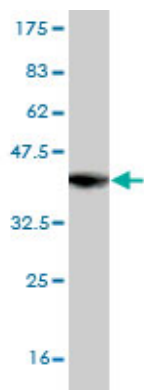
Additional Information

Gene ID	23446
Other Names	Choline transporter-like protein 1, CDw92, Solute carrier family 44 member 1, CD92, SLC44A1, CD92, CDW92, CTL1
Target/Specificity	SLC44A1 (NP_536856, 74 a.a. ~ 183 a.a) partial recombinant protein with GST tag. MW of the GST tag alone is 26 KDa.
Dilution	WB~~1:500~1000 E~~N/A
Format	Clear, colorless solution in phosphate buffered saline, pH 7.2 .
Storage	Store at -20°C or lower. Aliquot to avoid repeated freezing and thawing.
Precautions	SLC44A1 Antibody (monoclonal) (M02) is for research use only and not for use in diagnostic or therapeutic procedures.

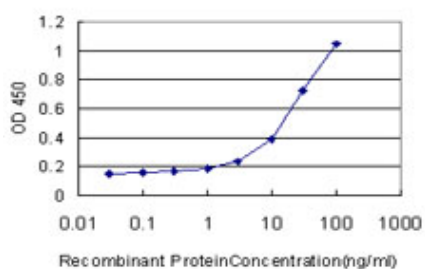
References

Detection of choline transporter-like 1 protein CTL1 in neuroblastoma x glioma cells and in the CNS, and its role in choline uptake. Machov? E, et al. J Neurochem, 2009 Aug. PMID 19519661. Meta-analysis of genome-wide association data identifies two loci influencing age at menarche. Perry JR, et al. Nat Genet, 2009 Jun. PMID 19448620. The solute carrier 44A1 is a mitochondrial protein and mediates choline transport. Michel V, et al. FASEB J, 2009 Aug. PMID 19357133. Genomic organization, promoter activity, and expression of the human choline transporter-like protein 1. Yuan Z, et al. Physiol Genomics, 2006 Jun 16. PMID 16609143. Impaired trafficking of choline transporter-like protein-1 at plasma membrane and inhibition of choline transport in THP-1 monocyte-derived macrophages. Fullerton MD, et al. Am J Physiol Cell Physiol, 2006 Apr. PMID 16319125.

Images



Antibody Reactive Against Recombinant Protein. Western Blot detection against Immunogen (37.84 KDa) .



Detection limit for recombinant GST tagged SLC44A1 is approximately 3ng/ml as a capture antibody.

Citations

- [Expression of choline and acetylcholine transporters in synovial tissue and cartilage of patients with rheumatoid arthritis and osteoarthritis.](#)

Please note: All products are 'FOR RESEARCH USE ONLY. NOT FOR USE IN DIAGNOSTIC OR THERAPEUTIC PROCEDURES'.