

SLC4A4 Antibody (monoclonal) (M01)

Mouse monoclonal antibody raised against a full length recombinant SLC4A4.

Catalog # AT3927a

Product Information

Application	WB, E
Primary Accession	Q9Y6R1
Other Accession	BC030977
Reactivity	Human
Host	mouse
Clonality	monoclonal
Isotype	IgG2a Kappa
Clone Names	1G2
Calculated MW	121461

Additional Information

Gene ID	8671
Other Names	Electrogenic sodium bicarbonate cotransporter 1, Sodium bicarbonate cotransporter, Na(+)/HCO3(-) cotransporter, Solute carrier family 4 member 4, kNBC1, SLC4A4, NBC, NBC1, NBCE1
Target/Specificity	SLC4A4 (AAH30977, 1 a.a. ~ 646 a.a) full-length recombinant protein with GST tag. MW of the GST tag alone is 26 KDa.
Dilution	WB~~1:500~1000 E~~N/A
Format	Clear, colorless solution in phosphate buffered saline, pH 7.2 .
Storage	Store at -20°C or lower. Aliquot to avoid repeated freezing and thawing.
Precautions	SLC4A4 Antibody (monoclonal) (M01) is for research use only and not for use in diagnostic or therapeutic procedures.

Background

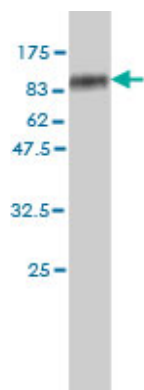
This gene encodes a sodium bicarbonate cotransporter (NBC) involved in the regulation of bicarbonate secretion and absorption and intracellular pH. Mutations in this gene are associated with proximal renal tubular acidosis. Multiple transcript variants encoding different isoforms have been found for this gene.

References

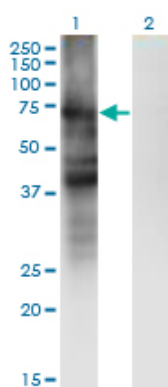
Variation at the NFATC2 Locus Increases the Risk of Thiazolinedione-Induced Edema in the Diabetes REduction Assessment with ramipril and rosiglitazone Medication (DREAM) Study. Bailey SD, et al. Diabetes

Care, 2010 Jul 13. PMID 20628086. Topological location and structural importance of the NBCe1-A residues mutated in proximal renal tubular acidosis. Zhu Q, et al. J Biol Chem, 2010 Apr 30. PMID 20197274. Gene-centric association signals for lipids and apolipoproteins identified via the HumanCVD BeadChip. Talmud PJ, et al. Am J Hum Genet, 2009 Nov. PMID 19913121. Modifier gene study of meconium ileus in cystic fibrosis: statistical considerations and gene mapping results. Dorfman R, et al. Hum Genet, 2009 Aug 7. PMID 19662435. Mutation of Aspartate 555 of the Sodium/Bicarbonate Transporter SLC4A4/NBCe1 Induces Chloride Transport. Yang HS, et al. J Biol Chem, 2009 Jun 5. PMID 19336397.

Images



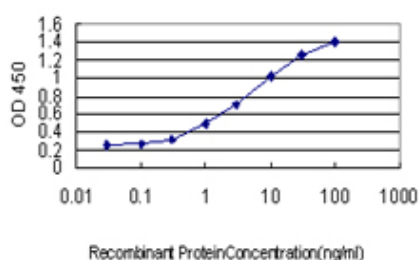
Antibody Reactive Against Recombinant Protein. Western Blot detection against Immunogen (96.8 KDa) .



Western Blot analysis of SLC4A4 expression in transfected 293T cell line by SLC4A4 monoclonal antibody (M01), clone 1G2.

Lane 1: SLC4A4 transfected lysate (Predicted MW: 72 KDa).

Lane 2: Non-transfected lysate.



Detection limit for recombinant GST tagged SLC4A4 is approximately 0.3 ng/ml as a capture antibody.

Please note: All products are 'FOR RESEARCH USE ONLY. NOT FOR USE IN DIAGNOSTIC OR THERAPEUTIC PROCEDURES'.