

## SLC4A8 Antibody (monoclonal) (M04)

Mouse monoclonal antibody raised against a partial recombinant SLC4A8.

Catalog # AT3928a

### Product Information

---

<b>Application</b>	WB, IHC, E
<b>Primary Accession</b>	<a href="#">Q2Y0W8</a>
<b>Other Accession</b>	<a href="#">NM_004858</a>
<b>Reactivity</b>	Human
<b>Host</b>	mouse
<b>Clonality</b>	monoclonal
<b>Isotype</b>	IgG3 Kappa
<b>Clone Names</b>	6E12
<b>Calculated MW</b>	122938

### Additional Information

---

<b>Gene ID</b>	9498
<b>Other Names</b>	Electroneutral sodium bicarbonate exchanger 1, Electroneutral Na(+)-driven Cl-HCO <sub>3</sub> exchanger, Solute carrier family 4 member 8, k-NBC3, S4A8
<b>Target/Specificity</b>	SLC4A8 (NP_004849, 187 a.a. ~ 286 a.a) partial recombinant protein with GST tag. MW of the GST tag alone is 26 KDa.
<b>Dilution</b>	WB~~1:500~1000 IHC~~1:100~500 E~~N/A
<b>Format</b>	Clear, colorless solution in phosphate buffered saline, pH 7.2 .
<b>Storage</b>	Store at -20°C or lower. Aliquot to avoid repeated freezing and thawing.
<b>Precautions</b>	SLC4A8 Antibody (monoclonal) (M04) is for research use only and not for use in diagnostic or therapeutic procedures.

### References

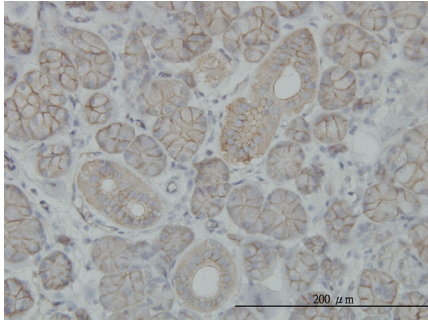
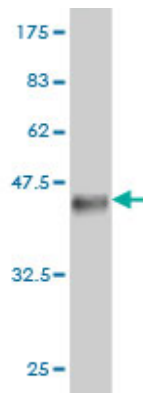
---

1.Negative shift in the glycine reversal potential mediated by a Ca<sup>2+</sup>- and pH-dependent mechanism in interneurons.Kim Y, Trussell LO.J Neurosci. 2009 Sep 16;29(37):11495-510.

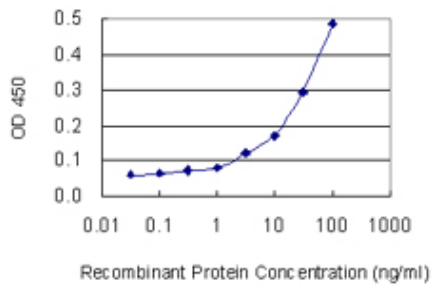
### Images

---

Antibody Reactive Against Recombinant Protein.Western Blot detection against Immunogen (36.74 KDa) .



Immunoperoxidase of monoclonal antibody to SLC4A8 on formalin-fixed paraffin-embedded human salivary gland. [antibody concentration 3 ug/ml]



Detection limit for recombinant GST tagged SLC4A8 is 1 ng/ml as a capture antibody.

Please note: All products are 'FOR RESEARCH USE ONLY. NOT FOR USE IN DIAGNOSTIC OR THERAPEUTIC PROCEDURES'.