

SLC4A8 Antibody (monoclonal) (M05)

Mouse monoclonal antibody raised against a partial recombinant SLC4A8.

Catalog # AT3929a

Product Information

Application	WB
Primary Accession	Q2Y0W8
Other Accession	NM_004858
Reactivity	Human, Mouse
Host	mouse
Clonality	monoclonal
Isotype	IgG3 Kappa
Clone Names	1G10
Calculated MW	122938

Additional Information

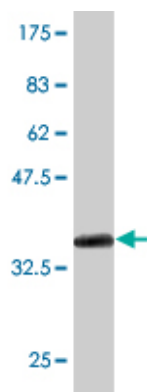
Gene ID	9498
Other Names	Electroneutral sodium bicarbonate exchanger 1, Electroneutral Na(+)-driven Cl-HCO ₃ exchanger, Solute carrier family 4 member 8, k-NBC3, S4A8
Target/Specificity	SLC4A8 (NP_004849, 187 a.a. ~ 286 a.a) partial recombinant protein with GST tag. MW of the GST tag alone is 26 KDa.
Dilution	WB~~1:500~1000
Format	Clear, colorless solution in phosphate buffered saline, pH 7.2 .
Storage	Store at -20°C or lower. Aliquot to avoid repeated freezing and thawing.
Precautions	SLC4A8 Antibody (monoclonal) (M05) is for research use only and not for use in diagnostic or therapeutic procedures.

References

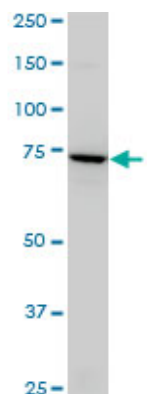
1.Negative shift in the glycine reversal potential mediated by a Ca²⁺- and pH-dependent mechanism in interneurons.Kim Y, Trussell LO.J Neurosci. 2009 Sep 16;29(37):11495-510.

Images

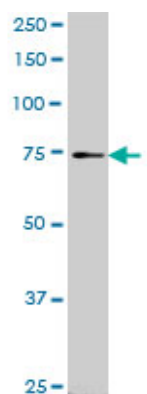
Antibody Reactive Against Recombinant Protein.Western Blot detection against Immunogen (36.74 KDa) .



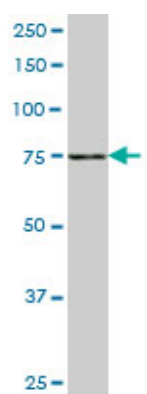
SLC4A8 monoclonal antibody (M05), clone 1G10. Western Blot analysis of SLC4A8 expression in HeLa (Cat # AT3929a)



SLC4A8 monoclonal antibody (M05), clone 1G10. Western Blot analysis of SLC4A8 expression in NIH/3T3 (Cat # AT3929a)



SLC4A8 monoclonal antibody (M05), clone 1G10. Western Blot analysis of SLC4A8 expression in K-562 (Cat # AT3929a)



Please note: All products are 'FOR RESEARCH USE ONLY. NOT FOR USE IN DIAGNOSTIC OR THERAPEUTIC PROCEDURES'.