

SLURP1 Antibody (monoclonal) (M06)

Mouse monoclonal antibody raised against a partial recombinant SLURP1.

Catalog # AT3935a

Product Information

Application	WB, IP, E
Primary Accession	P55000
Other Accession	NM_020427
Reactivity	Human
Host	mouse
Clonality	monoclonal
Isotype	IgG2a Kappa
Clone Names	4D1
Calculated MW	11186

Additional Information

Gene ID	57152
Other Names	Secreted Ly-6/uPAR-related protein 1, SLURP-1, ARS component B, ARS(component B)-81/S, Anti-neoplastic urinary protein, ANUP, SLURP1, ARS
Target/Specificity	SLURP1 (NP_065160, 25 a.a. ~ 102 a.a) partial recombinant protein with GST tag. MW of the GST tag alone is 26 KDa.
Dilution	WB~~1:500~1000 IP~~N/A E~~N/A
Format	Clear, colorless solution in phosphate buffered saline, pH 7.2 .
Storage	Store at -20°C or lower. Aliquot to avoid repeated freezing and thawing.
Precautions	SLURP1 Antibody (monoclonal) (M06) is for research use only and not for use in diagnostic or therapeutic procedures.

Background

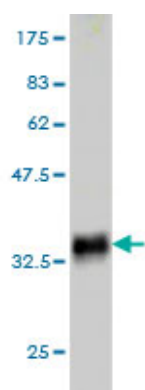
The protein encoded by this gene is a member of the Ly6/uPAR family but lacks a GPI-anchoring signal sequence. It is thought that this secreted protein contains antitumor activity. Mutations in this gene have been associated with Mal de Meleda, a rare autosomal recessive skin disorder. This gene maps to the same chromosomal region as several members of the Ly6/uPAR family of glycoprotein receptors.

References

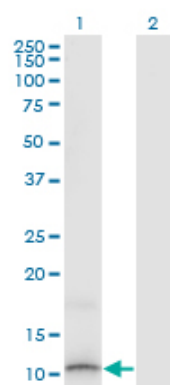
1.Down-regulation of secreted lymphocyte antigen-6/urokinase-type plasminogen activator receptor-related peptide-1 (SLURP-1), an endogenous allosteric alpha7 nicotinic acetylcholine receptor modulator, in murine

and human asthmatic conditions. Narumoto O, Horiguchi K, Horiguchi S, Moriwaki Y, Takano-Ohmuro H, Shoji S, Misawa H, Yamashita N, Nagase T, Kawashima K, Yamashita N. *Biochem Biophys Res Commun*. 2010 Jul 8. [Epub ahead of print]

Images

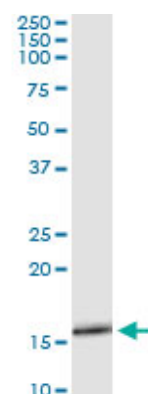


Antibody Reactive Against Recombinant Protein. Western Blot detection against Immunogen (34.32 KDa) .

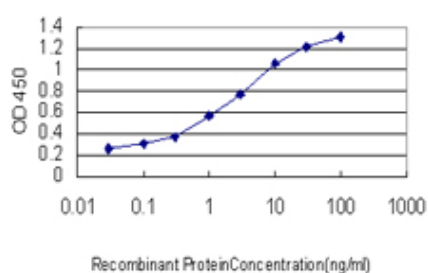


Western Blot analysis of SLURP1 expression in transfected 293T cell line by SLURP1 monoclonal antibody (M06), clone 4D1.

Lane 1: SLURP1 transfected lysate (11.2 KDa).
Lane 2: Non-transfected lysate.



Immunoprecipitation of SLURP1 transfected lysate using anti-SLURP1 monoclonal antibody and Protein A Magnetic Bead ([U0007](#)), and immunoblotted with SLURP1 MaxPab rabbit polyclonal antibody.



Detection limit for recombinant GST tagged SLURP1 is approximately 0.1 ng/ml as a capture antibody.

Please note: All products are 'FOR RESEARCH USE ONLY. NOT FOR USE IN DIAGNOSTIC OR THERAPEUTIC PROCEDURES'.