

# SMAD3 Antibody (monoclonal) (M09)

Mouse monoclonal antibody raised against a partial recombinant SMAD3.

Catalog # AT3941a

## Product Information

---

<b>Application</b>	WB, IF, E
<b>Primary Accession</b>	<a href="#">P84022</a>
<b>Other Accession</b>	<a href="#">NM_005902</a>
<b>Reactivity</b>	Human
<b>Host</b>	mouse
<b>Clonality</b>	monoclonal
<b>Isotype</b>	IgG2a Kappa
<b>Clone Names</b>	1C11
<b>Calculated MW</b>	48081

## Additional Information

---

<b>Gene ID</b>	4088
<b>Other Names</b>	Mothers against decapentaplegic homolog 3, MAD homolog 3, Mad3, Mothers against DPP homolog 3, hMAD-3, JV15-2, SMAD family member 3, SMAD 3, Smad3, hSMAD3, SMAD3, MADH3
<b>Target/Specificity</b>	SMAD3 (NP_005893, 1 a.a. ~ 110 a.a) partial recombinant protein with GST tag. MW of the GST tag alone is 26 KDa.
<b>Dilution</b>	WB~~1:500~1000 IF~~1:50~200 E~~N/A
<b>Format</b>	Clear, colorless solution in phosphate buffered saline, pH 7.2 .
<b>Storage</b>	Store at -20°C or lower. Aliquot to avoid repeated freezing and thawing.
<b>Precautions</b>	SMAD3 Antibody (monoclonal) (M09) is for research use only and not for use in diagnostic or therapeutic procedures.

## Background

---

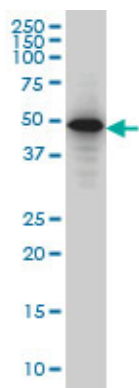
The protein encoded by this gene belongs to the SMAD, a family of proteins similar to the gene products of the Drosophila gene 'mothers against decapentaplegic' (Mad) and the C. elegans gene Sma. SMAD proteins are signal transducers and transcriptional modulators that mediate multiple signaling pathways. This protein functions as a transcriptional modulator activated by transforming growth factor-beta and is thought to play a role in the regulation of carcinogenesis.

## References

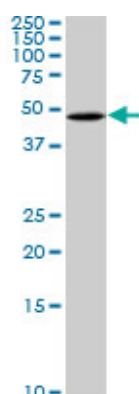
---

Common genetic polymorphisms in Moyamoya and atherosclerotic disease in Europeans. Roder C, et al. Childs Nerv Syst, 2010 Aug 6. PMID 20694560. Maternal genes and facial clefts in offspring: a comprehensive search for genetic associations in two population-based cleft studies from Scandinavia. Jugessur A, et al. PLoS One, 2010 Jul 9. PMID 20634891. Genetic variation in the SMAD3 gene is associated with hip and knee osteoarthritis. Valdes AM, et al. Arthritis Rheum, 2010 Aug. PMID 20506137. Single-nucleotide polymorphisms in SMAD3 are associated with chronic obstructive pulmonary disease. Yang T, et al. Exp Biol Med (Maywood), 2010 May. PMID 20463300. Personalized smoking cessation: interactions between nicotine dose, dependence and quit-success genotype score. Rose JE, et al. Mol Med, 2010 Jul-Aug. PMID 20379614.

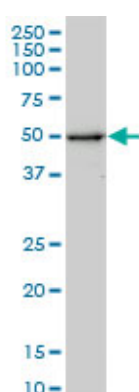
## Images



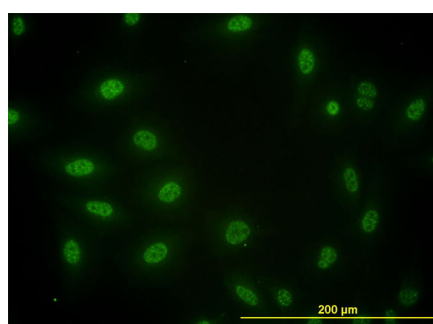
SMAD3 monoclonal antibody (M09), clone 1C11 Western Blot analysis of SMAD3 expression in HeLa S3 NE ( Cat # L013V3 ).



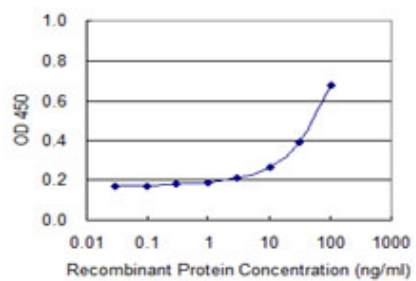
SMAD3 monoclonal antibody (M09), clone 1C11. Western Blot analysis of SMAD3 expression in SJCRH30 ( (Cat # AT3941a )



SMAD3 monoclonal antibody (M09), clone 1C11. Western Blot analysis of SMAD3 expression in Jurkat ( (Cat # AT3941a )



Immunofluorescence of monoclonal antibody to SMAD3 on HeLa cell. [antibody concentration 10 ug/ml]



Detection limit for recombinant GST tagged SMAD3 is approximately 3ng/ml as a capture antibody.

Please note: All products are 'FOR RESEARCH USE ONLY. NOT FOR USE IN DIAGNOSTIC OR THERAPEUTIC PROCEDURES'.