

# SMAD5 Antibody (monoclonal) (M03)

Mouse monoclonal antibody raised against a partial recombinant SMAD5.

Catalog # AT3945a

## Product Information

---

<b>Application</b>	WB, IF, E
<b>Primary Accession</b>	<a href="#">Q99717</a>
<b>Other Accession</b>	<a href="#">BC009682</a>
<b>Reactivity</b>	Human
<b>Host</b>	mouse
<b>Clonality</b>	monoclonal
<b>Isotype</b>	IgG2a Kappa
<b>Clone Names</b>	3A10
<b>Calculated MW</b>	52258

## Additional Information

---

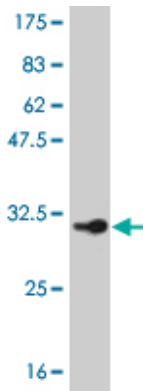
<b>Gene ID</b>	4090
<b>Other Names</b>	Mothers against decapentaplegic homolog 5, MAD homolog 5, Mothers against DPP homolog 5, JV5-1, SMAD family member 5, SMAD 5, Smad5, hSmad5, SMAD5, MADH5
<b>Target/Specificity</b>	SMAD5 (AAH09682, 105 a.a. ~ 182 a.a) partial recombinant protein with GST tag. MW of the GST tag alone is 26 KDa.
<b>Dilution</b>	WB~~1:500~1000 IF~~1:50~200 E~~N/A
<b>Format</b>	Clear, colorless solution in phosphate buffered saline, pH 7.2 .
<b>Storage</b>	Store at -20°C or lower. Aliquot to avoid repeated freezing and thawing.
<b>Precautions</b>	SMAD5 Antibody (monoclonal) (M03) is for research use only and not for use in diagnostic or therapeutic procedures.

## References

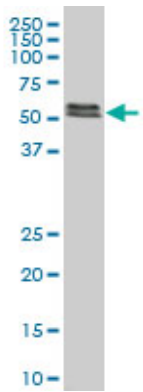
---

Smad-dependent and smad-independent induction of id1 by prostacyclin analogues inhibits proliferation of pulmonary artery smooth muscle cells in vitro and in vivo. Yang J, et al. Circ Res, 2010 Jul 23. PMID 20522807. Alternative splicing of SMADs in differentiation and tissue homeostasis. Tao S, et al. Dev Growth Differ, 2010 May. PMID 20148926. Smad1-Smad5 ovarian conditional knockout mice develop a disease profile similar to the juvenile form of human granulosa cell tumors. Middlebrook BS, et al. Endocrinology, 2009 Dec. PMID 19819941. BMP4-Smad signaling pathway mediates adriamycin-induced premature senescence in lung cancer cells. Su D, et al. J Biol Chem, 2009 May 1. PMID 19269967. Investigation of DNA polymorphisms in SMAD genes for genetic predisposition to diabetic nephropathy in patients with type 1

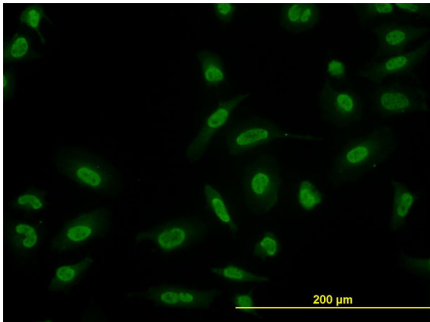
Images



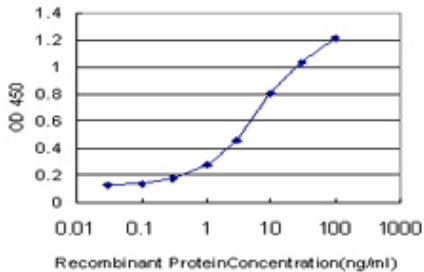
Antibody Reactive Against Recombinant Protein. Western Blot detection against Immunogen (34.21 KDa) .



SMAD5 monoclonal antibody (M03), clone 3A10 Western Blot analysis of SMAD5 expression in HeLa ( (Cat # AT3945a )



Immunofluorescence of monoclonal antibody to SMAD5 on HeLa cell. [antibody concentration 10 ug/ml]



Detection limit for recombinant GST tagged SMAD5 is approximately 0.3ng/ml as a capture antibody.

Please note: All products are 'FOR RESEARCH USE ONLY. NOT FOR USE IN DIAGNOSTIC OR THERAPEUTIC PROCEDURES'.