

SMARCB1 Antibody (monoclonal) (M01)

Mouse monoclonal antibody raised against a partial recombinant SMARCB1.

Catalog # AT3950a

Product Information

Application	WB, IHC, E
Primary Accession	Q12824
Other Accession	NM_003073
Reactivity	Human, Mouse, Rat
Host	mouse
Clonality	monoclonal
Isotype	IgG1 Kappa
Clone Names	3E11
Calculated MW	44141

Additional Information

Gene ID	6598
Other Names	SWI/SNF-related matrix-associated actin-dependent regulator of chromatin subfamily B member 1, BRG1-associated factor 47, BAF47, Integrase interactor 1 protein, SNF5 homolog, hSNF5, SMARCB1, BAF47, INI1, SNF5L1
Target/Specificity	SMARCB1 (NP_003064, 81 a.a. ~ 180 a.a) partial recombinant protein with GST tag. MW of the GST tag alone is 26 KDa.
Dilution	WB~~1:500~1000 IHC~~1:100~500 E~~N/A
Format	Clear, colorless solution in phosphate buffered saline, pH 7.2 .
Storage	Store at -20°C or lower. Aliquot to avoid repeated freezing and thawing.
Precautions	SMARCB1 Antibody (monoclonal) (M01) is for research use only and not for use in diagnostic or therapeutic procedures.

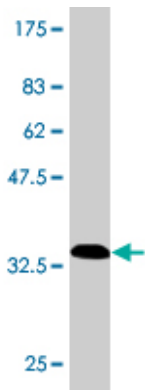
Background

The protein encoded by this gene is part of a complex that relieves repressive chromatin structures, allowing the transcriptional machinery to access its targets more effectively. The encoded nuclear protein may also bind to and enhance the DNA joining activity of HIV-1 integrase. This gene has been found to be a tumor suppressor, and mutations in it have been associated with malignant rhabdoid tumors. Two transcript variants encoding different isoforms have been found for this gene.

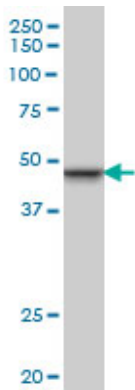
References

1.IGFBP7 Is Not Required for B-RAF-Induced Melanocyte Senescence.Scurr LL, Pupo GM, Becker TM, Lai K, Schrama D, Haferkamp S, Irvine M, Scolyer RA, Mann GJ, Becker JC, Kefford RF, Rizos H.Cell. 2010 May 14;141(4):717-27.

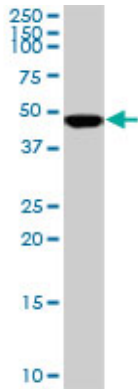
Images



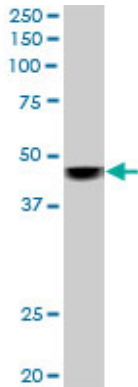
Antibody Reactive Against Recombinant Protein.Western Blot detection against Immunogen (36.74 KDa) .



SMARCB1 monoclonal antibody (M01), clone 3E10
Western Blot analysis of SMARCB1 expression in PC-12 (Cat # AT3950a)

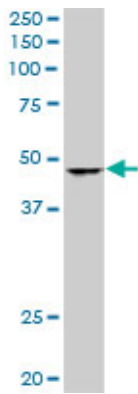


SMARCB1 monoclonal antibody (M01), clone 3E10.
Western Blot analysis of SMARCB1 expression in Hela S3 NE (Cat # AT3950a)

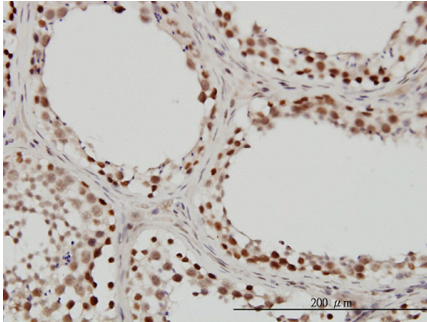


SMARCB1 monoclonal antibody (M01), clone 3E10.
Western Blot analysis of SMARCB1 expression in Raw 264.7 (Cat # AT3950a)

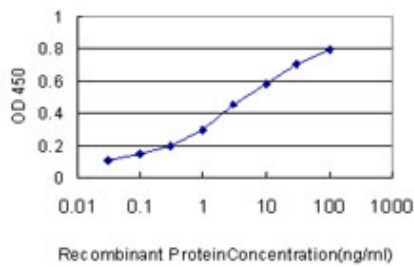
SMARCB1 monoclonal antibody (M01), clone 3E10.



Western Blot analysis of SMARCB1 expression in NIH/3T3
(Cat # AT3950a)



Immunoperoxidase of monoclonal antibody to SMARCB1
on formalin-fixed paraffin-embedded human testis.
[antibody concentration 3 ug/ml]



Detection limit for recombinant GST tagged SMARCB1 is
approximately 0.03ng/ml as a capture antibody.

Citations

- [Rhabdoid papillary meningioma: a clinicopathologic case series study.](#)

Please note: All products are 'FOR RESEARCH USE ONLY. NOT FOR USE IN DIAGNOSTIC OR THERAPEUTIC PROCEDURES'.