

# SMARCB1 Antibody (monoclonal) (M04)

Mouse monoclonal antibody raised against a partial recombinant SMARCB1.

Catalog # AT3951a

## Product Information

---

<b>Application</b>	WB
<b>Primary Accession</b>	<a href="#">Q12824</a>
<b>Other Accession</b>	<a href="#">NM_003073</a>
<b>Reactivity</b>	Human
<b>Host</b>	mouse
<b>Clonality</b>	monoclonal
<b>Isotype</b>	IgG2b Kappa
<b>Clone Names</b>	3H3
<b>Calculated MW</b>	44141

## Additional Information

---

<b>Gene ID</b>	6598
<b>Other Names</b>	SWI/SNF-related matrix-associated actin-dependent regulator of chromatin subfamily B member 1, BRG1-associated factor 47, BAF47, Integrase interactor 1 protein, SNF5 homolog, hSNF5, SMARCB1, BAF47, INI1, SNF5L1
<b>Target/Specificity</b>	SMARCB1 (NP_003064, 81 a.a. ~ 180 a.a) partial recombinant protein with GST tag. MW of the GST tag alone is 26 KDa.
<b>Dilution</b>	WB~~1:500~1000
<b>Format</b>	Clear, colorless solution in phosphate buffered saline, pH 7.2 .
<b>Storage</b>	Store at -20°C or lower. Aliquot to avoid repeated freezing and thawing.
<b>Precautions</b>	SMARCB1 Antibody (monoclonal) (M04) is for research use only and not for use in diagnostic or therapeutic procedures.

## Background

---

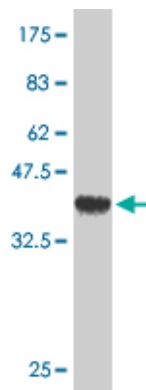
The protein encoded by this gene is part of a complex that relieves repressive chromatin structures, allowing the transcriptional machinery to access its targets more effectively. The encoded nuclear protein may also bind to and enhance the DNA joining activity of HIV-1 integrase. This gene has been found to be a tumor suppressor, and mutations in it have been associated with malignant rhabdoid tumors. Two transcript variants encoding different isoforms have been found for this gene.

## References

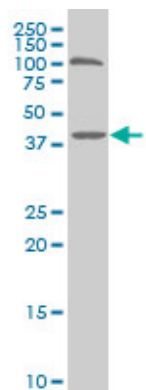
---

Variation at the NFATC2 Locus Increases the Risk of Thiazolinedione-Induced Edema in the Diabetes REduction Assessment with ramipril and rosiglitazone Medication (DREAM) Study. Bailey SD, et al. Diabetes Care, 2010 Jul 13. PMID 20628086. SMARCB1 mutations are not a common cause of multiple meningiomas. Hadfield KD, et al. J Med Genet, 2010 Aug. PMID 20472658. Epithelioid versus rhabdoid glioblastomas are distinguished by monosomy 22 and immunohistochemical expression of INI-1 but not claudin 6. Kleinschmidt-DeMasters BK, et al. Am J Surg Pathol, 2010 Mar. PMID 20118769. Rapid detection of SMARCB1 sequence variation using high resolution melting. Dagar V, et al. BMC Cancer, 2009 Dec 13. PMID 20003390. Gene-centric association signals for lipids and apolipoproteins identified via the HumanCVD BeadChip. Talmud PJ, et al. Am J Hum Genet, 2009 Nov. PMID 19913121.

## Images



Antibody Reactive Against Recombinant Protein. Western Blot detection against Immunogen (36.74 KDa) .



SMARCB1 monoclonal antibody (M04), clone 3H3 Western Blot analysis of SMARCB1 expression in HeLa S3 NE (Cat # AT3951a )

Please note: All products are 'FOR RESEARCH USE ONLY. NOT FOR USE IN DIAGNOSTIC OR THERAPEUTIC PROCEDURES'.