

SMARCD3 Antibody (monoclonal) (M01)

Mouse monoclonal antibody raised against a partial recombinant SMARCD3.

Catalog # AT3954a

Product Information

Application	WB, IF, E
Primary Accession	Q6STE5
Other Accession	NM_001003801
Reactivity	Human
Host	mouse
Clonality	monoclonal
Isotype	IgG2a Kappa
Clone Names	1G6
Calculated MW	55016

Additional Information

Gene ID	6604
Other Names	SWI/SNF-related matrix-associated actin-dependent regulator of chromatin subfamily D member 3, 60 kDa BRG-1/Brm-associated factor subunit C, BRG1-associated factor 60C, BAF60C, SMARCD3, BAF60C
Target/Specificity	SMARCD3 (NP_001003801, 385 a.a. ~ 483 a.a) partial recombinant protein with GST tag. MW of the GST tag alone is 26 KDa.
Dilution	WB~~1:500~1000 IF~~1:50~200 E~~N/A
Format	Clear, colorless solution in phosphate buffered saline, pH 7.2 .
Storage	Store at -20°C or lower. Aliquot to avoid repeated freezing and thawing.
Precautions	SMARCD3 Antibody (monoclonal) (M01) is for research use only and not for use in diagnostic or therapeutic procedures.

Background

The protein encoded by this gene is a member of the SWI/SNF family of proteins, whose members display helicase and ATPase activities and which are thought to regulate transcription of certain genes by altering the chromatin structure around those genes. The encoded protein is part of the large ATP-dependent chromatin remodeling complex SNF/SWI and has sequence similarity to the yeast Swp73 protein. Multiple alternatively spliced transcript variants have been found for this gene, but the biological validity of some variants has not been determined.

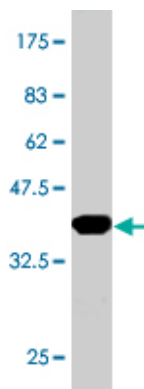
References

1.Directing cardiomyogenic differentiation of human pluripotent stem cells by plasmid-based transient overexpression of cardiac transcription factors.Hartung S, Schwanke K, Haase A, David R, Franz WM, Martin U, Zweigerdt R.Stem Cells Dev. 2013 Apr 1;22(7):1112-25. doi: 10.1089/scd.2012.0351. Epub 2013 Jan 18.

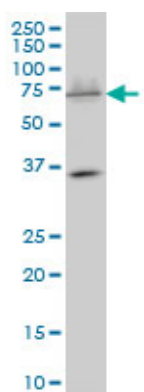
2.Massively parallel sequencing identifies the gene Megf8 with ENU-induced mutation causing heterotaxy.Zhang Z, Alpert D, Francis R, Chatterjee B, Yu Q, Tansey T, Sabol SL, Cui C, Bai Y, Koriabine M, Yoshinaga Y, Cheng JF, Chen F, Martin J, Schackwitz W, Gunn TM, Kramer KL, De Jong PJ, Pennacchio LA, Lo CW.Proc Natl Acad Sci U S A. 2009 Mar 3;106(9):3219-24. Epub 2009 Feb 13.

3.The core component of the mammalian SWI/SNF complex SMARCD3/BAF60c is a coactivator for the nuclear retinoic acid receptor.Flajollet S, Lefebvre B, Cudejko C, Staels B, Lefebvre P.Mol Cell Endocrinol. 2007 May 30;270(1-2):23-32. Epub 2007 Feb 15.

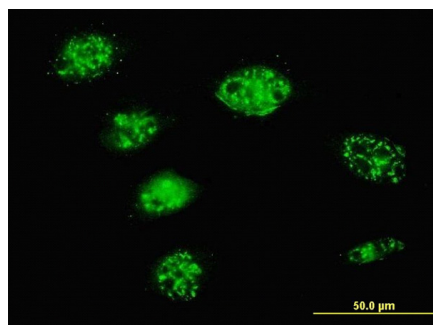
Images



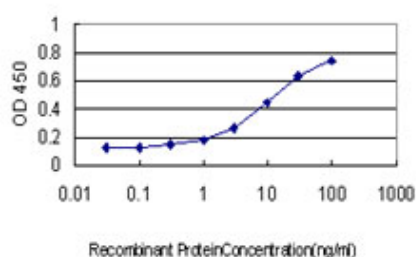
Antibody Reactive Against Recombinant Protein.Western Blot detection against Immunogen (36.63 KDa) .



SMARCD3 monoclonal antibody (M01), clone 1G6
Western Blot analysis of SMARCD3 expression in K-562 (Cat # AT3954a)



Immunofluorescence of monoclonal antibody to SMARCD3 on HeLa cell. [antibody concentration 10 ug/ml]



Detection limit for recombinant GST tagged SMARCD3 is approximately 0.3ng/ml as a capture antibody.

Please note: All products are 'FOR RESEARCH USE ONLY. NOT FOR USE IN DIAGNOSTIC OR THERAPEUTIC PROCEDURES'.