

SMPDL3B Antibody (monoclonal) (M01)

Mouse monoclonal antibody raised against a partial recombinant SMPDL3B.

Catalog # AT3963a

Product Information

Application	WB, E
Primary Accession	Q92485
Other Accession	NM_001009568
Reactivity	Human
Host	mouse
Clonality	monoclonal
Isotype	IgG3 Kappa
Clone Names	5.0E+12
Calculated MW	50814

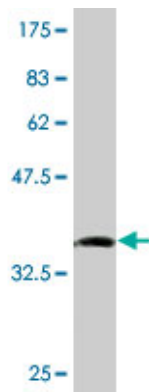
Additional Information

Gene ID	27293
Other Names	Acid sphingomyelinase-like phosphodiesterase 3b, ASM-like phosphodiesterase 3b, 314-, SMPDL3B, ASML3B
Target/Specificity	SMPDL3B (NP_001009568, 274 a.a. ~ 372 a.a) partial recombinant protein with GST tag. MW of the GST tag alone is 26 KDa.
Dilution	WB~~1:500~1000 E~~N/A
Format	Clear, colorless solution in phosphate buffered saline, pH 7.2 .
Storage	Store at -20°C or lower. Aliquot to avoid repeated freezing and thawing.
Precautions	SMPDL3B Antibody (monoclonal) (M01) is for research use only and not for use in diagnostic or therapeutic procedures.

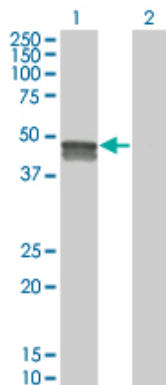
References

Identification of intrahepatic cholangiocarcinoma related genes by comparison with normal liver tissues using expressed sequence tags. Wang AG, et al. Biochem Biophys Res Commun, 2006 Jul 7. PMID 16712791. The DNA sequence and biological annotation of human chromosome 1. Gregory SG, et al. Nature, 2006 May 18. PMID 16710414. The status, quality, and expansion of the NIH full-length cDNA project: the Mammalian Gene Collection (MGC). Gerhard DS, et al. Genome Res, 2004 Oct. PMID 15489334. Generation and initial analysis of more than 15,000 full-length human and mouse cDNA sequences. Strausberg RL, et al. Proc Natl Acad Sci U S A, 2002 Dec 24. PMID 12477932.

Images

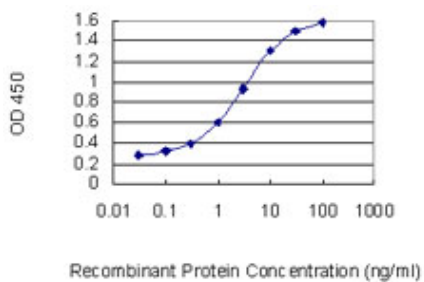


Antibody Reactive Against Recombinant Protein. Western Blot detection against Immunogen (36.63 KDa) .



Western Blot analysis of SMPDL3B expression in transfected 293T cell line by SMPDL3B monoclonal antibody (M01), clone 5E12.

Lane 1: SMPDL3B transfected lysate(41.7 KDa).
Lane 2: Non-transfected lysate.



Detection limit for recombinant GST tagged SMPDL3B is 0.03 ng/ml as a capture antibody.

Please note: All products are 'FOR RESEARCH USE ONLY. NOT FOR USE IN DIAGNOSTIC OR THERAPEUTIC PROCEDURES'.