

SMS Antibody (monoclonal) (M01)

Mouse monoclonal antibody raised against a full length recombinant SMS.

Catalog # AT3964a

Product Information

Application	WB, E
Primary Accession	P52788
Other Accession	BC009898
Reactivity	Human
Host	mouse
Clonality	monoclonal
Isotype	IgG2a kappa
Clone Names	1G6
Calculated MW	41268

Additional Information

Gene ID	6611
Other Names	Spermine synthase, SPMSY, Spermidine aminopropyltransferase, SMS
Target/Specificity	SMS (AAH09898.1, 1 a.a. ~ 366 a.a) full-length recombinant protein with GST tag. MW of the GST tag alone is 26 KDa.
Dilution	WB~~1:500~1000 E~~N/A
Format	Clear, colorless solution in phosphate buffered saline, pH 7.2 .
Storage	Store at -20°C or lower. Aliquot to avoid repeated freezing and thawing.
Precautions	SMS Antibody (monoclonal) (M01) is for research use only and not for use in diagnostic or therapeutic procedures.

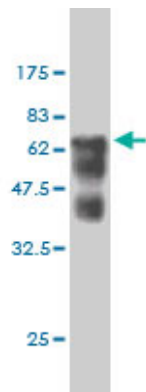
Background

The protein encoded by this gene belongs to the spermidine/spermine synthases family. This gene encodes an ubiquitous enzyme of polyamine metabolism.

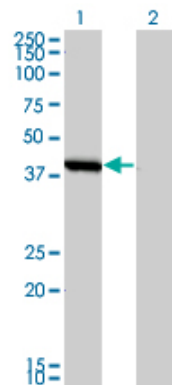
References

1.A Y328C missense mutation in spermine synthase causes a mild form of Snyder-Robinson syndrome.Zhang Z, Norris J, Kalscheuer V, Wood T, Wang L, Schwartz C, Alexov E, Van Esch HHum Mol Genet. 2013 May 31.

Images

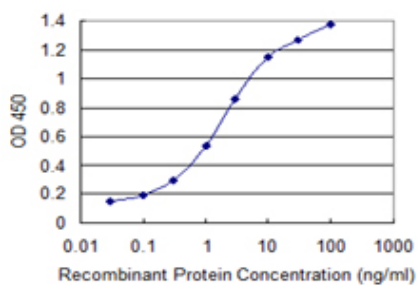


Antibody Reactive Against Recombinant Protein. Western Blot detection against Immunogen (66 KDa) .



Western Blot analysis of SMS expression in transfected 293T cell line by SMS monoclonal antibody (M01), clone 1G6.

Lane 1: SMS transfected lysate(41.268 KDa).
Lane 2: Non-transfected lysate.



Detection limit for recombinant GST tagged SMS is 0.03 ng/ml as a capture antibody.

Please note: All products are 'FOR RESEARCH USE ONLY. NOT FOR USE IN DIAGNOSTIC OR THERAPEUTIC PROCEDURES'.