

# SMURF1 Antibody (monoclonal) (M01)

Mouse monoclonal antibody raised against a partial recombinant SMURF1.

Catalog # AT3966a

## Product Information

---

Application	WB, IHC, IF, IP, E
Primary Accession	<a href="#">Q9HCE7</a>
Other Accession	<a href="#">NM_020429</a>
Reactivity	Human
Host	mouse
Clonality	monoclonal
Isotype	IgG2a Kappa
Clone Names	1D7
Calculated MW	86114

## Additional Information

---

Gene ID	57154
Other Names	E3 ubiquitin-protein ligase SMURF1, hSMURF1, 632-, SMAD ubiquitination regulatory factor 1, SMAD-specific E3 ubiquitin-protein ligase 1, SMURF1, KIAA1625
Target/Specificity	SMURF1 (NP_065162, 165 a.a. ~ 268 a.a) partial recombinant protein with GST tag. MW of the GST tag alone is 26 KDa.
Dilution	WB~~1:500~1000 IHC~~1:100~500 IF~~1:50~200 IP~~N/A E~~N/A
Format	Clear, colorless solution in phosphate buffered saline, pH 7.2 .
Storage	Store at -20°C or lower. Aliquot to avoid repeated freezing and thawing.
Precautions	SMURF1 Antibody (monoclonal) (M01) is for research use only and not for use in diagnostic or therapeutic procedures.

## Background

---

This gene encodes a ubiquitin ligase that is specific for receptor-regulated SMAD proteins in the bone morphogenetic protein (BMP) pathway. A similar protein in *Xenopus* is involved in embryonic pattern formation. Alternative splicing results in multiple transcript variants encoding different isoforms. An additional transcript variant has been identified, but its full length sequence has not been determined.

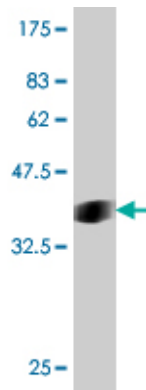
## References

---

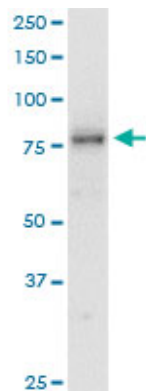
1.Impaired phosphorylation and ubiquitination by P70 S6 kinase (P70S6K) and Smad ubiquitination

regulatory factor 1 (Smurf1) promotes Tribbles homolog 2 (TRIB2) stability and carcinogenic property in liver cancer. Wang J, Zhang Y, Weng W, Qiao Y, Ma L, Xiao W, Yu Y, Pan Q, Sun FJ Biol Chem. 2013 Oct 2.2.Smurf1 ubiquitin ligase causes downregulation of BMP receptors and is induced in monocrotaline and hypoxia models of pulmonary arterial hypertension. Murakami K, Mathew R, Huang J, Farahani R, Peng H, Olson SC, Etlinger JD. Exp Biol Med (Maywood). 2010 Jul 1;235(7):805-13.

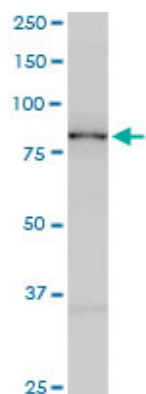
## Images



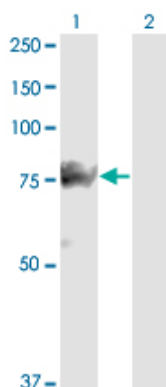
Antibody Reactive Against Recombinant Protein. Western Blot detection against Immunogen (37.18 kDa) .



SMURF1 monoclonal antibody (M01), clone 1D7. Western Blot analysis of SMURF1 expression in HeLa.

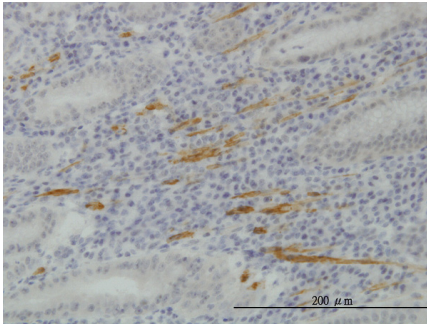


SMURF1 monoclonal antibody (M01), clone 1D7. Western Blot analysis of SMURF1 expression in HepG2.

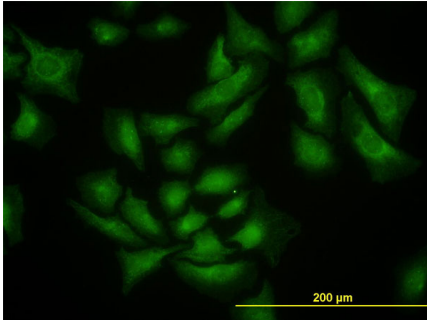


Western Blot analysis of SMURF1 expression in transfected 293T cell line by SMURF1 monoclonal antibody (M01), clone 1D7.

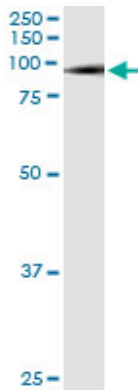
Lane 1: SMURF1 transfected lysate(83.4 kDa).  
Lane 2: Non-transfected lysate.



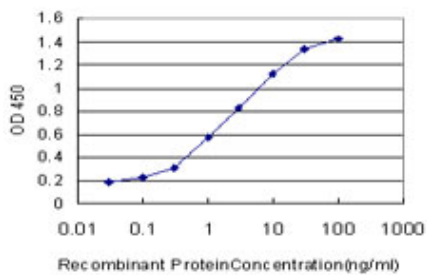
Immunoperoxidase of monoclonal antibody to SMURF1 on formalin-fixed paraffin-embedded human stomach. [antibody concentration 2 µg/ml]



Immunofluorescence of monoclonal antibody to SMURF1 on HeLa cell. [antibody concentration 10 µg/ml]



Immunoprecipitation of SMURF1 transfected lysate using anti-SMURF1 monoclonal antibody and Protein A Magnetic Bead ([U0007](#)), and immunoblotted with SMURF1 MaxPab rabbit polyclonal antibody.



Detection limit for recombinant GST tagged SMURF1 is approximately 0.1 ng/ml as a capture antibody.

Please note: All products are 'FOR RESEARCH USE ONLY. NOT FOR USE IN DIAGNOSTIC OR THERAPEUTIC PROCEDURES'.