

SNAI2 Antibody (monoclonal) (M05)

Mouse monoclonal antibody raised against a partial recombinant SNAI2.

Catalog # AT3970a

Product Information

Application	WB, IF
Primary Accession	O43623
Other Accession	NM_003068
Reactivity	Human, Mouse, Rat
Host	mouse
Clonality	monoclonal
Isotype	IgG3 Kappa
Clone Names	3C12
Calculated MW	29986

Additional Information

Gene ID	6591
Other Names	Zinc finger protein SNAI2, Neural crest transcription factor Slug, Protein snail homolog 2, SNAI2, SLUG, SLUGH
Target/Specificity	SNAI2 (NP_003059, 97 a.a. ~ 169 a.a) partial recombinant protein with GST tag. MW of the GST tag alone is 26 KDa.
Dilution	WB~~1:500~1000 IF~~1:50~200
Format	Clear, colorless solution in phosphate buffered saline, pH 7.2 .
Storage	Store at -20°C or lower. Aliquot to avoid repeated freezing and thawing.
Precautions	SNAI2 Antibody (monoclonal) (M05) is for research use only and not for use in diagnostic or therapeutic procedures.

Background

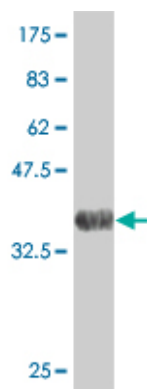
This gene encodes a member of the Snail family of C2H2-type zinc finger transcription factors. The encoded protein acts as a transcriptional repressor that binds to E-box motifs and is also likely to repress E-cadherin transcription in breast carcinoma. This protein is involved in epithelial-mesenchymal transitions and has antiapoptotic activity. Mutations in this gene may be associated with sporadic cases of neural tube defects.

References

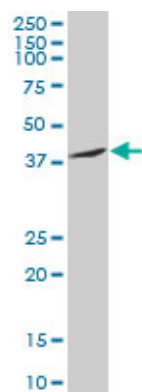
Maternal genes and facial clefts in offspring: a comprehensive search for genetic associations in two population-based cleft studies from Scandinavia. Jugessur A, et al. PLoS One, 2010 Jul 9. PMID

20634891.SNAI2/Slug promotes growth and invasion in human gliomas. Yang HW, et al. BMC Cancer, 2010 Jun 17. PMID 20565806.Clinicopathologic significance of slug expression in human intrahepatic cholangiocarcinoma. Zhang KJ, et al. World J Gastroenterol, 2010 May 28. PMID 20503457.SLUG: a new target of lymphoid enhancer factor-1 in human osteoblasts. Lambertini E, et al. BMC Mol Biol, 2010 Feb 3. PMID 20128911.ERalpha signaling through slug regulates E-cadherin and EMT. Ye Y, et al. Oncogene, 2010 Mar 11. PMID 20101232.

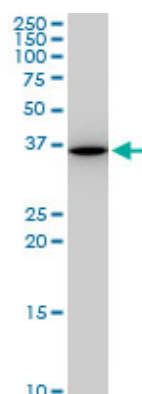
Images



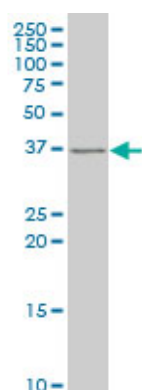
Antibody Reactive Against Recombinant Protein. Western Blot detection against Immunogen (33.77 KDa) .



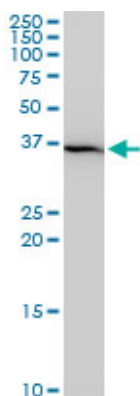
SNAI2 monoclonal antibody (M05), clone 3C12. Western Blot analysis of SNAI2 expression in human liver.



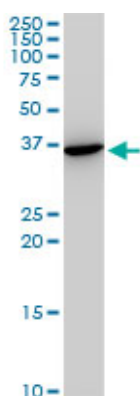
SNAI2 monoclonal antibody (M05), clone 3C12. Western Blot analysis of SNAI2 expression in PC-12 (Cat # AT3970a)



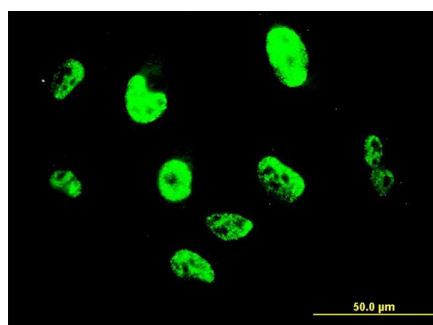
SNAI2 monoclonal antibody (M05), clone 3C12 Western Blot analysis of SNAI2 expression in HepG2 (Cat # AT3970a)



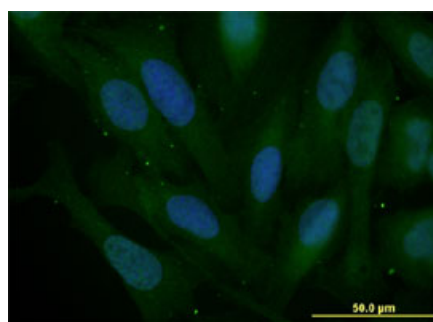
SNAI2 monoclonal antibody (M05), clone 3C12. Western Blot analysis of SNAI2 expression in Raw 264.7((Cat # AT3970a)



SNAI2 monoclonal antibody (M05), clone 3C12. Western Blot analysis of SNAI2 expression in NIH/3T3((Cat # AT3970a)



Immunofluorescence of monoclonal antibody to SNAI2 on HepG2 cell. [antibody concentration 10 ug/ml]



Immunofluorescence of monoclonal antibody to SNAI2 on U-2 OS cell. [antibody concentration 10 ug/ml]

Please note: All products are 'FOR RESEARCH USE ONLY. NOT FOR USE IN DIAGNOSTIC OR THERAPEUTIC PROCEDURES'.