

SNCB Antibody (monoclonal) (M07)

Mouse monoclonal antibody raised against a full-length recombinant SNCB.

Catalog # AT3979a

Product Information

Application	WB, E
Primary Accession	Q16143
Other Accession	BC002902
Reactivity	Human
Host	mouse
Clonality	monoclonal
Isotype	IgG2a Kappa
Clone Names	3H4
Calculated MW	14288

Additional Information

Gene ID	6620
Other Names	Beta-synuclein, SNCB
Target/Specificity	SNCB (AAH02902, 1 a.a. ~ 134 a.a) full-length recombinant protein with GST tag. MW of the GST tag alone is 26 KDa.
Dilution	WB~~1:500~1000 E~~N/A
Format	Clear, colorless solution in phosphate buffered saline, pH 7.2 .
Storage	Store at -20°C or lower. Aliquot to avoid repeated freezing and thawing.
Precautions	SNCB Antibody (monoclonal) (M07) is for research use only and not for use in diagnostic or therapeutic procedures.

Background

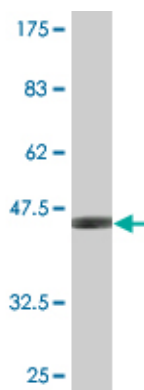
The protein encoded by this gene is highly homologous to alpha-synuclein. These proteins are abundantly expressed in the brain and putatively inhibit phospholipase D2 selectively. The encoded protein, which may play a role in neuronal plasticity, is abundant in neurofibrillary lesions of patients with Alzheimer disease. This protein has been shown to be highly expressed in the substantia nigra of the brain, a region of neuronal degeneration in patients with Parkinson disease; however, no direct relation to Parkinson disease has been established. Two transcript variants encoding the same protein have been found for this gene.

References

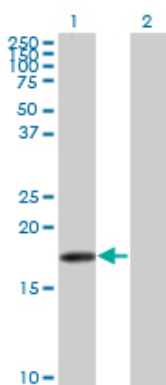
Association of alpha-, beta-, and gamma-Synuclein with diffuse lewy body disease. Nishioka K, et al. Arch

Neurol, 2010 Aug. PMID 20697047. Expression of alpha-, beta- and gamma-synuclein in colorectal cancer, and potential clinical significance in progression of the disease. Ye Q, et al. Oncol Rep, 2010 Feb. PMID 20043104. Molecular determinants of the aggregation behavior of alpha- and beta-synuclein. Rivers RC, et al. Protein Sci, 2008 May. PMID 18436957. Spectroscopic and functional characterization of human beta-synuclein. Lee J, et al. Protein Pept Lett, 2007. PMID 18221001. An investigation into the lipid-binding properties of alpha-, beta- and gamma-synucleins in human brain and cerebrospinal fluid. Salem SA, et al. Brain Res, 2007 Sep 19. PMID 17692832.

Images

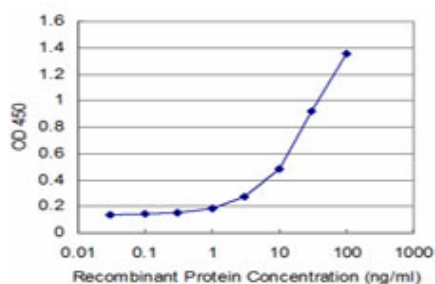


Antibody Reactive Against Recombinant Protein. Western Blot detection against Immunogen (40.48 KDa) .



Western Blot analysis of SNCB expression in transfected 293T cell line by SNCB monoclonal antibody (M07), clone 3H4.

Lane 1: SNCB transfected lysate (14.3 KDa).
Lane 2: Non-transfected lysate.



Detection limit for recombinant GST tagged SNCB is approximately 1 ng/ml as a capture antibody.

Please note: All products are 'FOR RESEARCH USE ONLY. NOT FOR USE IN DIAGNOSTIC OR THERAPEUTIC PROCEDURES'.