

# SNF1LK2 Antibody (monoclonal) (M01)

Mouse monoclonal antibody raised against a partial recombinant SIK2.

Catalog # AT3981a

## Product Information

---

<b>Application</b>	WB
<b>Primary Accession</b>	<a href="#">Q9H0K1</a>
<b>Other Accession</b>	<a href="#">NM_015191</a>
<b>Reactivity</b>	Human
<b>Host</b>	mouse
<b>Clonality</b>	monoclonal
<b>Isotype</b>	IgG2a Kappa
<b>Clone Names</b>	4H6
<b>Calculated MW</b>	103915

## Additional Information

---

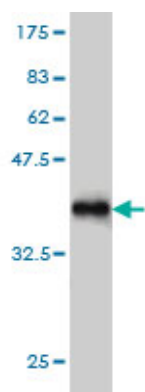
<b>Gene ID</b>	23235
<b>Other Names</b>	Serine/threonine-protein kinase SIK2, Qin-induced kinase, Salt-inducible kinase 2, SIK-2, Serine/threonine-protein kinase SNF1-like kinase 2, SIK2
<b>Target/Specificity</b>	SIK2 (NP_056006, 467 a.a. ~ 576 a.a) partial recombinant protein with GST tag. MW of the GST tag alone is 26 KDa.
<b>Dilution</b>	WB~~1:500~1000
<b>Format</b>	Clear, colorless solution in phosphate buffered saline, pH 7.2 .
<b>Storage</b>	Store at -20°C or lower. Aliquot to avoid repeated freezing and thawing.
<b>Precautions</b>	SNF1LK2 Antibody (monoclonal) (M01) is for research use only and not for use in diagnostic or therapeutic procedures.

## References

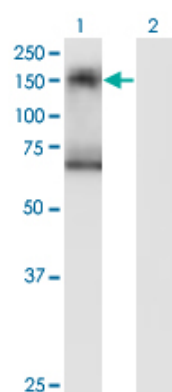
---

SIK2 is a centrosome kinase required for bipolar mitotic spindle formation that provides a potential target for therapy in ovarian cancer. Ahmed AA, et al. Cancer Cell, 2010 Aug 9. PMID 20708153. Personalized smoking cessation: interactions between nicotine dose, dependence and quit-success genotype score. Rose JE, et al. Mol Med, 2010 Jul-Aug. PMID 20379614. Amplification at 11q23 targets protein kinase SIK2 in diffuse large B-cell lymphoma. Nagel S, et al. Leuk Lymphoma, 2010 May. PMID 20367563. Toward a confocal subcellular atlas of the human proteome. Barbe L, et al. Mol Cell Proteomics, 2008 Mar. PMID 18029348. Identification of intrahepatic cholangiocarcinoma related genes by comparison with normal liver tissues using expressed sequence tags. Wang AG, et al. Biochem Biophys Res Commun, 2006 Jul 7. PMID 16712791.

## Images



Antibody Reactive Against Recombinant Protein. Western Blot detection against Immunogen (37.84 KDa) .



Western Blot analysis of SIK2 expression in transfected 293T cell line by SIK2 monoclonal antibody (M01), clone 4H6.

Lane 1: SIK2 transfected lysate (Predicted MW: 103.9 KDa).

Lane 2: Non-transfected lysate.

Please note: All products are 'FOR RESEARCH USE ONLY. NOT FOR USE IN DIAGNOSTIC OR THERAPEUTIC PROCEDURES'.