

SNRPA Antibody (monoclonal) (M01)

Mouse monoclonal antibody raised against a full length recombinant SNRPA.

Catalog # AT3982a

Product Information

Application	WB, IHC, IF, E
Primary Accession	P09012
Other Accession	BC000405
Reactivity	Human
Host	Mouse
Clonality	monoclonal
Isotype	IgG1 kappa
Clone Names	3F9-1F7
Calculated MW	31280

Additional Information

Gene ID	6626
Other Names	U1 small nuclear ribonucleoprotein A, U1 snRNP A, U1-A, U1A, SNRPA
Target/Specificity	SNRPA (AAH00405, 1 a.a. ~ 282 a.a) full-length recombinant protein with GST tag. MW of the GST tag alone is 26 KDa.
Dilution	WB~~1:500~1000 IHC~~1:100~500 IF~~1:50~200 E~~N/A
Format	Clear, colorless solution in phosphate buffered saline, pH 7.2 .
Storage	Store at -20°C or lower. Aliquot to avoid repeated freezing and thawing.
Precautions	SNRPA Antibody (monoclonal) (M01) is for research use only and not for use in diagnostic or therapeutic procedures.

Background

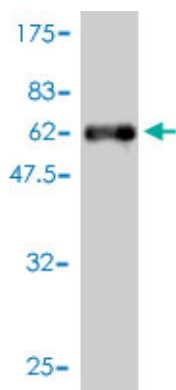
The protein encoded by this gene associates with stem loop II of the U2 small nuclear ribonucleoprotein, which binds the 5' splice site of precursor mRNAs and is required for splicing. The encoded protein autoregulates itself by polyadenylation inhibition of its own pre-mRNA via dimerization and has been implicated in the coupling of splicing and polyadenylation.

References

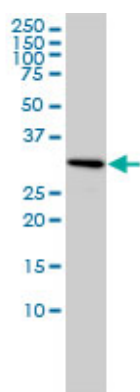
A bipartite U1 site represses U1A expression by synergizing with PIE to inhibit nuclear polyadenylation. Guan F, et al. RNA, 2007 Dec. PMID 17942741. Specific trans-acting proteins interact with auxiliary RNA polyadenylation elements in the COX-2 3'-UTR. Hall-Pogar T, et al. RNA, 2007 Jul. PMID 17507659. Large-scale

mapping of human protein-protein interactions by mass spectrometry. Ewing RM, et al. Mol Syst Biol, 2007. PMID 17353931. Towards a proteome-scale map of the human protein-protein interaction network. Rual JF, et al. Nature, 2005 Oct 20. PMID 16189514. ¹³C NMR relaxation studies of RNA base and ribose nuclei reveal a complex pattern of motions in the RNA binding site for human U1A protein. Shajani Z, et al. J Mol Biol, 2005 Jun 17. PMID 15890361.

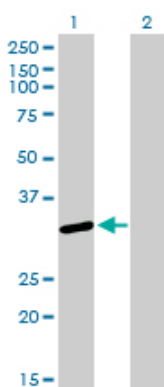
Images



Antibody Reactive Against Recombinant Protein. Western Blot detection against Immunogen (56.76 kDa) .

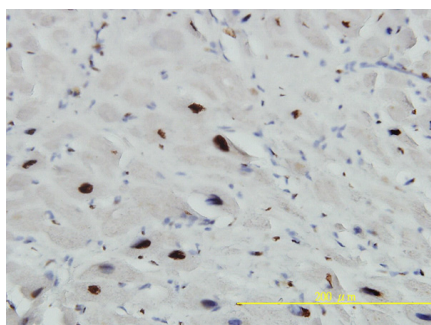


SNRPA monoclonal antibody (M01), clone 3F9-1F7
Western Blot analysis of SNRPA expression in Hela ((Cat # AT3982a)



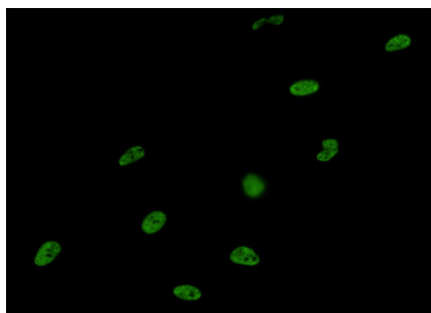
Western Blot analysis of SNRPA expression in transfected 293T cell line by SNRPA monoclonal antibody (M01), clone 3F9-1F7.

Lane 1: SNRPA transfected lysate(31.3 kDa).
Lane 2: Non-transfected lysate.

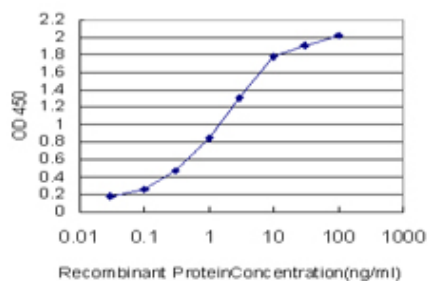


Immunoperoxidase of monoclonal antibody to SNRPA on formalin-fixed paraffin-embedded human heart tissue. [antibody concentration 3 ug/ml]

Immunofluorescence of monoclonal antibody to SNRPA



on HeLa cell. [antibody concentration 10 ug/ml]



Detection limit for recombinant GST tagged SNRPA is approximately 0.03ng/ml as a capture antibody.

Citations

- [The core spliceosome as target and effector of non-canonical ATM signalling.](#)

Please note: All products are 'FOR RESEARCH USE ONLY. NOT FOR USE IN DIAGNOSTIC OR THERAPEUTIC PROCEDURES'.