

## SORD Antibody (monoclonal) (M01)

Mouse monoclonal antibody raised against a partial recombinant SORD.

Catalog # AT3993a

### Product Information

---

Application	WB, IHC, E
Primary Accession	<a href="#">Q00796</a>
Other Accession	<a href="#">NM_003104</a>
Reactivity	Human, Mouse, Rat
Host	mouse
Clonality	monoclonal
Isotype	IgG1 Kappa
Clone Names	4D3
Calculated MW	38325

### Additional Information

---

Gene ID	6652
Other Names	Sorbitol dehydrogenase, L-iditol 2-dehydrogenase, SORD
Target/Specificity	SORD (NP_003095, 1 a.a. ~ 110 a.a) partial recombinant protein with GST tag. MW of the GST tag alone is 26 KDa.
Dilution	WB~~1:500~1000 IHC~~1:100~500 E~~N/A
Format	Clear, colorless solution in phosphate buffered saline, pH 7.2 .
Storage	Store at -20°C or lower. Aliquot to avoid repeated freezing and thawing.
Precautions	SORD Antibody (monoclonal) (M01) is for research use only and not for use in diagnostic or therapeutic procedures.

### Background

---

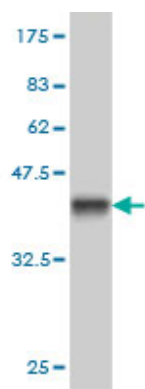
Sorbitol dehydrogenase (SORD; EC 1.1.1.14) catalyzes the interconversion of polyols and their corresponding ketoses, and together with aldose reductase (ALDR1; MIM 103880), makes up the sorbitol pathway that is believed to play an important role in the development of diabetic complications (summarized by Carr and Markham, 1995 [PubMed 8535074]). The first reaction of the pathway (also called the polyol pathway) is the reduction of glucose to sorbitol by ALDR1 with NADPH as the cofactor. SORD then oxidizes the sorbitol to fructose using NAD(+) cofactor.

### References

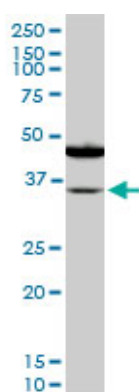
---

1.Sorbitol dehydrogenase expression is regulated by androgens in the human prostate.Szabo Z, Hamalainen

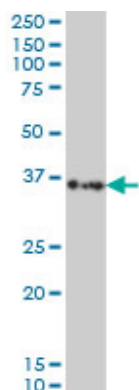
## Images



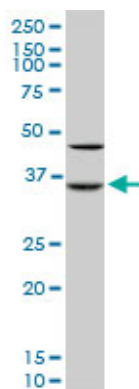
Antibody Reactive Against Recombinant Protein. Western Blot detection against Immunogen (37.84 KDa) .



SORD monoclonal antibody (M01), clone 4D3. Western Blot analysis of SORD expression in PC-12 ( (Cat # AT3993a )



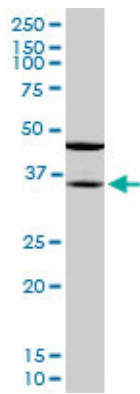
SORD monoclonal antibody (M01), clone 4D3 Western Blot analysis of SORD expression in Hela S3 NE ( (Cat # AT3993a )



SORD monoclonal antibody (M01), clone 4D3. Western Blot analysis of SORD expression in Raw 264.7 ( (Cat # AT3993a )

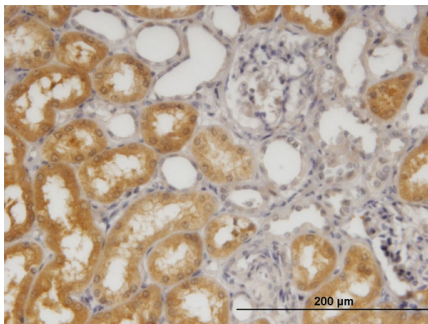
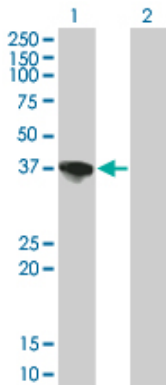
SORD monoclonal antibody (M01), clone 4D3. Western Blot analysis of SORD expression in NIH/3T3 ( (Cat #

AT3993a )

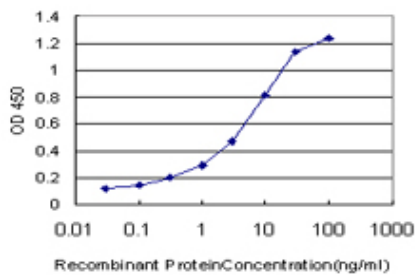


Western Blot analysis of SORD expression in transfected 293T cell line by SORD monoclonal antibody (M01), clone 4D3.

Lane 1: SORD transfected lysate(38.165 KDa).  
Lane 2: Non-transfected lysate.



Immunoperoxidase of monoclonal antibody to SORD on formalin-fixed paraffin-embedded human kidney. [antibody concentration 1.2 ug/ml]



Detection limit for recombinant GST tagged SORD is approximately 0.1 ng/ml as a capture antibody.

Please note: All products are 'FOR RESEARCH USE ONLY. NOT FOR USE IN DIAGNOSTIC OR THERAPEUTIC PROCEDURES'.