

SPAG6 Antibody (monoclonal) (M01)

Mouse monoclonal antibody raised against a partial recombinant SPAG6.

Catalog # AT4013a

Product Information

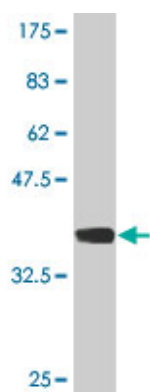
Application	WB
Primary Accession	O75602
Other Accession	NM_012443
Reactivity	Human
Host	mouse
Clonality	monoclonal
Isotype	IgG3 Kappa
Clone Names	3E4
Calculated MW	55476

Additional Information

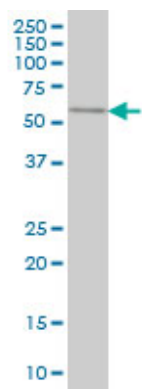
Gene ID	9576
Other Names	Sperm-associated antigen 6, Protein PF16 homolog, Repro-SA-1, Sperm flagellar protein, SPAG6, PF16
Target/Specificity	SPAG6 (NP_036575, 1 a.a. ~ 101 a.a) partial recombinant protein with GST tag. MW of the GST tag alone is 26 KDa.
Dilution	WB~~1:500~1000
Format	Clear, colorless solution in phosphate buffered saline, pH 7.2 .
Storage	Store at -20°C or lower. Aliquot to avoid repeated freezing and thawing.
Precautions	SPAG6 Antibody (monoclonal) (M01) is for research use only and not for use in diagnostic or therapeutic procedures.

Images

Antibody Reactive Against Recombinant Protein.Western Blot detection against Immunogen (37.11 KDa) .



SPAG6 monoclonal antibody (M01), clone 3E3 Western Blot analysis of SPAG6 expression in A-431 ((Cat # AT4013a)



Please note: All products are 'FOR RESEARCH USE ONLY. NOT FOR USE IN DIAGNOSTIC OR THERAPEUTIC PROCEDURES'.