

SPI1 Antibody (monoclonal) (M02)

Mouse monoclonal antibody raised against a partial recombinant SPI1.
Catalog # AT4022a

Product Information

Application	WB, IF, E
Primary Accession	P17947
Other Accession	NM_003120
Reactivity	Human, Mouse
Host	mouse
Clonality	monoclonal
Isotype	IgG1 Kappa
Clone Names	2G1
Calculated MW	31083

Additional Information

Gene ID	6688
Other Names	Transcription factor PU1, 31 kDa-transforming protein, SPI1
Target/Specificity	SPI1 (NP_003111, 1 a.a. ~ 120 a.a) partial recombinant protein with GST tag. MW of the GST tag alone is 26 KDa.
Dilution	WB~~1:500~1000 IF~~1:50~200 E~~N/A
Format	Clear, colorless solution in phosphate buffered saline, pH 7.2 .
Storage	Store at -20°C or lower. Aliquot to avoid repeated freezing and thawing.
Precautions	SPI1 Antibody (monoclonal) (M02) is for research use only and not for use in diagnostic or therapeutic procedures.

Background

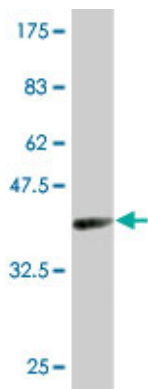
This gene encodes an ETS-domain transcription factor that activates gene expression during myeloid and B-lymphoid cell development. The nuclear protein binds to a purine-rich sequence known as the PU-box found near the promoters of target genes, and regulates their expression in coordination with other transcription factors and cofactors. The protein can also regulate alternative splicing of target genes. Multiple transcript variants encoding different isoforms have been found for this gene.

References

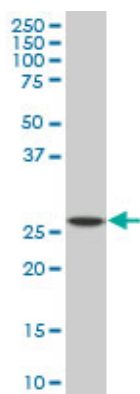
PU.1 is regulated by NF-kappaB through a novel binding site in a 17 kb upstream enhancer element. Bonadies N, et al. Oncogene, 2010 Feb 18. PMID 19966852. Heterozygous deletion of the PU.1 locus in

human AML. Bonadies N, et al. Blood, 2010 Jan 14. PMID 19890096. PU.1 regulates positive regulatory domain I-binding factor 1/Blimp-1 transcription in lymphoma cells. Desai S, et al. J Immunol, 2009 Nov 1. PMID 19828640. PU.1 activation relieves GATA-1-mediated repression of Cebpa and Cbfb during leukemia differentiation. Burda P, et al. Mol Cancer Res, 2009 Oct. PMID 19825991. PU.1 induces apoptosis in myeloma cells through direct transactivation of TRAIL. Ueno S, et al. Oncogene, 2009 Nov 19. PMID 19749795.

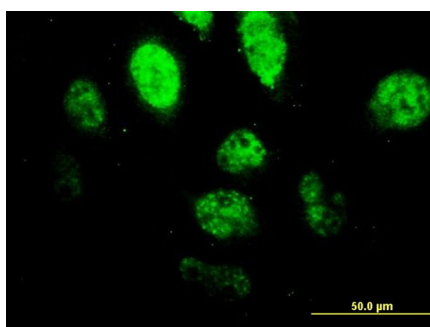
Images



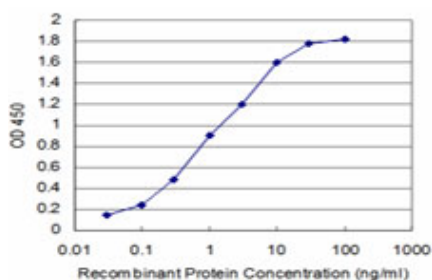
Antibody Reactive Against Recombinant Protein. Western Blot detection against Immunogen (38.94 KDa) .



SPI1 monoclonal antibody (M02), clone 2G1. Western Blot analysis of SPI1 expression in Raw 264.7.



Immunofluorescence of monoclonal antibody to SPI1 on HeLa cell. [antibody concentration 10 ug/ml]



Detection limit for recombinant GST tagged SPI1 is approximately 0.1 ng/ml as a capture antibody.

Please note: All products are 'FOR RESEARCH USE ONLY. NOT FOR USE IN DIAGNOSTIC OR THERAPEUTIC PROCEDURES'.