

SPRR3 Antibody (monoclonal) (M01)

Mouse monoclonal antibody raised against a full length recombinant SPRR3.

Catalog # AT4030a

Product Information

Application	WB, IHC, E
Primary Accession	Q9UBC9
Other Accession	BC017802
Reactivity	Human
Host	mouse
Clonality	monoclonal
Isotype	IgG3 Kappa
Clone Names	4A12
Calculated MW	18154

Additional Information

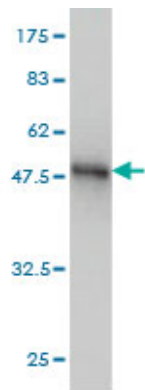
Gene ID	6707
Other Names	Small proline-rich protein 3, 22 kDa pancornulin, Cornifin beta, Esophagin, SPRR3, SPRC
Target/Specificity	SPRR3 (AAH17802, 1 a.a. ~ 161 a.a) full-length recombinant protein with GST tag. MW of the GST tag alone is 26 KDa.
Dilution	WB~~1:500~1000 IHC~~1:100~500 E~~N/A
Format	Clear, colorless solution in phosphate buffered saline, pH 7.2 .
Storage	Store at -20°C or lower. Aliquot to avoid repeated freezing and thawing.
Precautions	SPRR3 Antibody (monoclonal) (M01) is for research use only and not for use in diagnostic or therapeutic procedures.

References

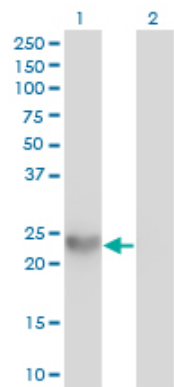
Characterization of two isoforms of human SPRR3 from saliva of preterm human newborn and autaptic fetal oral mucosa, parotid and submandibular gland samples. Manconi B, et al. Biochem Biophys Res Commun, 2010 Jul 30. PMID 20599699. Biomechanical stress induces novel arterial intima-enriched genes: implications for vascular adaptation to stress. Pyle AL, et al. Cardiovasc Pathol, 2010 Mar-Apr. PMID 19211270. Regulation of the atheroma-enriched protein, SPRR3, in vascular smooth muscle cells through cyclic strain is dependent on integrin alpha1beta1/collagen interaction. Pyle AL, et al. Am J Pathol, 2008 Nov. PMID 18832573. Association of psoriasis to PGLYRP and SPRR genes at PSORS4 locus on 1q shows heterogeneity between Finnish, Swedish and Irish families. Kainu K, et al. Exp Dermatol, 2009 Feb. PMID 18643845. Exogenous expression of Esophagin/SPRR3 attenuates the tumorigenicity of esophageal

squamous cell carcinoma cells via promoting apoptosis. Zhang Y, et al. Int J Cancer, 2008 Jan 15. PMID 17935133.

Images

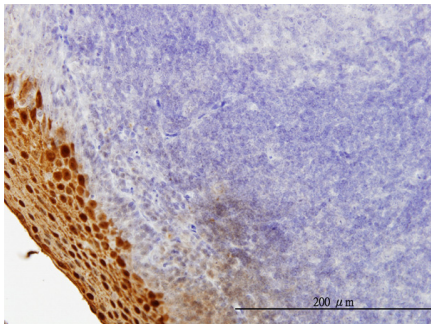


Antibody Reactive Against Recombinant Protein.Western Blot detection against Immunogen (43.45 KDa) .

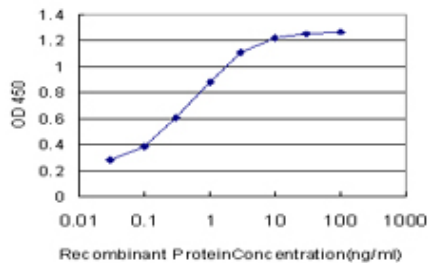


Western Blot analysis of SPRR3 expression in transfected 293T cell line by SPRR3 monoclonal antibody (M01), clone 4A12.

Lane 1: SPRR3 transfected lysate(18.2 KDa).
Lane 2: Non-transfected lysate.



Immunoperoxidase of monoclonal antibody to SPRR3 on formalin-fixed paraffin-embedded human tonsil. [antibody concentration 3 ug/ml]



Detection limit for recombinant GST tagged SPRR3 is approximately 0.03ng/ml as a capture antibody.

Please note: All products are 'FOR RESEARCH USE ONLY. NOT FOR USE IN DIAGNOSTIC OR THERAPEUTIC PROCEDURES'.