

## SPRY2 Antibody (monoclonal) (M01)

Mouse monoclonal antibody raised against a full length recombinant SPRY2.

Catalog # AT4032a

### Product Information

---

<b>Application</b>	WB, IHC, IF, E
<b>Primary Accession</b>	<a href="#">O43597</a>
<b>Other Accession</b>	<a href="#">BC015745</a>
<b>Reactivity</b>	Human
<b>Host</b>	Mouse
<b>Clonality</b>	monoclonal
<b>Isotype</b>	IgG1 Kappa
<b>Clone Names</b>	1E11
<b>Calculated MW</b>	34688

### Additional Information

---

<b>Gene ID</b>	10253
<b>Other Names</b>	Protein sprouty homolog 2, Spry-2, SPRY2
<b>Target/Specificity</b>	SPRY2 (AAH15745.1, 1 a.a. ~ 315 a.a) full-length recombinant protein with GST tag. MW of the GST tag alone is 26 KDa.
<b>Dilution</b>	WB~~1:500~1000 IHC~~1:100~500 IF~~1:50~200 E~~N/A
<b>Format</b>	Clear, colorless solution in phosphate buffered saline, pH 7.2 .
<b>Storage</b>	Store at -20°C or lower. Aliquot to avoid repeated freezing and thawing.
<b>Precautions</b>	SPRY2 Antibody (monoclonal) (M01) is for research use only and not for use in diagnostic or therapeutic procedures.

### Background

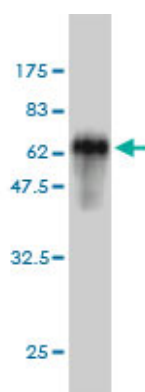
---

This gene encodes a protein belonging to the sprouty family. The encoded protein contains a carboxyl-terminal cysteine-rich domain essential for the inhibitory activity on receptor tyrosine kinase signaling proteins and is required for growth factor stimulated translocation of the protein to membrane ruffles. In primary dermal endothelial cells this gene is transiently upregulated in response to fibroblast growth factor two. This protein is indirectly involved in the non-cell autonomous inhibitory effect on fibroblast growth factor two signaling. The protein interacts with Cas-Br-M (murine) ectropic retroviral transforming sequence, and can function as a bimodal regulator of epidermal growth factor receptor/mitogen-activated protein kinase signaling. This protein may play a role in alveoli branching during lung development as shown by a similar mouse protein.

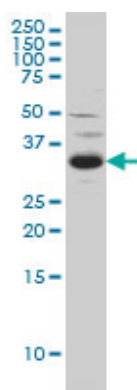
## References

1.SPROUTY2 is a  $\beta$ -catenin and FOXO3a target gene indicative of poor prognosis in colon cancer.Ordenez-Moran P, Irmisch A, Barbachano A, Chicote I, Tenbaum S, Landolfi S, Tabernero J, Huelsken J, Munoz A, Palmer HG.Oncogene. 2013 Apr 29. doi: 10.1038/onc.2013.140.2.Initial Report on Differential Expression of Sprouty Proteins 1 and 2 in Human Epithelial Ovarian Cancer Cell Lines.Moghaddam SM, Amini A, Wei AQ, Pourgholami MH, Morris DL.J Oncol. 2012;2012:373826. doi: 10.1155/2012/373826. Epub 2012 Nov 29.3.SPROUTY-2 and E-cadherin regulate reciprocally and dictate colon cancer cell tumorigenicity.Barbachano A, Ordenez-Moran P, Garcia JM, Sanchez A, Pereira F, Larriba MJ, Martinez N, Hernandez J, Landolfi S, Bonilla F, Palmer HG, Rojas JM, Munoz A.Oncogene. 2010 Jun 14. [Epub ahead of print]

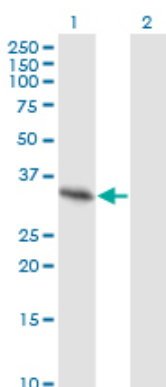
## Images



Antibody Reactive Against Recombinant Protein.Western Blot detection against Immunogen (60.39 KDa) .



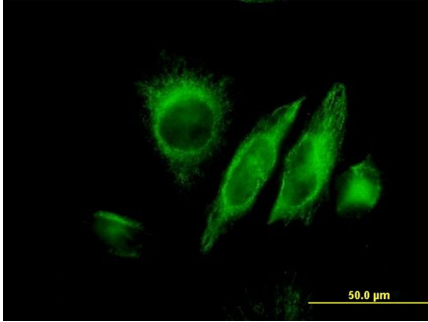
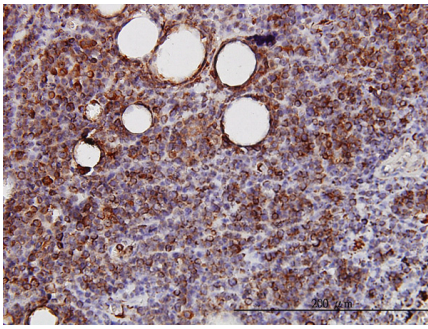
SPRY2 monoclonal antibody (M01), clone 1E10 Western Blot analysis of SPRY2 expression in C32 ( (Cat # AT4032a )



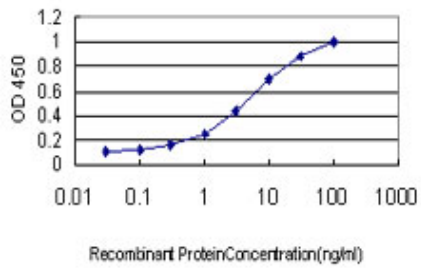
Western Blot analysis of SPRY2 expression in transfected 293T cell line by SPRY2 monoclonal antibody (M01), clone 1E10.

Lane 1: SPRY2 transfected lysate(34.7 KDa).  
Lane 2: Non-transfected lysate.

Immunoperoxidase of monoclonal antibody to SPRY2 on formalin-fixed paraffin-embedded human lymphoma. [antibody concentration 3 ug/ml]



Immunofluorescence of monoclonal antibody to SPRY2 on HeLa cell. [antibody concentration 25 ug/ml]



Detection limit for recombinant GST tagged SPRY2 is approximately 0.1ng/ml as a capture antibody.

Please note: All products are 'FOR RESEARCH USE ONLY. NOT FOR USE IN DIAGNOSTIC OR THERAPEUTIC PROCEDURES'.