

SRI Antibody (monoclonal) (M01)

Mouse monoclonal antibody raised against a full length recombinant SRI.
Catalog # AT4040a

Product Information

Application	WB
Primary Accession	P30626
Other Accession	BC011025
Reactivity	Human, Mouse, Rat
Host	mouse
Clonality	monoclonal
Isotype	IgG2a Kappa
Clone Names	1.0E+12
Calculated MW	21676

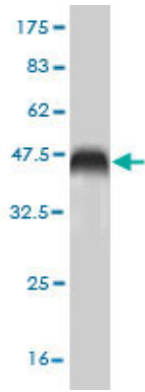
Additional Information

Gene ID	6717
Other Names	Sorcin, 22 kDa protein, CP-22, CP22, V19, SRI
Target/Specificity	SRI (AAH11025, 1 a.a. ~ 198 a.a) full-length recombinant protein with GST tag. MW of the GST tag alone is 26 kDa.
Dilution	WB~1:500~1000
Format	Clear, colorless solution in phosphate buffered saline, pH 7.2 .
Storage	Store at -20°C or lower. Aliquot to avoid repeated freezing and thawing.
Precautions	SRI Antibody (monoclonal) (M01) is for research use only and not for use in diagnostic or therapeutic procedures.

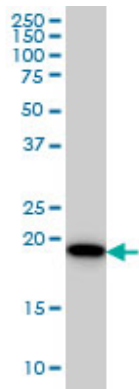
References

Variation at the NFATC2 Locus Increases the Risk of Thiazolinedione-Induced Edema in the Diabetes REduction Assessment with ramipril and rosiglitazone Medication (DREAM) Study. Bailey SD, et al. Diabetes Care, 2010 Jul 13. PMID 20628086. Gene-centric association signals for lipids and apolipoproteins identified via the HumanCVD BeadChip. Talmud PJ, et al. Am J Hum Genet, 2009 Nov. PMID 19913121. [Correlation of sorcin overexpression to multidrug resistance of human gastric cancer cell line SGC7901] He QC, et al. Ai Zheng, 2008 Apr. PMID 18423116. [Influence of tetrandrine on SORCIN gene expression in K562/A02 cell line] Li J, et al. Zhongguo Shi Yan Xue Ye Xue Za Zhi, 2008 Feb. PMID 18315902. Molecular basis for the impaired function of the natural F112L sorcin mutant: X-ray crystal structure, calcium affinity, and interaction with annexin VII and the ryanodine receptor. Franceschini S, et al. FASEB J, 2008 Jan. PMID 17699613.

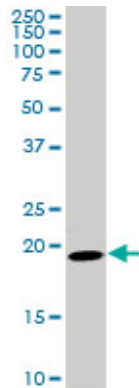
Images



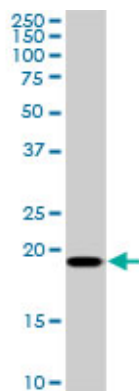
Antibody Reactive Against Recombinant Protein. Western Blot detection against Immunogen (47.52 KDa) .



SRI monoclonal antibody (M01), clone 1E12 Western Blot analysis of SRI expression in HeLa ((Cat # AT4040a)

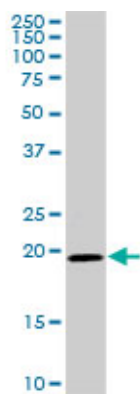


SRI monoclonal antibody (M01), clone 1E12. Western Blot analysis of SRI expression in PC-12 ((Cat # AT4040a)



SRI monoclonal antibody (M01), clone 1E12. Western Blot analysis of SRI expression in Raw 264.7 ((Cat # AT4040a)

SRI monoclonal antibody (M01), clone 1E12. Western Blot analysis of SRI expression in NIH/3T3 ((Cat # AT4040a)



Please note: All products are 'FOR RESEARCH USE ONLY. NOT FOR USE IN DIAGNOSTIC OR THERAPEUTIC PROCEDURES'.