

## SSSCA1 Antibody (monoclonal) (M03)

Mouse monoclonal antibody raised against a full-length recombinant SSSCA1.

Catalog # AT4048a

### Product Information

---

<b>Application</b>	WB, E
<b>Primary Accession</b>	<a href="#">O60232</a>
<b>Other Accession</b>	<a href="#">BC014791</a>
<b>Reactivity</b>	Human
<b>Host</b>	mouse
<b>Clonality</b>	monoclonal
<b>Isotype</b>	IgG2b Kappa
<b>Clone Names</b>	2H4
<b>Calculated MW</b>	21474

### Additional Information

---

<b>Gene ID</b>	10534
<b>Other Names</b>	Sjogren syndrome/scleroderma autoantigen 1, Autoantigen p27, SSSCA1
<b>Target/Specificity</b>	SSSCA1 (AAH14791.1, 1 a.a. ~ 199 a.a) full-length recombinant protein with GST tag. MW of the GST tag alone is 26 KDa.
<b>Dilution</b>	WB~~1:500~1000 E~~N/A
<b>Format</b>	Clear, colorless solution in phosphate buffered saline, pH 7.2 .
<b>Storage</b>	Store at -20°C or lower. Aliquot to avoid repeated freezing and thawing.
<b>Precautions</b>	SSSCA1 Antibody (monoclonal) (M03) is for research use only and not for use in diagnostic or therapeutic procedures.

### Background

---

This antigen is recognized by a subset of anti-centromere antibodies from patients with scleroderma and/or Sjogren's syndrome. Subcellular localization has not yet been established.

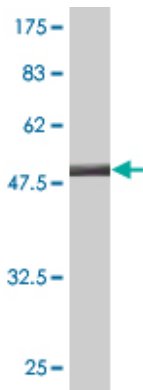
### References

---

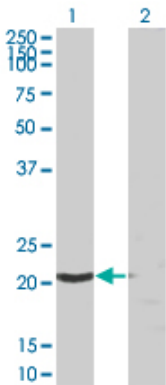
Expression of CRM1 in human gliomas and its significance in p27 expression and clinical prognosis. Shen A, et al. Neurosurgery, 2009 Jul. PMID 19574837. Large-scale mapping of human protein-protein interactions by mass spectrometry. Ewing RM, et al. Mol Syst Biol, 2007. PMID 17353931. Towards a proteome-scale map of the human protein-protein interaction network. Rual JF, et al. Nature, 2005 Oct 20. PMID 16189514. The status, quality, and expansion of the NIH full-length cDNA project: the Mammalian Gene Collection (MGC).

Gerhard DS, et al. Genome Res, 2004 Oct. PMID 15489334.Generation and initial analysis of more than 15,000 full-length human and mouse cDNA sequences. Strausberg RL, et al. Proc Natl Acad Sci U S A, 2002 Dec 24. PMID 12477932.

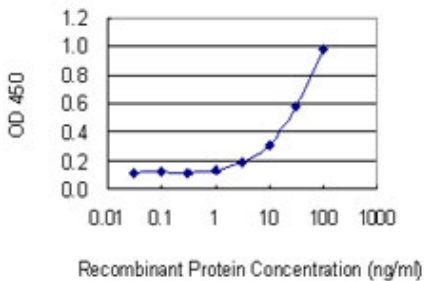
Images



Antibody Reactive Against Recombinant Protein.Western Blot detection against Immunogen (47.63 KDa) .



Western Blot analysis of SSSCA1 expression in transfected 293T cell line by SSSCA1 monoclonal antibody (M03), clone 2H4.  
  
Lane 1: SSSCA1 transfected lysate(21.474 KDa).  
Lane 2: Non-transfected lysate.



Detection limit for recombinant GST tagged SSSCA1 is 1 ng/ml as a capture antibody.

Please note: All products are 'FOR RESEARCH USE ONLY. NOT FOR USE IN DIAGNOSTIC OR THERAPEUTIC PROCEDURES'.