

STAT4 Antibody (monoclonal) (M01)

Mouse monoclonal antibody raised against a full length recombinant STAT4.

Catalog # AT4063a

Product Information

Application	WB, IHC, IF, IP, E
Primary Accession	Q14765
Other Accession	BC031212
Reactivity	Human
Host	mouse
Clonality	monoclonal
Isotype	IgG1 Kappa
Clone Names	1C2-1C12
Calculated MW	85941

Additional Information

Gene ID	6775
Other Names	Signal transducer and activator of transcription 4, STAT4
Target/Specificity	STAT4 (AAH31212, 1 a.a. ~ 748 a.a) full-length recombinant protein with GST tag. MW of the GST tag alone is 26 KDa.
Dilution	WB~~1:500~1000 IHC~~1:100~500 IF~~1:50~200 IP~~N/A E~~N/A
Format	Clear, colorless solution in phosphate buffered saline, pH 7.2 .
Storage	Store at -20°C or lower. Aliquot to avoid repeated freezing and thawing.
Precautions	STAT4 Antibody (monoclonal) (M01) is for research use only and not for use in diagnostic or therapeutic procedures.

Background

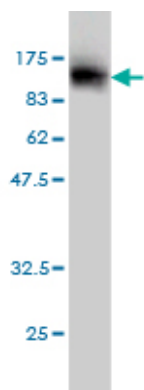
The protein encoded by this gene is a member of the STAT family of transcription factors. In response to cytokines and growth factors, STAT family members are phosphorylated by the receptor associated kinases, and then form homo- or heterodimers that translocate to the cell nucleus where they act as transcription activators. This protein is essential for mediating responses to IL12 in lymphocytes, and regulating the differentiation of T helper cells.

References

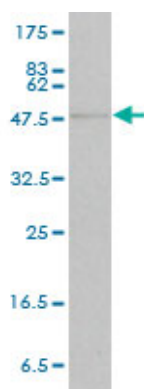
STAT4 is a confirmed genetic risk factor for Sjögren's syndrome and could be involved in type 1 interferon pathway signaling. Gestermann N, et al. Genes Immun, 2010 Jul. PMID 20535138. Interleukin-9

polymorphism in infants with respiratory syncytial virus infection: an opposite effect in boys and girls. Schuurhof A, et al. *Pediatr Pulmonol*, 2010 Jun. PMID 20503287. Investigation of potential non-HLA rheumatoid arthritis susceptibility loci in a European cohort increases the evidence for nine markers. Plant D, et al. *Ann Rheum Dis*, 2010 Aug. PMID 20498205. Genetic risk factors in lupus nephritis and IgA nephropathy--no support of an overlap. Vuong MT, et al. *PLoS One*, 2010 May 10. PMID 20479942. Evidence for STAT4 as a common autoimmune gene: rs7574865 is associated with colonic Crohn's disease and early disease onset. Glas J, et al. *PLoS One*, 2010 Apr 29. PMID 20454450.

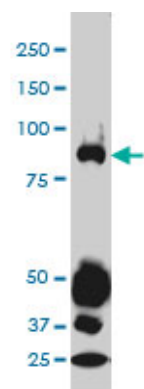
Images



Antibody Reactive Against Recombinant Protein. Western Blot detection against Immunogen (108.02 KDa) .



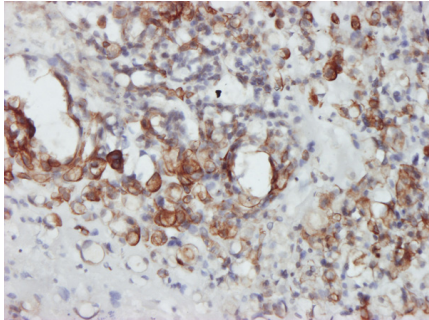
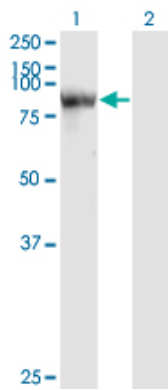
STAT4 monoclonal antibody (M01), clone 1C2-1C12. Western Blot analysis of STAT4 expression in human liver.



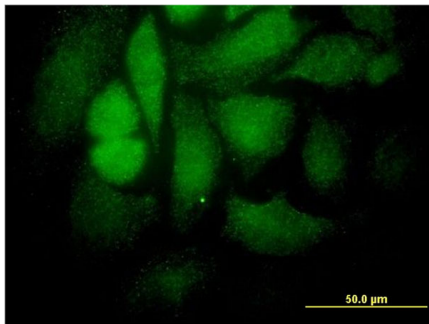
STAT4 monoclonal antibody (M01), clone 1C2-1C12 Western Blot analysis of STAT4 expression in A-549 (Cat # AT4063a)

Western Blot analysis of STAT4 expression in transfected 293T cell line by STAT4 monoclonal antibody (M01), clone 1C2-1C12.

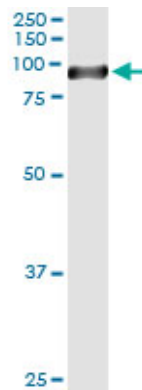
Lane 1: STAT4 transfected lysate(85.9 KDa).
Lane 2: Non-transfected lysate.



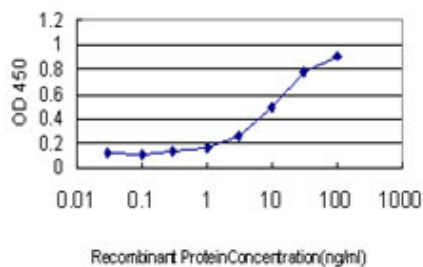
Immunoperoxidase of monoclonal antibody to STAT4 on formalin-fixed paraffin-embedded human ovary, clear cell carcinoma tissue. [antibody concentration 1 ~ 10 ug/ml]



Immunofluorescence of monoclonal antibody to STAT4 on HeLa cell. [antibody concentration 10 ug/ml]



Immunoprecipitation of STAT4 transfected lysate using anti-STAT4 monoclonal antibody and Protein A Magnetic Bead ([U0007](#)), and immunoblotted with STAT4 MaxPab rabbit polyclonal antibody.



Detection limit for recombinant GST tagged STAT4 is approximately 0.3ng/ml as a capture antibody.