

STIP1 Antibody (monoclonal) (M01)

Mouse monoclonal antibody raised against a full length recombinant STIP1.

Catalog # AT4076a

Product Information

Application	WB, IHC, IF, IP, E
Primary Accession	P31948
Other Accession	BC002987
Reactivity	Human
Host	mouse
Clonality	monoclonal
Isotype	IgG2a Kappa
Clone Names	4B6
Calculated MW	62639

Additional Information

Gene ID	10963
Other Names	Stress-induced-phosphoprotein 1, STI1, Hsc70/Hsp90-organizing protein, Hop, Renal carcinoma antigen NY-REN-11, Transformation-sensitive protein IEF SSP 3521, STIP1
Target/Specificity	STIP1 (AAH02987.1, 1 a.a. ~ 543 a.a) full-length recombinant protein with GST tag. MW of the GST tag alone is 26 KDa.
Dilution	WB~~1:500~1000 IHC~~1:100~500 IF~~1:50~200 IP~~N/A E~~N/A
Format	Clear, colorless solution in phosphate buffered saline, pH 7.2 .
Storage	Store at -20°C or lower. Aliquot to avoid repeated freezing and thawing.
Precautions	STIP1 Antibody (monoclonal) (M01) is for research use only and not for use in diagnostic or therapeutic procedures.

Background

STIP1 is an adaptor protein that coordinates the functions of HSP70 (see HSPA1A; MIM 140550) and HSP90 (see HSP90AA1; MIM 140571) in protein folding. It is thought to assist in the transfer of proteins from HSP70 to HSP90 by binding both HSP90 and substrate-bound HSP70. STIP1 also stimulates the ATPase activity of HSP70 and inhibits the ATPase activity of HSP90, suggesting that it regulates both the conformations and ATPase cycles of these chaperones (Song and Masison, 2005 [PubMed 16100115]).

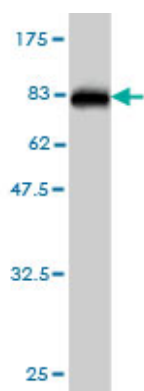
References

1. Stress-induced phosphoprotein 1 as a secreted biomarker for human ovarian cancer promotes cancer cell proliferation. Wang TH, Chao A, Tsai CL, Chang CL, Chen SH, Lee YS, Chen JK, Lin YJ, Chang PY, Wang CJ, Chao AS, Chang SD, Chang TC, Lai CH, Wang HS. *Mol Cell Proteomics*. 2010 May 25. [Epub ahead of print]

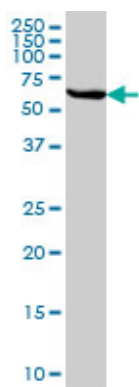
2. Proteomic analysis of protein complexes in human SH-SY5Y neuroblastoma cells by using blue-native gel electrophoresis: An increase in lamin A/C associated with heat shock protein 90 in response to 6-hydroxydopamine-induced oxidative stress. Nakamura M, Morisawa H, Imajoh-Ohmi S, Takamura C, Fukuda H, Toda T. *Exp Gerontol*. 2009 Jun-Jul;44(6-7):375-82. Epub 2009 Mar 3.

3. Novel Breast Cancer Metastasis-Associated Proteins. Ho J, Kong JW, Choong LY, Loh MC, Toy W, Chong PK, Wong CH, Wong CY, Shah N, Lim YP. *J Proteome Res*. 2009 Feb 6;8(2):583-594.

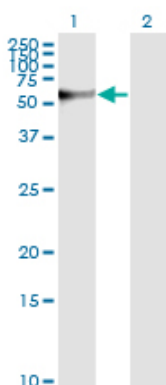
Images



Antibody Reactive Against Recombinant Protein. Western Blot detection against Immunogen (85.25 KDa) .



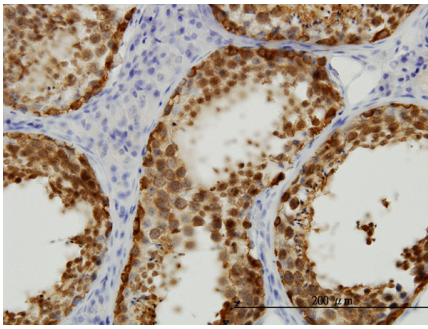
STIP1 monoclonal antibody (M01), clone 4B6 Western Blot analysis of STIP1 expression in HeLa (Cat # AT4076a)



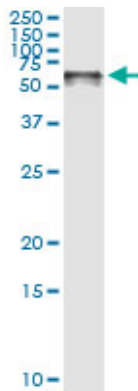
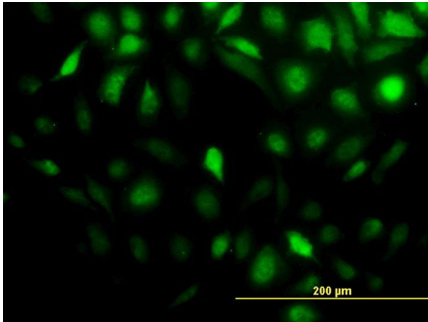
Western Blot analysis of STIP1 expression in transfected 293T cell line by STIP1 monoclonal antibody (M01), clone 4B6.

Lane 1: STIP1 transfected lysate (62.6 KDa).
Lane 2: Non-transfected lysate.

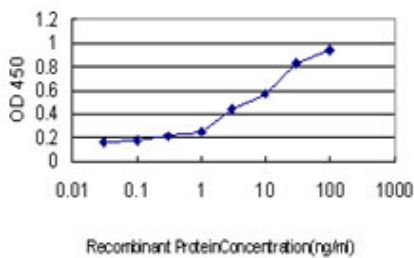
Immunoperoxidase of monoclonal antibody to STIP1 on formalin-fixed paraffin-embedded human testis. [antibody concentration 0.3 ug/ml]



Immunofluorescence of monoclonal antibody to STIP1 on HeLa cell. [antibody concentration 10 ug/ml]



Immunoprecipitation of STIP1 transfected lysate using anti-STIP1 monoclonal antibody and Protein A Magnetic Bead ([U0007](#)), and immunoblotted with STIP1 MaxPab rabbit polyclonal antibody.



Detection limit for recombinant GST tagged STIP1 is approximately 0.1ng/ml as a capture antibody.

Please note: All products are 'FOR RESEARCH USE ONLY. NOT FOR USE IN DIAGNOSTIC OR THERAPEUTIC PROCEDURES'.