

STIP1 Antibody (monoclonal) (M11)

Mouse monoclonal antibody raised against a partial recombinant STIP1.

Catalog # AT4077a

Product Information

Application	WB, IHC, IF, E
Primary Accession	P31948
Other Accession	NM_006819
Reactivity	Human, Mouse, Rat
Host	mouse
Clonality	monoclonal
Isotype	IgG2a Kappa
Clone Names	1E4
Calculated MW	62639

Additional Information

Gene ID	10963
Other Names	Stress-induced-phosphoprotein 1, STI1, Hsc70/Hsp90-organizing protein, Hop, Renal carcinoma antigen NY-REN-11, Transformation-sensitive protein IEF SSP 3521, STIP1
Target/Specificity	STIP1 (NP_006810.1, 445 a.a. ~ 543 a.a) partial recombinant protein with GST tag. MW of the GST tag alone is 26 KDa.
Dilution	WB~~1:500~1000 IHC~~1:100~500 IF~~1:50~200 E~~N/A
Format	Clear, colorless solution in phosphate buffered saline, pH 7.2 .
Storage	Store at -20°C or lower. Aliquot to avoid repeated freezing and thawing.
Precautions	STIP1 Antibody (monoclonal) (M11) is for research use only and not for use in diagnostic or therapeutic procedures.

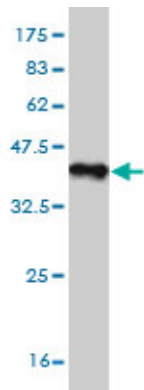
Background

STIP1 is an adaptor protein that coordinates the functions of HSP70 (see HSPA1A; MIM 140550) and HSP90 (see HSP90AA1; MIM 140571) in protein folding. It is thought to assist in the transfer of proteins from HSP70 to HSP90 by binding both HSP90 and substrate-bound HSP70. STIP1 also stimulates the ATPase activity of HSP70 and inhibits the ATPase activity of HSP90, suggesting that it regulates both the conformations and ATPase cycles of these chaperones (Song and Masison, 2005 [PubMed 16100115]).

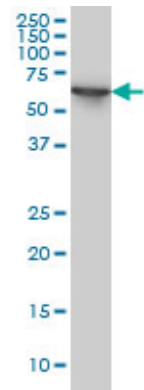
References

1.Glaucoma-associated WDR36 variants encode functional defects in a yeast model system.Footz TK, Johnson JL, Dubois S, Boivin N, Raymond V, Walter MA.Hum Mol Genet. 2009 Apr 1;18(7):1276-87. Epub 2009 Jan 15.

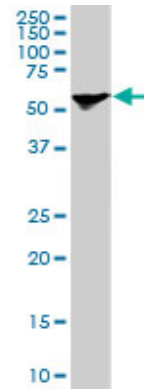
Images



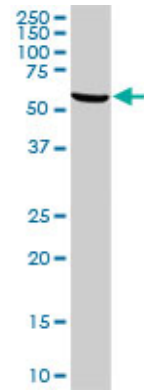
Antibody Reactive Against Recombinant Protein.Western Blot detection against Immunogen (36.63 KDa) .



STIP1 monoclonal antibody (M11), clone 1E3 Western Blot analysis of STIP1 expression in HeLa ((Cat # AT4077a)

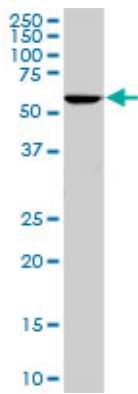


STIP1 monoclonal antibody (M11), clone 1E3. Western Blot analysis of STIP1 expression in PC-12 ((Cat # AT4077a)

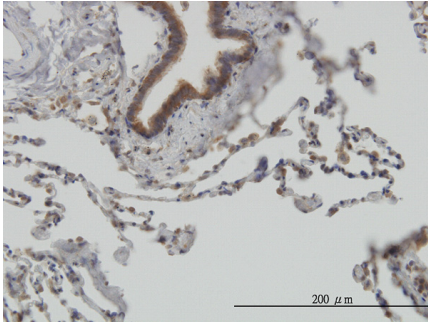


STIP1 monoclonal antibody (M11), clone 1E3. Western Blot analysis of STIP1 expression in Raw 264.7 ((Cat # AT4077a)

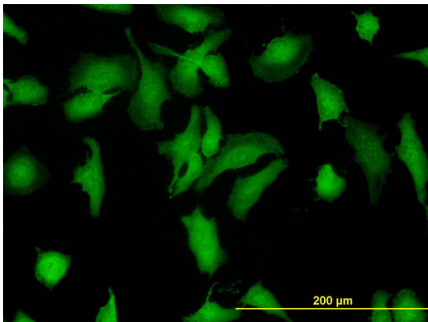
STIP1 monoclonal antibody (M11), clone 1E3. Western



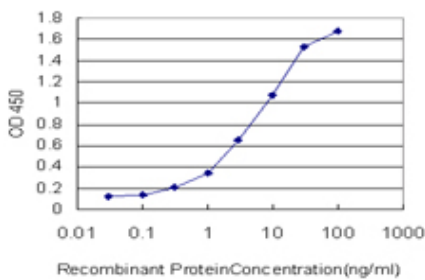
Blot analysis of STIP1 expression in NIH/3T3 (Cat # AT4077a)



Immunoperoxidase of monoclonal antibody to STIP1 on formalin-fixed paraffin-embedded human lung. [antibody concentration 3 ug/ml]



Immunofluorescence of monoclonal antibody to STIP1 on HeLa cell. [antibody concentration 10 ug/ml]



Detection limit for recombinant GST tagged STIP1 is approximately 0.03ng/ml as a capture antibody.

Please note: All products are 'FOR RESEARCH USE ONLY. NOT FOR USE IN DIAGNOSTIC OR THERAPEUTIC PROCEDURES'.