

STX1A Antibody (monoclonal) (M02)

Mouse monoclonal antibody raised against a full length recombinant STX1A.

Catalog # AT4095a

Product Information

Application	WB, IF, E
Primary Accession	Q16623
Other Accession	BC003011.1
Reactivity	Human, Rat
Host	mouse
Clonality	monoclonal
Isotype	IgG1 Kappa
Clone Names	1B11-1A8
Calculated MW	33023

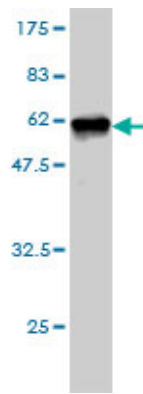
Additional Information

Gene ID	6804
Other Names	Syntaxin-1A, Neuron-specific antigen HPC-1, STX1A, STX1
Target/Specificity	STX1A (AAH03011.1, 1 a.a. ~ 251 a.a) full-length recombinant protein with GST tag. MW of the GST tag alone is 26 KDa.
Dilution	WB~~1:500~1000 IF~~1:50~200 E~~N/A
Format	Clear, colorless solution in phosphate buffered saline, pH 7.2 .
Storage	Store at -20°C or lower. Aliquot to avoid repeated freezing and thawing.
Precautions	STX1A Antibody (monoclonal) (M02) is for research use only and not for use in diagnostic or therapeutic procedures.

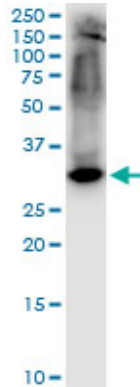
Background

Synaptic vesicles store neurotransmitters that are released during calcium-regulated exocytosis. The specificity of neurotransmitter release requires the localization of both synaptic vesicles and calcium channels to the presynaptic active zone. Syntaxins function in this vesicle fusion process. Syntaxins also serve as a substrate for botulinum neurotoxin type C, a metalloprotease that blocks exocytosis and has high affinity for a molecular complex that includes the alpha-latrotoxin receptor (MIM 600565) which produces explosive exocytosis (Zhang et al., 1995 [PubMed 7622072]).[supplied by OMIM]

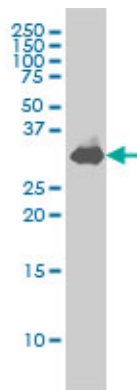
Images



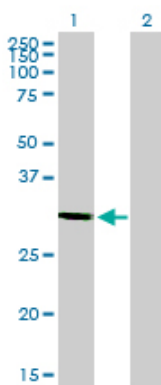
Antibody Reactive Against Recombinant Protein. Western Blot detection against Immunogen (53.35 KDa) .



STX1A monoclonal antibody (M02), clone 1B11-1A8.
Western Blot analysis of STX1A expression in PC-12 (Cat # AT4095a)



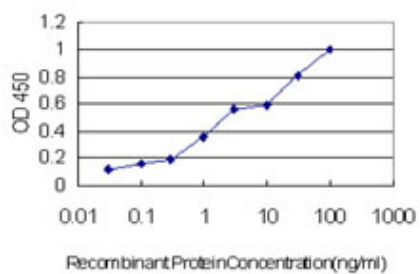
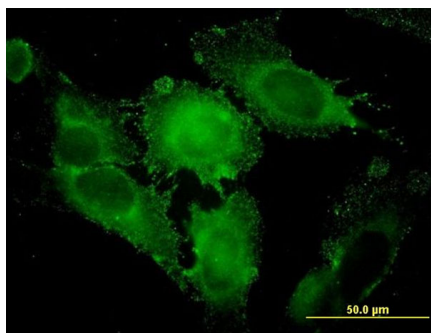
STX1A monoclonal antibody (M02), clone 1B11-1A8
Western Blot analysis of STX1A expression in IMR-32 (Cat # AT4095a)



Western Blot analysis of STX1A expression in transfected 293T cell line by STX1A monoclonal antibody (M02), clone 1B11-1A8.

Lane 1: STX1A transfected lysate (29 KDa).
Lane 2: Non-transfected lysate.

Immunofluorescence of monoclonal antibody to STX1A on HeLa cell. [antibody concentration 10 ug/ml]



Detection limit for recombinant GST tagged STX1A is approximately 0.1ng/ml as a capture antibody.

Please note: All products are 'FOR RESEARCH USE ONLY. NOT FOR USE IN DIAGNOSTIC OR THERAPEUTIC PROCEDURES'.