

STX5A Antibody (monoclonal) (M01)

Mouse monoclonal antibody raised against a partial recombinant STX5A.

Catalog # AT4098a

Product Information

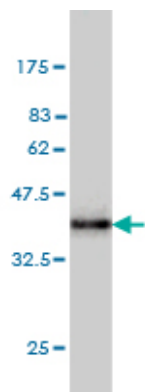
Application	WB, IHC, IF, E
Primary Accession	Q13190
Other Accession	NM_003164.1
Reactivity	Human
Host	mouse
Clonality	monoclonal
Isotype	IgG1 Kappa
Clone Names	5A6
Calculated MW	39673

Additional Information

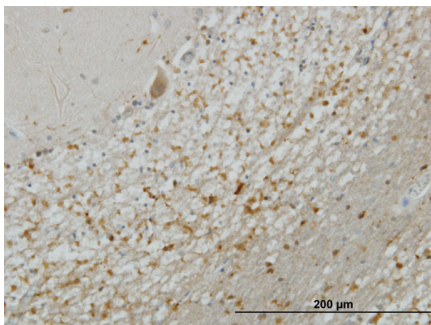
Gene ID	6811
Other Names	Syntaxin-5, STX5, STX5A
Target/Specificity	STX5A (NP_003155.1, 1 a.a. ~ 100 a.a) partial recombinant protein with GST tag. MW of the GST tag alone is 26 KDa.
Dilution	WB~~1:500~1000 IHC~~1:100~500 IF~~1:50~200 E~~N/A
Format	Clear, colorless solution in phosphate buffered saline, pH 7.2 .
Storage	Store at -20°C or lower. Aliquot to avoid repeated freezing and thawing.
Precautions	STX5A Antibody (monoclonal) (M01) is for research use only and not for use in diagnostic or therapeutic procedures.

References

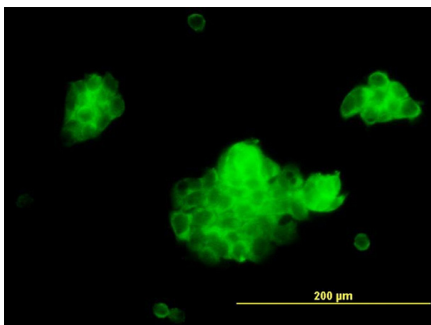
Direct interaction between the COG complex and the SM protein, Sly1, is required for Golgi SNARE pairing. Laufman O, et al. EMBO J, 2009 Jul 22. PMID 19536132. Coordination of golgin tethering and SNARE assembly: GM130 binds syntaxin 5 in a p115-regulated manner. Diao A, et al. J Biol Chem, 2008 Mar 14. PMID 18167358. Toward a confocal subcellular atlas of the human proteome. Barbe L, et al. Mol Cell Proteomics, 2008 Mar. PMID 18029348. Syntaxin 16 and syntaxin 5 are required for efficient retrograde transport of several exogenous and endogenous cargo proteins. Amessou M, et al. J Cell Sci, 2007 Apr 15. PMID 17389686. Identification of intrahepatic cholangiocarcinoma related genes by comparison with normal liver tissues using expressed sequence tags. Wang AG, et al. Biochem Biophys Res Commun, 2006 Jul 7. PMID 16712791.



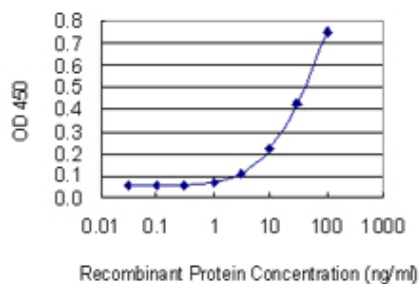
Antibody Reactive Against Recombinant Protein.Western Blot detection against Immunogen (36.74 KDa) .



Immunoperoxidase of monoclonal antibody to STX5A on formalin-fixed paraffin-embedded human cerebellum. [antibody concentration 3 ug/ml]



Immunofluorescence of monoclonal antibody to STX5A on A-431 cell. [antibody concentration 10 ug/ml]



Detection limit for recombinant GST tagged STX5 is 1 ng/ml as a capture antibody.

Please note: All products are 'FOR RESEARCH USE ONLY. NOT FOR USE IN DIAGNOSTIC OR THERAPEUTIC PROCEDURES'.