

SUGT1 Antibody (monoclonal) (M03)

Mouse monoclonal antibody raised against a partial recombinant SUGT1.

Catalog # AT4103a

Product Information

Application	WB, IF, E
Primary Accession	Q9Y2Z0
Other Accession	NM_006704
Reactivity	Human
Host	mouse
Clonality	monoclonal
Isotype	IgG3 Kappa
Clone Names	6G5
Calculated MW	41024

Additional Information

Gene ID	10910
Other Names	Suppressor of G2 allele of SKP1 homolog, Protein 40-6-3, Sgt1, SUGT1
Target/Specificity	SUGT1 (NP_006695, 151 a.a. ~ 260 a.a) partial recombinant protein with GST tag. MW of the GST tag alone is 26 KDa.
Dilution	WB~~1:500~1000 IF~~1:50~200 E~~N/A
Format	Clear, colorless solution in phosphate buffered saline, pH 7.2 .
Storage	Store at -20°C or lower. Aliquot to avoid repeated freezing and thawing.
Precautions	SUGT1 Antibody (monoclonal) (M03) is for research use only and not for use in diagnostic or therapeutic procedures.

Background

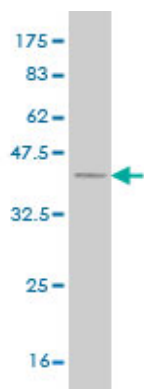
This gene is homologous to the yeast gene SGT1, which encodes a protein involved in kinetochore function and required for the G1/S and G2/M transitions. Complementation studies suggest that the human protein has similar functions. Two transcript variants encoding different isoforms have been found for this gene.

References

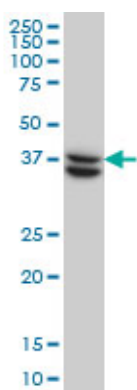
Hsp90-Sgt1 and Skp1 target human Mis12 complexes to ensure efficient formation of kinetochore-microtubule binding sites. Davies AE, et al. J Cell Biol, 2010 Apr 19. PMID 20404110. Defining the human deubiquitinating enzyme interaction landscape. Sowa ME, et al. Cell, 2009 Jul 23. PMID 19615732. Sgt1 dimerization is negatively regulated by protein kinase CK2-mediated phosphorylation at

Ser361. Bansal PK, et al. J Biol Chem, 2009 Jul 10. PMID 19398558. Sgt1 has co-chaperone properties and is up-regulated by heat shock. Zabka M, et al. Biochem Biophys Res Commun, 2008 May 23. PMID 18358234. Hsp70 is a new target of Sgt1--an interaction modulated by S100A6. Spiechowicz M, et al. Biochem Biophys Res Commun, 2007 Jun 15. PMID 17466273.

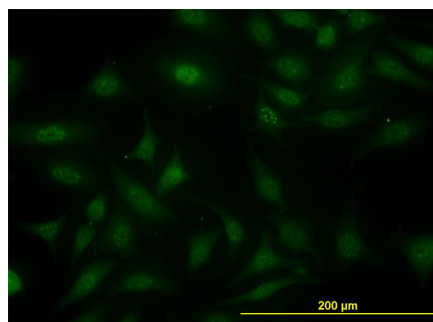
Images



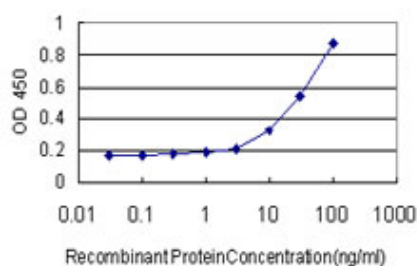
Antibody Reactive Against Recombinant Protein. Western Blot detection against Immunogen (37.84 KDa) .



SUGT1 monoclonal antibody (M03), clone 6G5 Western Blot analysis of SUGT1 expression in HeLa (Cat # AT4103a)



Immunofluorescence of monoclonal antibody to SUGT1 on HeLa cell. [antibody concentration 10 ug/ml]



Detection limit for recombinant GST tagged SUGT1 is approximately 3ng/ml as a capture antibody.

Please note: All products are 'FOR RESEARCH USE ONLY. NOT FOR USE IN DIAGNOSTIC OR THERAPEUTIC PROCEDURES'.