

SYT2 Antibody (monoclonal) (M01)

Mouse monoclonal antibody raised against a partial recombinant SYT2.

Catalog # AT4128a

Product Information

Application	WB, E
Primary Accession	Q8N9I0
Other Accession	NM_177402
Reactivity	Human
Host	mouse
Clonality	monoclonal
Isotype	IgG2a Kappa
Clone Names	1G10
Calculated MW	46872

Additional Information

Gene ID	127833
Other Names	Synaptotagmin-2, Synaptotagmin II, SytII, SYT2
Target/Specificity	SYT2 (NP_796376, 311 a.a. ~ 418 a.a) partial recombinant protein with GST tag. MW of the GST tag alone is 26 KDa.
Dilution	WB~~1:500~1000 E~~N/A
Format	Clear, colorless solution in phosphate buffered saline, pH 7.2 .
Storage	Store at -20°C or lower. Aliquot to avoid repeated freezing and thawing.
Precautions	SYT2 Antibody (monoclonal) (M01) is for research use only and not for use in diagnostic or therapeutic procedures.

Background

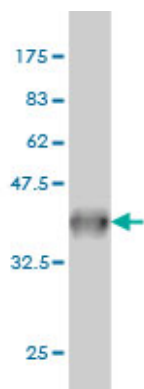
Synaptotagmins, like SYT2, are integral membrane proteins of synaptic vesicles thought to serve as Ca(2+) sensors in the process of vesicular trafficking and exocytosis (Hilbush and Morgan, 1994 [PubMed 8058779]).

References

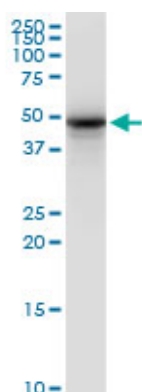
Synaptotagmin has an essential function in synaptic vesicle positioning for synchronous release in addition to its role as a calcium sensor. Young SM Jr, et al. Neuron, 2009 Aug 27. PMID 19709630. Human SCAMP5, a novel secretory carrier membrane protein, facilitates calcium-triggered cytokine secretion by interaction with SNARE machinery. Han C, et al. J Immunol, 2009 Mar 1. PMID 19234194. Zea mays annexins modulate cytosolic free Ca²⁺ and generate a Ca²⁺-permeable conductance. Laohavisit A, et al. Plant Cell, 2009 Feb.

PMID 19234085.Dominant antigenic peptides located at the heavy chain terminal of botulinum neurotoxin B contain receptor-binding sites for synaptotagmin II. Shi J, et al. Biochem Biophys Res Commun, 2008 Sep 19. PMID 18639519.Diversification of transcriptional modulation: large-scale identification and characterization of putative alternative promoters of human genes. Kimura K, et al. Genome Res, 2006 Jan. PMID 16344560.

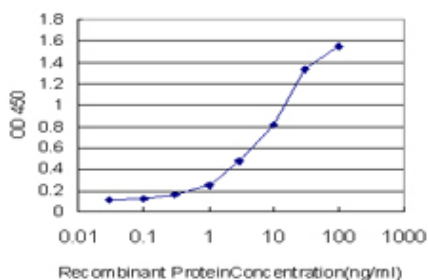
Images



Antibody Reactive Against Recombinant Protein.Western Blot detection against Immunogen (37.62 KDa) .



SYT2 monoclonal antibody (M01), clone 1G10. Western Blot analysis of SYT2 expression in human kidney.



Detection limit for recombinant GST tagged SYT2 is approximately 0.1ng/ml as a capture antibody.

Please note: All products are 'FOR RESEARCH USE ONLY. NOT FOR USE IN DIAGNOSTIC OR THERAPEUTIC PROCEDURES'.