

## TBL1X Antibody (monoclonal) (M07)

Mouse monoclonal antibody raised against a partial recombinant TBL1X.

Catalog # AT4162a

### Product Information

---

<b>Application</b>	IHC, E
<b>Primary Accession</b>	<a href="#">O60907</a>
<b>Other Accession</b>	<a href="#">NM_005647</a>
<b>Reactivity</b>	Human
<b>Host</b>	mouse
<b>Clonality</b>	monoclonal
<b>Isotype</b>	IgG2b Kappa
<b>Clone Names</b>	2B6
<b>Calculated MW</b>	62496

### Additional Information

---

<b>Gene ID</b>	6907
<b>Other Names</b>	F-box-like/WD repeat-containing protein TBL1X, SMAP55, Transducin beta-like protein 1X, Transducin-beta-like protein 1, X-linked, TBL1X, TBL1
<b>Target/Specificity</b>	TBL1X (NP_005638, 478 a.a. ~ 577 a.a) partial recombinant protein with GST tag. MW of the GST tag alone is 26 KDa.
<b>Dilution</b>	IHC~~1:100~500 E~~N/A
<b>Format</b>	Clear, colorless solution in phosphate buffered saline, pH 7.2 .
<b>Storage</b>	Store at -20°C or lower. Aliquot to avoid repeated freezing and thawing.
<b>Precautions</b>	TBL1X Antibody (monoclonal) (M07) is for research use only and not for use in diagnostic or therapeutic procedures.

### Background

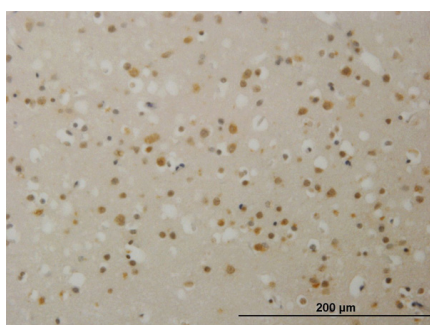
---

The protein encoded by this gene has sequence similarity with members of the WD40 repeat-containing protein family. The WD40 group is a large family of proteins, which appear to have a regulatory function. It is believed that the WD40 repeats mediate protein-protein interactions and members of the family are involved in signal transduction, RNA processing, gene regulation, vesicular trafficking, cytoskeletal assembly and may play a role in the control of cytotypic differentiation. This encoded protein is found as a subunit in corepressor SMRT (silencing mediator for retinoid and thyroid receptors) complex along with histone deacetylase 3 protein. This gene is located adjacent to the ocular albinism gene and it is thought to be involved in the pathogenesis of the ocular albinism with late-onset sensorineural deafness phenotype. Four transcript variants encoding two different isoforms have been found for this gene. This gene is highly similar to the Y chromosome TBL1Y gene.

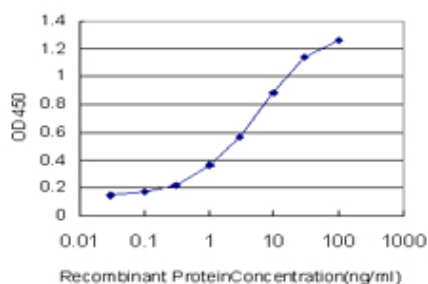
## References

TBL1 and TBLR1 phosphorylation on regulated gene promoters overcomes dual CtBP and NCoR/SMRT transcriptional repression checkpoints. Perissi V, et al. Mol Cell, 2008 Mar 28. PMID 18374649. Histone deacetylase 3 localizes to the mitotic spindle and is required for kinetochore-microtubule attachment. Ishii S, et al. Proc Natl Acad Sci U S A, 2008 Mar 18. PMID 18326024. TBL1-TBLR1 and beta-catenin recruit each other to Wnt target-gene promoter for transcription activation and oncogenesis. Li J, et al. Nat Cell Biol, 2008 Feb. PMID 18193033. Novel functional features of the Lis-H domain: role in protein dimerization, half-life and cellular localization. Gerlitz G, et al. Cell Cycle, 2005 Nov. PMID 16258276. Reading and function of a histone code involved in targeting corepressor complexes for repression. Yoon HG, et al. Mol Cell Biol, 2005 Jan. PMID 15601853.

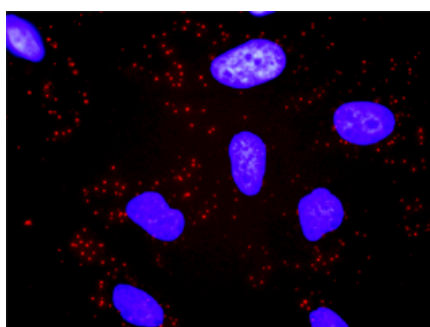
## Images



Immunoperoxidase of monoclonal antibody to TBL1X on formalin-fixed paraffin-embedded human cerebral cortex. [antibody concentration 1.5 ug/ml]



Detection limit for recombinant GST tagged TBL1X is approximately 0.3ng/ml as a capture antibody.



Proximity Ligation Analysis of protein-protein interactions between CACYBP and TBL1X. HeLa cells were stained with anti-CACYBP rabbit purified polyclonal 1:1200 and anti-TBL1X mouse monoclonal antibody 1:50. Each red dot represents the detection of protein-protein interaction complex, and nuclei were counterstained with DAPI (blue).

Please note: All products are 'FOR RESEARCH USE ONLY. NOT FOR USE IN DIAGNOSTIC OR THERAPEUTIC PROCEDURES'.