

## TBX2 Antibody (monoclonal) (M01)

Mouse monoclonal antibody raised against a partial recombinant TBX2.

Catalog # AT4166a

### Product Information

---

|                          |                           |
|--------------------------|---------------------------|
| <b>Application</b>       | WB, IF, E                 |
| <b>Primary Accession</b> | <a href="#">Q13207</a>    |
| <b>Other Accession</b>   | <a href="#">NM_005994</a> |
| <b>Reactivity</b>        | Human                     |
| <b>Host</b>              | mouse                     |
| <b>Clonality</b>         | monoclonal                |
| <b>Isotype</b>           | IgG3 Kappa                |
| <b>Clone Names</b>       | 7G5                       |
| <b>Calculated MW</b>     | 75066                     |

### Additional Information

---

|                           |  |
|---------------------------|--|
| <b>Gene ID</b>            | 6909   |
| <b>Other Names</b>        | T-box transcription factor TBX2, T-box protein 2, TBX2   |
| <b>Target/Specificity</b> | TBX2 (NP_005985, 603 a.a. ~ 702 a.a) partial recombinant protein with GST tag. MW of the GST tag alone is 26 KDa.  |
| <b>Dilution</b>           | WB~~1:500~1000 IF~~1:50~200 E~~N/A   |
| <b>Format</b>             | Clear, colorless solution in phosphate buffered saline, pH 7.2 .   |
| <b>Storage</b>            | Store at -20°C or lower. Aliquot to avoid repeated freezing and thawing.   |
| <b>Precautions</b>        | TBX2 Antibody (monoclonal) (M01) is for research use only and not for use in diagnostic or therapeutic procedures. |

### Background

---

This gene is a member of a phylogenetically conserved family of genes that share a common DNA-binding domain, the T-box. T-box genes encode transcription factors involved in the regulation of developmental processes. This gene product is the human homolog of mouse Tbx2, and shares strong sequence similarity with Drosophila omb protein. Expression studies indicate that this gene may have a potential role in tumorigenesis as an immortalizing agent. Transcript heterogeneity due to alternative polyadenylation has been noted for this gene.

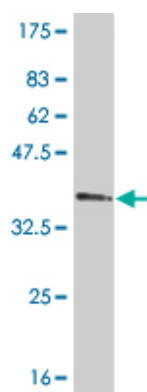
### References

---

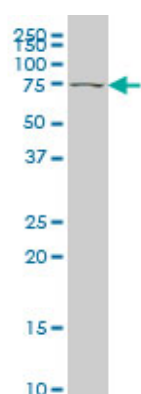
The role of height-associated loci identified in genome wide association studies in the determination of

pediatric stature. Zhao J, et al. BMC Med Genet, 2010 Jun 14. PMID 20546612. Expression of PSCA, PIWIL1, and TBX2 in endometrial adenocarcinoma. Liu WK, et al. Onkologie, 2010. PMID 20502058. The T-box transcription factor Tbx2: its role in development and possible implication in cancer. Abrahams A, et al. IUBMB Life, 2010 Feb. PMID 19960541. Identification of 15 loci influencing height in a Korean population. Kim JJ, et al. J Hum Genet, 2010 Jan. PMID 19893584. Phosphorylation of histone H3 by protein kinase C signaling plays a critical role in the regulation of the developmentally important TBX2 gene. Teng H, et al. J Biol Chem, 2009 Sep 25. PMID 19633291.

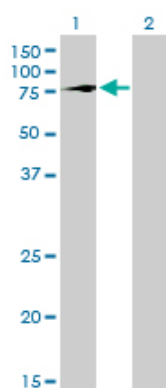
## Images



Antibody Reactive Against Recombinant Protein. Western Blot detection against Immunogen (36.74 KDa) .

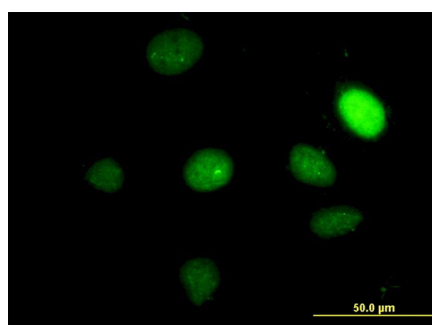


TBX2 monoclonal antibody (M01), clone 7G5 Western Blot analysis of TBX2 expression in HeLa S3 NE ( Cat # AT4166a )

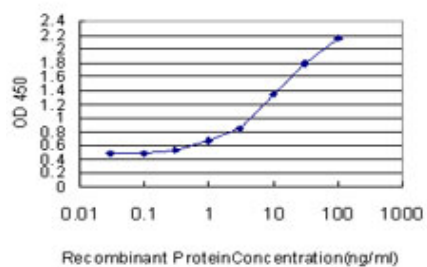


Western Blot analysis of TBX2 expression in transfected 293T cell line by TBX2 monoclonal antibody (M01), clone 7G5.

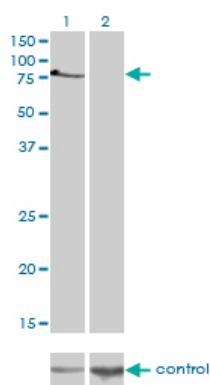
Lane 1: TBX2 transfected lysate(74.1 KDa).  
Lane 2: Non-transfected lysate.



Immunofluorescence of monoclonal antibody to TBX2 on HeLa cell. [antibody concentration 30 ug/ml]



Detection limit for recombinant GST tagged TBX2 is approximately 0.3ng/ml as a capture antibody.



Western blot analysis of TBX2 over-expressed 293 cell line, cotransfected with TBX2 Validated Chimera RNAi (Cat # AT4166a )

Please note: All products are 'FOR RESEARCH USE ONLY. NOT FOR USE IN DIAGNOSTIC OR THERAPEUTIC PROCEDURES'.