

## TBX6 Antibody (monoclonal) (M08)

Mouse monoclonal antibody raised against a partial recombinant TBX6.

Catalog # AT4173a

### Product Information

---

|                          |                           |
|--------------------------|---------------------------|
| <b>Application</b>       | E                         |
| <b>Primary Accession</b> | <a href="#">O95947</a>    |
| <b>Other Accession</b>   | <a href="#">NM_004608</a> |
| <b>Reactivity</b>        | Human                     |
| <b>Host</b>              | mouse                     |
| <b>Clonality</b>         | monoclonal                |
| <b>Isotype</b>           | IgG2a Kappa               |
| <b>Clone Names</b>       | 3G9                       |
| <b>Calculated MW</b>     | 47045                     |

### Additional Information

---

|                           |  |
|---------------------------|--|
| <b>Gene ID</b>            | 6911   |
| <b>Other Names</b>        | T-box transcription factor TBX6, T-box protein 6, TBX6   |
| <b>Target/Specificity</b> | TBX6 (NP_004599, 191 a.a. ~ 299 a.a) partial recombinant protein with GST tag. MW of the GST tag alone is 26 KDa.  |
| <b>Dilution</b>           | E~~N/A   |
| <b>Format</b>             | Clear, colorless solution in phosphate buffered saline, pH 7.2 .   |
| <b>Storage</b>            | Store at -20°C or lower. Aliquot to avoid repeated freezing and thawing.   |
| <b>Precautions</b>        | TBX6 Antibody (monoclonal) (M08) is for research use only and not for use in diagnostic or therapeutic procedures. |

### Background

---

This gene is a member of a phylogenetically conserved family of genes that share a common DNA-binding domain, the T-box. T-box genes encode transcription factors involved in the regulation of developmental processes. Knockout studies in mice indicate that this gene is important for specification of paraxial mesoderm structures.

### References

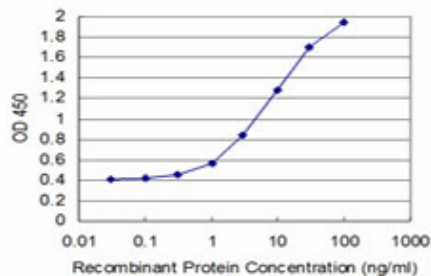
---

The association analysis of TBX6 polymorphism with susceptibility to congenital scoliosis in a Chinese Han population. Fei Q, et al. Spine (Phila Pa 1976), 2010 Apr 20. PMID 20228709. A missense T (Brachyury) mutation contributes to vertebral malformations. Ghebranious N, et al. J Bone Miner Res, 2008 Oct. PMID

18466071. Transcriptional repression by the T-box proteins Tbx18 and Tbx15 depends on Groucho corepressors. Farin HF, et al. J Biol Chem, 2007 Aug 31. PMID 17584735. The status, quality, and expansion of the NIH full-length cDNA project: the Mammalian Gene Collection (MGC). Gerhard DS, et al. Genome Res, 2004 Oct. PMID 15489334. Complete sequencing and characterization of 21,243 full-length human cDNAs. Ota T, et al. Nat Genet, 2004 Jan. PMID 14702039.

## Images

---



Detection limit for recombinant GST tagged TBX6 is approximately 0.3ng/ml as a capture antibody.

Please note: All products are 'FOR RESEARCH USE ONLY. NOT FOR USE IN DIAGNOSTIC OR THERAPEUTIC PROCEDURES'.