

# TCF7L2 Antibody (monoclonal) (M03)

Mouse monoclonal antibody raised against a partial recombinant TCF7L2.

Catalog # AT4190a

## Product Information

---

<b>Application</b>	WB, IF, E
<b>Primary Accession</b>	<a href="#">Q9NQB0</a>
<b>Other Accession</b>	<a href="#">NM_030756</a>
<b>Reactivity</b>	Human
<b>Host</b>	mouse
<b>Clonality</b>	monoclonal
<b>Isotype</b>	IgG1 Kappa
<b>Clone Names</b>	3D7
<b>Calculated MW</b>	67919

## Additional Information

---

<b>Gene ID</b>	6934
<b>Other Names</b>	Transcription factor 7-like 2, HMG box transcription factor 4, T-cell-specific transcription factor 4, T-cell factor 4, TCF-4, hTCF-4, TCF7L2, TCF4
<b>Target/Specificity</b>	TCF7L2 (NP_110383, 490 a.a. ~ 596 a.a) partial recombinant protein with GST tag. MW of the GST tag alone is 26 KDa.
<b>Dilution</b>	WB~~1:500~1000 IF~~1:50~200 E~~N/A
<b>Format</b>	Clear, colorless solution in phosphate buffered saline, pH 7.2 .
<b>Storage</b>	Store at -20°C or lower. Aliquot to avoid repeated freezing and thawing.
<b>Precautions</b>	TCF7L2 Antibody (monoclonal) (M03) is for research use only and not for use in diagnostic or therapeutic procedures.

## Background

---

This gene encodes a high mobility group (HMG) box-containing transcription factor that plays a key role in the Wnt signaling pathway. The protein has been implicated in blood glucose homeostasis. Genetic variants of this gene are associated with increased risk of type 2 diabetes.

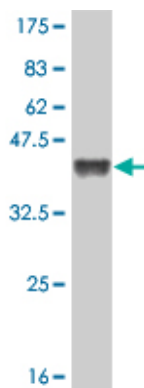
## References

---

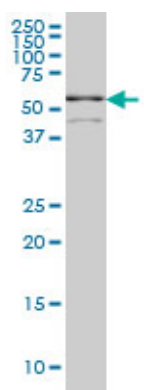
Glycemia determines the effect of type 2 diabetes risk genes on insulin secretion. Heni M, et al. Diabetes, 2010 Aug 29. PMID 20802253. Role of BMI in the Association of the TCF7L2 rs7903146 Variant with Coronary Heart Disease: The Atherosclerosis Risk in Communities (ARIC) Study. Kucharska-Newton AM, et al. J Obes,

2010. PMID 20798759. Hyperglycemia and Adverse Pregnancy Outcome (HAPO) Study: common genetic variants in GSK and TCF7L2 are associated with fasting and post-challenge glucose levels in pregnancy and with the new consensus definition of gestational diabetes from the International Association of Diabetes and Pregnancy Study Groups. Freathy RM, et al. Diabetes, 2010 Aug 3. PMID 20682688. The balance of TCF7L2 variants with differential activities in Wnt-signaling is regulated by lithium in a GSK3 $\beta$ -independent manner. Struwing I, et al. Biochem Biophys Res Commun, 2010 Aug 20. PMID 20654575. Potential role of TCF7L2 gene variants on cardiac sympathetic/parasympathetic activity. Boccardi V, et al. Eur J Hum Genet, 2010 Jul 21. PMID 20648057.

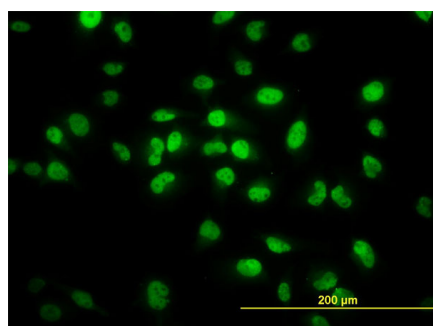
## Images



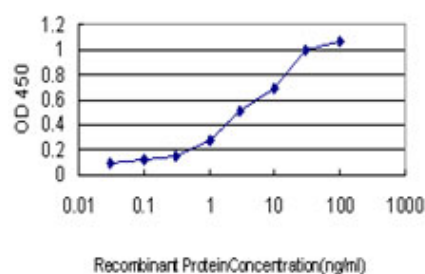
Antibody Reactive Against Recombinant Protein. Western Blot detection against Immunogen (37.51 KDa) .



TCF7L2 monoclonal antibody (M03), clone 3D7 Western Blot analysis of TCF7L2 expression in K-562 (Cat # AT4190a )



Immunofluorescence of monoclonal antibody to TCF7L2 on HeLa cell. [antibody concentration 40  $\mu$ g/ml]



Detection limit for recombinant GST tagged TCF7L2 is approximately 0.1 ng/ml as a capture antibody.

Please note: All products are 'FOR RESEARCH USE ONLY. NOT FOR USE IN DIAGNOSTIC OR THERAPEUTIC PROCEDURES'.